

January 2008

# The 2007 Health Outcomes Survey- Modified (HOS-M) Results

## Final Tables and Figures

Prepared for

**Louis Johnson**  
Project Officers  
Centers for Medicare & Medicaid Services  
7500 Security Boulevard, S2-24-25  
Baltimore, MD 21244-1850

Prepared by

**Galina Khatutsky**  
**Edith G. Walsh**  
RTI International  
1440 Main Street, Suite 310  
Waltham, MA 02451-1623

RTI Project Number 0209853.002.012.004



**THE 2007 HEALTH OUTCOMES SURVEY-MODIFIED (HOS-M) RESULTS**  
**FINAL DRAFT TABLES AND FIGURES**

by Galina Khatutsky  
Edith G. Walsh

Federal Project Officer: Louis Johnson

RTI International\*

CMS Contract No. HHSM-500-2005-0029I, TO 0002

January 2008

These projects were funded by the Centers for Medicare & Medicaid Services under contract no. HHSM-500-2005-0029I, TO 0002. The statements contained in this report are solely those of the authors and do not necessarily reflect the views or policies of the Centers for Medicare & Medicaid Services. RTI assumes responsibility for the accuracy and completeness of the information contained in this project.

---

\*RTI International is a trade name of Research Triangle Institute.

## LIST OF TABLES

Table 1	2007 HOS-M: Response rates by plan
Table 2	Comparison of response rates for 2007, 2006 and 2005 HOS-M and 2004 and 2003 PHS
Table 3	2007 HOS-M: Sample distribution by plan
Table 4	2007 HOS-M: Demographic characteristics of respondents by plan
Table 5	2007 HOS-M: Survey mode by plan
Table 6	2007 HOS-M: Functional status by plan proportion
Table 7	2007 HOS-M: Functional status by plan (frequencies)
Table 8	2007 and 2006 HOS-M: Comparison of functional status (proportions)
Table 9	2007 HOS-M: Functional status by plan and 2006 Medicaid status (proportions)
Table 10	2007 HOS-M: Functional status by plan and 2006 Medicaid status (frequencies)
Table 11	2007 HOS-M: Functional status by plan and 2007 Medicaid status (proportions)
Table 12	2007 HOS-M: Functional status by plan and 2007 Medicaid status (frequencies)
Table 13	2007 HOS-M: ADL impairment by plan
Table 14	2007 HOS-M: ADL counts by plan
Table 15	2007 HOS-M: VR-12 Physical (PCS) and Mental (MCS) Component mean unadjusted scores by plan
Table 16	2007 HOS-M: Respondent type by plan
Table 17	2007 HOS-M: Survey language and language-related proxy information
Table 18	2007 HOS-M: Reasons for proxy respondents by plan
Table 19	2007 HOS-M: Type of help provided by proxy respondents by plan
Table 20	2007 HOS-M: Type of professional proxy respondent
Table 21	2007 HOS-M: Reported memory loss by respondent type by plan
Table 22	2007 HOS-M: Incontinence rates of respondents by plan

## LIST OF FIGURES

- Figure 1 2007 HOS-M: Response Rates by Plan
- Figure 2 2007 HOS-M: Mean Unadjusted VR Physical Component Scores (PCS) by Plan
- Figure 3 2007 HOS-M: Mean Unadjusted VR Mental Component Scores (MCS) by Plan
- Figure 4 2007 HOS-M: ADL Limitations: Difficulty Bathing by Plan
- Figure 5 2007 HOS-M: ADL Limitations: Difficulty Dressing by Plan
- Figure 6 2007 HOS-M: ADL Limitations: Difficulty Walking by Plan
- Figure 7 2007 HOS-M: ADL Limitations: Difficulty Transferring by Plan
- Figure 8 2007 HOS-M: ADL Limitations: Difficulty Toileting by Plan
- Figure 9 2007 HOS-M: ADL Limitations: Difficulty Eating by Plan

**Table 1**  
**2007 HOS-M: Response rates by plan**

Plan type	Plan name	# of eligibles	# of respondents <sup>1</sup>	Response rate %
TOTAL SAMPLE		20,821	15,161	72.8
SAMPLED PLANS <sup>2</sup>		8,944	6,572	73.5
PLANS USING REGULAR SURVEY PROCEDURES (CONTACT FILES)				
PACE TOTAL		9,348	6,734	72.0
DUAL ELIGIBLE DEMOS TOTAL		7,444	5,399	72.5
MSHO/MnDHO TOTAL		1,366	1,047	76.6
WPP TOTAL		2,663	1,981	74.4
SCO TOTAL		11,473	8,427	73.5
PACE	Plan A	262	191	72.9
PACE	Plan B	810	527	65.1
PACE	Plan C	101	70	69.3
PACE	Plan D	121	95	78.5
PACE	Plan E	92	59	64.1
PACE	Plan F	156	95	60.9
PACE	Plan G	246	210	85.4
PACE	Plan H	110	61	55.5
PACE	Plan I	101	49	48.5
PACE	Plan J	332	231	69.6
PACE	Plan K	222	166	74.8
SCO	Plan L <sup>2</sup>	894	683	76.4
SCO	Plan M	741	531	71.7
SCO	Plan N <sup>2</sup>	1,028	767	74.6
PACE	Plan O	130	74	56.9
MSHO/MnDHO	Plan P	77	51	66.2
MSHO/MnDHO	Plan Q <sup>2</sup>	933	731	78.3
MSHO/MnDHO	Plan R	290	203	70.0
MSHO/MnDHO	Plan S <sup>2</sup>	986	762	77.3
MSHO/MnDHO	Plan T <sup>2</sup>	983	598	60.8
MSHO/MnDHO	Plan U	486	378	77.8
MSHO/MnDHO	Plan V <sup>2</sup>	1,074	826	76.9
MSHO/MnDHO	Plan W <sup>2</sup>	1,014	716	70.6
MSHO/MnDHO	Plan X	544	355	65.3
MSHO/MnDHO	Plan Y <sup>2</sup>	1,057	779	73.7
PACE	Plan Z	110	81	73.6
PACE	Plan AA	271	204	75.3
PACE	Plan BB	55	36	65.5
PACE	Plan CC <sup>2</sup>	975	710	72.8
PACE	Plan DD	215	146	67.9
PACE	Plan EE	176	124	70.5
PACE	Plan FF	238	182	76.5
PACE	Plan GG	555	397	71.5
PACE	Plan HH	202	143	70.8

(continued)

**Table 1 (continued)**  
**2007 HOS-M: Response rates by plan**

Plan type	Plan name	# of eligibles	# of respondents <sup>1</sup>	Response rate %
PACE	Plan II	181	110	60.8
PACE	Plan JJ	203	166	81.8
PACE	Plan KK	87	46	52.9
PACE	Plan LL	49	42	85.7
PACE	Plan MM	245	156	63.7
PACE	Plan NN	195	136	69.7
PACE	Plan OO	106	90	84.9
PACE	Plan PP	602	454	75.4
PACE	Plan QQ	167	121	72.5
WPP	Plan RR	86	67	77.9
WPP	Plan SS	650	515	79.2
WPP	Plan TT	170	116	68.2
WPP	Plan UU	460	349	75.9
PACE	Plan VV	580	423	72.9
PACE	Plan WW	227	145	63.9
PACE	Plan XX	811	682	84.1
PACE	Plan YY	280	217	77.5
PACE	Plan ZZ	135	95	70.4

NOTES:

<sup>1</sup> Respondents are defined as eligibles who completed all 6 ADL questions (items 4a-4f).

<sup>2</sup> Sampled plans, where contact information was not collected.

SOURCE: RTI analysis of the 2007 HOS-M survey.

Computer Output: hosm2007\_02.xls

**Table 2**  
**Comparison of response rates<sup>1</sup> for 2007, 2006 and 2005 HOS-M and 2004 and 2003 PHS<sup>3</sup>**

Plan type	Plan name	2007 HOS-M	2006 HOS-M	2005 HOS-M	2004 PHS	2003 PHS
		Response rate	Response rate	Response rate	Response rate	Response rate
		%	%	%	%	%
PACE TOTAL		72.0	72.2	77.3	74.8	76.0
DUAL ELIGIBLE DEMOS TOTAL		72.5	72.7	79.2	75.0	78.4
MSHO/MnDHO TOTAL		76.6	68.9	74.5	73.2	75.8
WPP TOTAL		74.4	80.7	85.0	78.5	82.9
SCO TOTAL		73.5	77.9	84.7	—	—
PACE	Plan A	72.9	71.7	78.6	79.0	72.0
PACE	Plan B	65.1	67.2	72.9	69.7	73.4
PACE	Plan C	69.3	72.3	71.2	—	—
PACE	Plan D	78.5	82.0	82.1	78.7	—
PACE	Plan E	64.1	70.1	76.4	76.3	76.6
PACE	Plan F	60.9	73.7	69.1	66.0	64.9
PACE	Plan G	85.4	79.1	96.7	90.1	92.6
PACE	Plan H	55.5	56.1	71.4	56.2	64.4
PACE	Plan I	48.5	60.6	72.1	61.3	54.1
PACE	Plan J	69.6	77.6	74.5	—	—
PACE	Plan K	74.8	50.2	76.1	63.1	67.8
SCO	Plan L	76.4	78.8	75.8	—	—
SCO	Plan M	71.7	72.7	80.7	—	—
SCO	Plan N	74.6	79.2	88.5	—	—
PACE	Plan O	56.9	58.7	62.3	63.1	65.7
MSHO/MnDHO	Plan P	66.2	78.7	75.7	90.3	75.3
MSHO/MnDHO	Plan Q	78.3	72.9	—	—	—
MSHO/MnDHO	Plan R	70.0	73.8	—	—	—
MSHO/MnDHO	Plan S	77.3	72.7	—	—	—
MSHO/MnDHO	Plan T	60.8	60.3	—	—	—
MSHO/MnDHO	Plan U	77.8	78.2	—	—	—
MSHO/MnDHO	Plan V	76.9	70.5	—	—	—
MSHO/MnDHO	Plan W	70.6	64.1	79.0	74.6	74.8
MSHO/MnDHO	Plan X	65.3	—	70.9	78.1	75.7
MSHO/MnDHO	Plan Y	73.7	65.9	70.1	68.3	78.1
PACE	Plan Z	73.6	86.2	84.5	92.0	83.1
PACE	Plan AA	75.3	74.3	73.3	81.9	69.5
PACE	Plan BB	65.5	71.7	73.2	85.3	73.2
PACE	Plan CC	72.8	73.4	77.2	73.0	74.5
PACE	Plan DD	67.9	71.0	72.7	65.3	70.9
PACE	Plan EE	70.5	66.0	76.4	73.5	74.8
PACE	Plan FF	76.5	71.7	71.9	77.1	79.3
PACE	Plan GG	71.5	71.4	79.1	76.1	76.6
PACE	Plan HH	70.8	65.3	78.0	66.9	75.8
PACE	Plan II	60.8	74.5	—	—	—
PACE	Plan JJ	81.8	—	—	—	—
PACE	Plan KK	52.9	—	—	—	—
PACE	Plan LL	85.7	—	—	—	—
PACE	Plan MM	63.7	63.4	72.9	74.0	76.6
PACE	Plan NN	69.7	68.0	77.1	84.3	88.3
PACE	Plan OO	84.9	80.8	—	—	—
PACE	Plan PP	75.4	77.8	84.0	81.4	85.4
PACE	Plan QQ	72.5	73.3	71.9	78.7	87.8
WPP	Plan RR	77.9	70.5	72.5	67.9	77.0
WPP	Plan SS	79.2	86.5	90.9	87.5	84.0
WPP	Plan TT	68.2	69.1	77.3	69.3	79.4
WPP	Plan UU	75.9	80.9	85.3	77.6	86.6
PACE	Plan VV	72.9	77.2	81.7	75.6	79.7
PACE	Plan WW	63.9	61.2	—	—	—
PACE	Plan XX	84.1	80.8	82.3	77.0	78.8
PACE	Plan YY	77.5	76.4	79.3	79.8	61.3
PACE	Plan ZZ	70.4	78.9	71.8	70.3	76.6

NOTES:

Some plans did not participate in earlier survey years.

<sup>1</sup> Respondents are defined as eligibles who completed all 6 ADL questions (items 4a-4f).

<sup>2</sup> Sampled plans, where contact information was not collected.

<sup>3</sup> PHS was renamed HOS-M in 2005.

SOURCE: RTI analysis of the 2007, 2006 and 2005 HOS-M and the 2003 and 2004 PHS survey data.

**Table 3**  
**2007 HOS-M: Sample distribution by plan**

Plan type	Plan name	Initial sample frame	Survey eligibles	Survey respondents	Completed all ADL survey questions	Completed all questions for VR-12 PCS and MCS scores	Payment <sup>1,2</sup> sample	Institutionalized <sup>4</sup>
TOTAL SAMPLE		23,682	20,821	16,408	15,161	12,857	14,877	620
PACE TOTAL		10,533	9,348	7,307	6,734	5,651	6,651	180
DUAL ELIGIBLE DEMOS TOTAL		13,149	11,473	9,101	8,427	7,206	8,226	440
MSHO/MnDHO TOTAL		8,397	7,444	5,807	5,399	4,692	5,224	388
WPP TOTAL		1,484	1,366	1,126	1,047	894	1,031	25
SCO TOTAL		3,268	2,663	2,168	1,981	1,620	1,971	27
PACE	Plan A	290	262	210	191	166	191	2
PACE	Plan B	902	810	587	527	445	509	28
PACE	Plan C	106	101	76	70	52	69	1
PACE	Plan D	136	121	103	95	79	95	1
PACE	Plan E	109	92	64	59	51	57	7
PACE	Plan F	174	156	100	95	79	95	3
PACE	Plan G	272	246	217	210	177	207	10
PACE	Plan H	125	110	76	61	51	60	3
PACE	Plan I	115	101	61	49	37	49	1
PACE	Plan J	382	332	250	231	200	207	45
PACE	Plan K	247	222	185	166	127	166	3
SCO	Plan L <sup>3</sup>	1,200	894	733	683	587	680	11
SCO	Plan M	868	741	595	531	426	526	10
SCO	Plan N <sup>3</sup>	1,200	1,028	840	767	607	765	6
PACE	Plan O	146	130	79	74	56	74	0
MSHO/MnDHO	Plan P	82	77	54	51	43	50	1
MSHO/MnDHO	Plan Q <sup>3</sup>	1,020	933	788	731	653	725	11
MSHO/MnDHO	Plan R	312	290	221	203	174	202	1
MSHO/MnDHO	Plan S <sup>3</sup>	1,059	986	817	762	667	760	13
MSHO/MnDHO	Plan T <sup>3</sup>	1,200	983	649	598	516	492	236
MSHO/MnDHO	Plan U	514	486	397	378	324	374	8
MSHO/MnDHO	Plan V <sup>3</sup>	1,200	1,074	885	826	729	788	73
MSHO/MnDHO	Plan W <sup>3</sup>	1,200	1,014	778	716	631	714	4
MSHO/MnDHO	Plan X	610	544	384	355	292	354	4
MSHO/MnDHO	Plan Y <sup>3</sup>	1,200	1,057	834	779	663	765	37

(continued)



**Table 3 (continued)**  
**2007 HOS-M: Sample distribution by plan**

Plan type	Plan name	Initial sample frame	Survey eligibles	Survey respondents	Completed all ADL survey questions	Completed all questions for VR-12 PCS and MCS scores	Payment <sup>1,2</sup> sample	Institutionalized <sup>4</sup>
PACE	Plan Z	131	110	89	81	78	81	0
PACE	Plan AA	298	271	217	204	181	201	4
PACE	Plan BB	63	55	41	36	26	36	0
PACE	Plan CC <sup>3</sup>	1,200	975	773	710	590	710	5
PACE	Plan DD	249	215	166	146	119	146	1
PACE	Plan EE	198	176	138	124	103	124	0
PACE	Plan FF	264	238	192	182	142	182	0
PACE	Plan GG	625	555	439	397	326	397	1
PACE	Plan HH	224	202	158	143	112	143	2
PACE	Plan II	206	181	118	110	101	108	3
PACE	Plan JJ	227	203	172	166	136	165	3
PACE	Plan KK	97	87	59	46	42	45	1
PACE	Plan LL	56	49	44	42	32	41	2
PACE	Plan MM	282	245	166	156	124	154	4
PACE	Plan NN	228	195	152	136	109	136	4
PACE	Plan OO	116	106	96	90	80	89	1
PACE	Plan PP	665	602	486	454	361	444	19
PACE	Plan QQ	175	167	128	121	113	121	2
WPP	Plan RR	92	86	70	67	64	67	0
WPP	Plan SS	704	650	549	515	440	506	15
WPP	Plan TT	187	170	127	116	94	114	3
WPP	Plan UU	501	460	380	349	296	344	7
PACE	Plan VV	625	580	454	423	338	420	5
PACE	Plan WW	255	227	161	145	118	143	6
PACE	Plan XX	884	811	703	682	617	678	7
PACE	Plan YY	306	280	236	217	193	215	4
PACE	Plan ZZ	155	135	111	95	90	93	2

NOTES:

<sup>1</sup> Payment sample includes community-residing non-ESRD respondents aged 55+ who completed all 6 ADL questions.

<sup>2</sup> SCO participants are aged 65+.

<sup>3</sup> Sampled plans, where contact information was not collected.

<sup>4</sup> Institutionalized enrollees are not eligible for HOS-M and are dropped from the sample

SOURCE: RTI analysis of the 2007 HOS-M survey.

Computer Output: hosm2007\_03.xls

**Table 4**  
**2007 HOS-M: Demographic characteristics of respondents<sup>1</sup> by plan**  
**Community-residing non-ESRD respondents aged 55+<sup>2</sup>**

Plan type	Plan name	Mean age			Race								Gender	
		Total	Male	Female	White	Black	Other	Asian	Hispanic	North American Native	Unknown	Male	Female	
					%	%	%	%	%	%	%	%	%	
TOTAL SAMPLE		77.8	75.5	78.6	67.1	15.0	2.6	7.5	7.1	0.5	0.2	25.9	74.1	
PACE TOTAL		79.2	76.5	80.2	54.3	23.3	2.4	10.2	9.4	0.3	0.2	25.0	75.0	
DUAL ELIGIBLE DEMOS TOTAL		76.6	74.8	77.3	77.4	8.3	2.8	5.3	5.3	0.7	0.2	26.7	73.3	
MSHO/MnDHO TOTAL		77.3	75.2	78.0	85.2	5.2	1.9	6.0	0.7	0.9	0.1	25.7	74.3	
WPP TOTAL		75.7	73.9	76.4	86.9	9.6	0.3	1.6	1.0	0.4	0.3	27.5	72.5	
SCO TOTAL		75.2	74.2	75.6	52.0	15.8	6.4	5.4	19.7	0.1	0.5	28.7	71.3	
PACE	Plan A	74.6	72.8	75.6	49.2	0.0	1.0	1.6	47.6	0.5	0.0	34.6	65.4	
PACE	Plan B	79.8	76.3	80.9	83.3	7.7	0.8	0.4	6.7	0.8	0.4	24.8	75.2	
PACE	Plan C	80.5	78.3	80.9	29.0	59.4	0.0	1.4	10.1	0.0	0.0	17.4	82.6	
PACE	Plan D	74.2	72.3	74.8	80.0	17.9	0.0	0.0	2.1	0.0	0.0	23.2	76.8	
PACE	Plan E	79.2	75.9	79.8	35.1	61.4	0.0	0.0	3.5	0.0	0.0	15.8	84.2	
PACE	Plan F	83.4	79.5	84.5	78.9	13.7	4.2	3.2	0.0	0.0	0.0	23.2	76.8	
PACE	Plan G	81.5	80.3	81.9	96.6	2.4	0.0	1.0	0.0	0.0	0.0	24.6	75.4	
PACE	Plan H	81.4	76.5	82.8	36.7	45.0	5.0	0.0	10.0	0.0	3.3	21.7	78.3	
PACE	Plan I	80.9	80.1	81.1	67.3	24.5	2.0	0.0	6.1	0.0	0.0	18.4	81.6	
PACE	Plan J	75.0	71.7	76.2	71.5	9.7	0.5	2.9	15.0	0.0	0.5	26.6	73.4	
PACE	Plan K	80.7	77.6	81.6	92.8	1.2	0.6	0.0	4.8	0.6	0.0	22.3	77.7	
SCO	Plan L <sup>3</sup>	75.7	74.5	76.1	64.4	18.1	6.0	5.9	5.1	0.1	0.3	26.3	73.7	
SCO	Plan M	75.4	74.6	75.8	49.4	19.8	6.8	1.5	21.7	0.2	0.6	28.7	71.3	
SCO	Plan N <sup>3</sup>	74.6	73.7	75.0	42.7	11.0	6.5	7.7	31.4	0.0	0.7	30.8	69.2	
PACE	Plan O	82.1	78.9	82.9	2.7	95.9	0.0	1.4	0.0	0.0	0.0	18.9	81.1	
MSHO/MnDHO	Plan P	60.1	60.9	59.6	90.0	6.0	0.0	4.0	0.0	0.0	0.0	34.0	66.0	
MSHO/MnDHO	Plan Q <sup>3</sup>	78.9	77.0	79.5	98.2	0.3	0.7	0.1	0.0	0.4	0.3	22.8	77.2	
MSHO/MnDHO	Plan R	77.5	74.3	78.4	94.1	0.0	1.5	0.0	0.5	4.0	0.0	23.3	76.7	
MSHO/MnDHO	Plan S <sup>3</sup>	78.2	75.6	79.3	97.6	0.3	0.5	0.7	0.7	0.3	0.0	28.4	71.6	
MSHO/MnDHO	Plan T <sup>3</sup>	75.6	74.6	76.0	55.5	13.2	4.7	24.4	1.0	1.0	0.2	27.8	72.2	
MSHO/MnDHO	Plan U	77.7	74.2	78.6	97.9	0.0	0.3	0.0	0.0	1.9	0.0	21.1	78.9	
MSHO/MnDHO	Plan V <sup>3</sup>	78.4	76.1	79.1	94.5	0.4	0.5	3.4	0.9	0.3	0.0	24.2	75.8	
MSHO/MnDHO	Plan W <sup>3</sup>	77.3	75.9	77.8	82.2	4.5	2.7	9.9	0.3	0.4	0.0	25.5	74.5	
MSHO/MnDHO	Plan X	74.3	73.3	74.9	46.6	34.7	4.2	10.5	1.7	2.3	0.0	37.0	63.0	
MSHO/MnDHO	Plan Y <sup>3</sup>	77.1	75.0	77.8	81.6	5.8	3.0	6.9	1.3	1.3	0.1	23.5	76.5	

(continued)

**Table 4 (continued)**  
**2007 HOS-M: Demographic characteristics of respondents<sup>1</sup> by plan**  
**Community-residing non-ESRD respondents aged 55+<sup>2</sup>**

Plan type	Plan name	Mean age			Race							Gender		
		Total	Male	Female	White	Black	Other	Asian	Hispanic	North American Native	Unknown	Male	Female	
					%	%	%	%	%	%	%	%	%	
PACE	Plan Z	76.9	73.6	77.6	30.9	69.1	0.0	0.0	0.0	0.0	0.0	0.0	17.3	82.7
PACE	Plan AA	83.4	80.4	83.9	96.0	3.5	0.0	0.0	0.0	0.5	0.0	0.0	12.9	87.1
PACE	Plan BB	79.7	81.7	79.1	91.7	5.6	2.8	0.0	0.0	0.0	0.0	0.0	25.0	75.0
PACE	Plan CC <sup>3</sup>	78.1	77.0	78.6	24.1	25.9	6.9	27.2	15.5	0.0	0.4	0.0	27.0	73.0
PACE	Plan DD	81.3	78.0	82.2	69.2	25.3	0.0	0.7	4.8	0.0	0.0	0.0	21.9	78.1
PACE	Plan EE	77.0	76.6	77.1	20.2	76.6	1.6	1.6	0.0	0.0	0.0	0.0	15.3	84.7
PACE	Plan FF	71.8	68.0	72.8	47.3	51.6	0.5	0.0	0.0	0.5	0.0	0.0	20.3	79.7
PACE	Plan GG	80.1	75.3	81.6	89.7	6.0	1.0	2.0	1.3	0.0	0.0	0.0	23.7	76.3
PACE	Plan HH	78.9	75.5	79.9	4.9	92.3	0.0	0.7	1.4	0.0	0.7	0.0	23.8	76.2
PACE	Plan II	79.4	77.3	80.0	63.0	37.0	0.0	0.0	0.0	0.0	0.0	0.0	22.2	77.8
PACE	Plan JJ	80.5	75.9	81.6	66.1	33.3	0.0	0.6	0.0	0.0	0.0	0.0	19.4	80.6
PACE	Plan KK	78.7	80.0	78.4	35.6	64.4	0.0	0.0	0.0	0.0	0.0	0.0	17.8	82.2
PACE	Plan LL	77.0	73.0	77.6	73.2	12.2	2.4	2.4	9.8	0.0	0.0	0.0	12.2	87.8
PACE	Plan MM	80.3	74.9	82.0	21.4	77.3	0.0	0.0	1.3	0.0	0.0	0.0	24.7	75.3
PACE	Plan NN	78.4	73.0	80.4	54.4	45.6	0.0	0.0	0.0	0.0	0.0	0.0	26.5	73.5
PACE	Plan OO	77.1	75.3	77.7	85.4	7.9	0.0	0.0	6.7	0.0	0.0	0.0	24.7	75.3
PACE	Plan PP	78.6	78.5	78.7	50.2	1.6	1.6	0.2	46.2	0.0	0.2	0.0	34.7	65.3
PACE	Plan QQ	77.9	73.5	80.2	73.6	19.0	2.5	4.1	0.0	0.8	0.0	0.0	34.7	65.3
WPP	Plan RR	60.9	59.3	61.5	73.1	20.9	1.5	3.0	1.5	0.0	0.0	0.0	31.3	68.7
WPP	Plan SS	76.3	74.7	76.9	99.0	0.2	0.0	0.4	0.0	0.2	0.2	0.0	28.9	71.1
WPP	Plan TT	75.3	73.5	76.0	50.9	47.4	0.0	0.0	0.9	0.9	0.0	0.0	28.9	71.1
WPP	Plan UU	78.0	76.4	78.6	83.7	8.7	0.6	3.5	2.3	0.6	0.6	0.0	24.4	75.6
PACE	Plan VV	77.5	71.2	79.2	61.0	31.7	0.5	0.5	5.2	0.7	0.5	0.0	21.4	78.6
PACE	Plan WW	80.3	77.0	81.3	81.8	4.2	0.7	0.0	11.9	1.4	0.0	0.0	23.8	76.2
PACE	Plan XX	83.2	81.5	83.8	19.6	3.7	9.1	60.9	6.2	0.1	0.3	0.0	28.8	71.2
PACE	Plan YY	77.4	75.9	78.2	27.9	50.7	2.8	12.6	5.1	0.9	0.0	0.0	37.7	62.3
PACE	Plan ZZ	82.7	72.8	83.7	64.5	17.2	2.2	8.6	7.5	0.0	0.0	0.0	9.7	90.3

NOTES:

<sup>1</sup> Respondents are defined as eligibles who completed all 6 ADL questions (items 4a-4f).

<sup>2</sup> SCO participants are aged 65+.

<sup>3</sup> Sampled plans, where contact information was not collected.

SOURCE: RTI analysis of the 2007 HOS-M survey.

Computer Output: hosm2007\_04.xls

**Table 5**  
**2007 HOS-M: Survey mode by plan<sup>1</sup>**  
**Community-residing non-ESRD respondents aged 55+<sup>2</sup>**

Plan type	Plan name	Telephone interview	Mail
		%	%
TOTAL SAMPLE		21.5	78.5
PACE TOTAL		24.6	75.4
DUAL ELIGIBLE DEMOS TOTAL		18.9	81.1
MSHO/MnDHO TOTAL		15.6	84.4
WPP TOTAL		22.5	77.5
SCO TOTAL		25.9	74.1
PACE	Plan A	21.5	78.5
PACE	Plan B	29.3	70.7
PACE	Plan C	24.6	75.4
PACE	Plan D	25.3	74.7
PACE	Plan E	14.0	86.0
PACE	Plan F	23.2	76.8
PACE	Plan G	10.6	89.4
PACE	Plan H	40.0	60.0
PACE	Plan I	34.7	65.3
PACE	Plan J	21.7	78.3
PACE	Plan K	33.7	66.3
SCO	Plan L <sup>3</sup>	21.5	78.5
SCO	Plan M	28.7	71.3
SCO	Plan N <sup>3</sup>	27.8	72.2
PACE	Plan O	20.3	79.7
MSHO/MnDHO	Plan P	26.0	74.0
MSHO/MnDHO	Plan Q <sup>3</sup>	12.6	87.4
MSHO/MnDHO	Plan R	14.9	85.1
MSHO/MnDHO	Plan S <sup>3</sup>	13.6	86.4
MSHO/MnDHO	Plan T <sup>3</sup>	17.1	82.9
MSHO/MnDHO	Plan U	17.9	82.1
MSHO/MnDHO	Plan V <sup>3</sup>	14.6	85.4
MSHO/MnDHO	Plan W <sup>3</sup>	15.0	85.0
MSHO/MnDHO	Plan X	17.2	82.8
MSHO/MnDHO	Plan Y <sup>3</sup>	19.0	81.0
PACE	Plan Z	17.3	82.7
PACE	Plan AA	17.4	82.6

(continued)

**Table 5 (continued)**  
**2007 HOS-M: Survey mode by plan<sup>1</sup>**  
**Community-residing non-ESRD respondents aged 55+<sup>2</sup>**

Plan type	Plan name	Telephone interview	Mail
		%	%
PACE	Plan BB	13.9	86.1
PACE	Plan CC <sup>3</sup>	20.8	79.2
PACE	Plan DD	28.1	71.9
PACE	Plan EE	35.5	64.5
PACE	Plan FF	23.1	76.9
PACE	Plan GG	33.5	66.5
PACE	Plan HH	36.4	63.6
PACE	Plan II	20.4	79.6
PACE	Plan JJ	28.5	71.5
PACE	Plan KK	33.3	66.7
PACE	Plan LL	39.0	61.0
PACE	Plan MM	27.9	72.1
PACE	Plan NN	18.4	81.6
PACE	Plan OO	18.0	82.0
PACE	Plan PP	22.7	77.3
PACE	Plan QQ	14.9	85.1
WPP	Plan RR	20.9	79.1
WPP	Plan SS	20.6	79.4
WPP	Plan TT	29.8	70.2
WPP	Plan UU	23.3	76.7
PACE	Plan VV	20.7	79.3
PACE	Plan WW	40.6	59.4
PACE	Plan XX	25.5	74.5
PACE	Plan YY	13.0	87.0
PACE	Plan ZZ	35.5	64.5

NOTES:

<sup>1</sup> Respondents are defined as eligibles who completed all 6 ADL questions (items 4a-4f).

<sup>2</sup> SCO participants are aged 65+.

<sup>3</sup> Sampled plans, where contact information was not collected.

SOURCE: RTI analysis of the 2007 HOS-M survey.

Computer Output: hosm2007\_05.xls

**Table 6**  
**2007 HOS-M: Functional status by plan (proportions)**  
**Community residing non-ESRD respondents<sup>1</sup> aged 55+<sup>2</sup>**

Plan type	Plan name	# of respondents	Mean # of ADLs	No ADLs	1-2 ADLs	3-4 ADLs	5-6 ADLs
				%	%	%	%
TOTAL SAMPLE		14,877	2.7	24.1	27.5	20.7	27.7
PACE TOTAL		6,651	3.4	13.2	23.5	23.9	39.3
DUAL ELIGIBLE DEMOS TOTAL		8,226	2.1	32.9	30.7	18.1	18.3
MSHO/MnDHO TOTAL		5,224	2.0	35.0	31.5	17.1	16.3
WPP TOTAL		1,031	2.9	19.1	27.3	24.7	28.9
SCO TOTAL		1,971	2.0	34.3	30.3	17.3	18.1
PACE	Plan A	191	3.1	19.4	21.5	24.1	35.1
PACE	Plan B	509	2.9	16.7	28.1	26.3	28.9
PACE	Plan C	69	3.6	10.1	20.3	24.6	44.9
PACE	Plan D	95	3.2	10.5	26.3	28.4	34.7
PACE	Plan E	57	3.9	3.5	22.8	26.3	47.4
PACE	Plan F	95	3.0	15.8	27.4	23.2	33.7
PACE	Plan G	207	4.1	6.8	13.0	26.6	53.6
PACE	Plan H	60	3.5	10.0	20.0	36.7	33.3
PACE	Plan I	49	2.3	26.5	30.6	24.5	18.4
PACE	Plan J	207	2.8	19.3	30.0	24.2	26.6
PACE	Plan K	166	3.5	8.4	25.9	27.7	38.0
SCO	Plan L <sup>3</sup>	680	1.9	36.9	31.8	15.6	15.7
SCO	Plan M	526	2.6	26.2	25.3	21.1	27.4
SCO	Plan N <sup>3</sup>	765	1.8	37.6	32.4	16.1	13.9
PACE	Plan O	74	3.7	12.2	17.6	28.4	41.9
MSHO/MnDHO	Plan P	50	3.4	16.0	22.0	22.0	40.0
MSHO/MnDHO	Plan Q <sup>3</sup>	725	1.7	40.0	30.5	17.8	11.7
MSHO/MnDHO	Plan R	202	2.1	27.7	38.1	16.3	17.8
MSHO/MnDHO	Plan S <sup>3</sup>	760	1.8	34.6	34.2	18.2	13.0
MSHO/MnDHO	Plan T <sup>3</sup>	492	2.2	35.6	28.5	11.8	24.2
MSHO/MnDHO	Plan U	374	2.1	29.4	33.2	19.3	18.2
MSHO/MnDHO	Plan V <sup>3</sup>	788	2.0	32.1	32.6	18.8	16.5
MSHO/MnDHO	Plan W <sup>3</sup>	714	2.0	35.3	30.5	16.7	17.5

(continued)

**Table 6 (continued)**  
**2007 HOS-M: Functional status by plan (proportions)**  
**Community residing non-ESRD respondents<sup>1</sup> aged 55+<sup>2</sup>**

Plan type	Plan name	# of respondents	Mean # of ADLs	No ADLs	1-2 ADLs	3-4 ADLs	5-6 ADLs
				%	%	%	%
MSHO/MnDHO	Plan X	354	1.8	39.0	30.8	17.5	12.7
MSHO/MnDHO	Plan Y <sup>3</sup>	765	1.9	37.3	29.9	16.3	16.5
PACE	Plan Z	81	3.5	13.6	22.2	17.3	46.9
PACE	Plan AA	201	3.7	8.5	20.9	26.9	43.8
PACE	Plan BB	36	4.8	0.0	13.9	19.4	66.7
PACE	Plan CC <sup>3</sup>	710	3.3	15.2	21.4	25.6	37.7
PACE	Plan DD	146	3.8	10.3	17.8	22.6	49.3
PACE	Plan EE	124	3.6	8.9	24.2	25.0	41.9
PACE	Plan FF	182	2.6	15.9	34.6	28.6	20.9
PACE	Plan GG	397	4.0	8.3	17.6	19.6	54.4
PACE	Plan HH	143	3.3	15.4	20.3	25.9	38.5
PACE	Plan II	108	3.0	14.8	28.7	27.8	28.7
PACE	Plan JJ	165	3.3	17.0	20.0	24.2	38.8
PACE	Plan KK	45	2.9	11.1	35.6	28.9	24.4
PACE	Plan LL	41	4.1	4.9	14.6	26.8	53.7
PACE	Plan MM	154	4.3	4.5	15.6	20.1	59.7
PACE	Plan NN	136	4.0	7.4	16.2	26.5	50.0
PACE	Plan OO	89	2.6	23.6	31.5	21.3	23.6
PACE	Plan PP	444	3.4	15.3	23.4	20.9	40.3
PACE	Plan QQ	121	3.9	5.8	19.0	23.1	52.1
WPP	Plan RR	67	3.6	10.4	19.4	29.9	40.3
WPP	Plan SS	506	2.7	21.5	28.3	24.5	25.7
WPP	Plan TT	114	3.2	14.0	22.8	29.8	33.3
WPP	Plan UU	344	2.8	18.9	28.8	22.4	29.9
PACE	Plan VV	420	3.0	15.7	28.3	25.0	31.0
PACE	Plan WW	143	3.7	11.9	18.9	20.3	49.0
PACE	Plan XX	678	3.3	13.7	26.3	20.6	39.4
PACE	Plan YY	215	3.1	14.4	32.1	16.7	36.7
PACE	Plan ZZ	93	3.6	12.9	18.3	28.0	40.9

NOTES:

<sup>1</sup> Respondents are defined as eligibles who completed all 6 ADL questions (items 4a-4f).

<sup>2</sup> SCO participants are aged 65+.

<sup>3</sup> Sampled plans, where contact information was not collected.

SOURCE: RTI analysis of the 2007 HOS-M survey.

Computer Output: hosm2007\_01\_pct.xls

**Table 7**  
**2007 HOS-M: Functional status by plan (frequencies)**  
**Community residing non-ESRD respondents<sup>1</sup> aged 55+<sup>2</sup>**

Plan type	Plan name	# of respondents	Mean # of ADLs	No ADLs	1-2 ADLs	3-4 ADLs	5-6 ADLs
TOTAL SAMPLE		14,877	2.7	3,585	4,090	3,082	4,120
PACE TOTAL		6,651	3.4	881	1,566	1,592	2,612
DUAL ELIGIBLE DEMOS TOTAL		8,226	2.1	2,704	2,524	1,490	1,508
MSHO/MnDHO TOTAL		5,224	2.0	1,830	1,646	895	853
WPP TOTAL		1,031	2.9	197	281	255	298
SCO TOTAL		1,971	2.0	677	597	340	357
PACE	Plan A	191	3.1	37	41	46	67
PACE	Plan B	509	2.9	85	143	134	147
PACE	Plan C	69	3.6	7	14	17	31
PACE	Plan D	95	3.2	10	25	27	33
PACE	Plan E	57	3.9	2	13	15	27
PACE	Plan F	95	3.0	15	26	22	32
PACE	Plan G	207	4.1	14	27	55	111
PACE	Plan H	60	3.5	6	12	22	20
PACE	Plan I	49	2.3	13	15	12	9
PACE	Plan J	207	2.8	40	62	50	55
PACE	Plan K	166	3.5	14	43	46	63
SCO	Plan L <sup>3</sup>	680	1.9	251	216	106	107
SCO	Plan M	526	2.6	138	133	111	144
SCO	Plan N <sup>3</sup>	765	1.8	288	248	123	106
PACE	Plan O	74	3.7	9	13	21	31
MSHO/MnDHO	Plan P	50	3.4	8	11	11	20
MSHO/MnDHO	Plan Q <sup>3</sup>	725	1.7	290	221	129	85
MSHO/MnDHO	Plan R	202	2.1	56	77	33	36
MSHO/MnDHO	Plan S <sup>3</sup>	760	1.8	263	260	138	99
MSHO/MnDHO	Plan T <sup>3</sup>	492	2.2	175	140	58	119
MSHO/MnDHO	Plan U	374	2.1	110	124	72	68
MSHO/MnDHO	Plan V <sup>3</sup>	788	2.0	253	257	148	130
MSHO/MnDHO	Plan W <sup>3</sup>	714	2.0	252	218	119	125

(continued)



**Table 7 (continued)**  
**2007 HOS-M: Functional status by plan (frequencies)**  
**Community residing non-ESRD respondents<sup>1</sup> aged 55+<sup>2</sup>**

Plan type	Plan name	# of respondents	Mean # of ADLs	No ADLs	1-2 ADLs	3-4 ADLs	5-6 ADLs
MSHO/MnDHO	Plan X	354	1.8	138	109	62	45
MSHO/MnDHO	Plan Y <sup>3</sup>	765	1.9	285	229	125	126
PACE	Plan Z	81	3.5	11	18	14	38
PACE	Plan AA	201	3.7	17	42	54	88
PACE	Plan BB	36	4.8	0	5	7	24
PACE	Plan CC <sup>3</sup>	710	3.3	108	152	182	268
PACE	Plan DD	146	3.8	15	26	33	72
PACE	Plan EE	124	3.6	11	30	31	52
PACE	Plan FF	182	2.6	29	63	52	38
PACE	Plan GG	397	4.0	33	70	78	216
PACE	Plan HH	143	3.3	22	29	37	55
PACE	Plan II	108	3.0	16	31	30	31
PACE	Plan JJ	165	3.3	28	33	40	64
PACE	Plan KK	45	2.9	5	16	13	11
PACE	Plan LL	41	4.1	2	6	11	22
PACE	Plan MM	154	4.3	7	24	31	92
PACE	Plan NN	136	4.0	10	22	36	68
PACE	Plan OO	89	2.6	21	28	19	21
PACE	Plan PP	444	3.4	68	104	93	179
PACE	Plan QQ	121	3.9	7	23	28	63
WPP	Plan RR	67	3.6	7	13	20	27
WPP	Plan SS	506	2.7	109	143	124	130
WPP	Plan TT	114	3.2	16	26	34	38
WPP	Plan UU	344	2.8	65	99	77	103
PACE	Plan VV	420	3.0	66	119	105	130
PACE	Plan WW	143	3.7	17	27	29	70
PACE	Plan XX	678	3.3	93	178	140	267
PACE	Plan YY	215	3.1	31	69	36	79
PACE	Plan ZZ	93	3.6	12	17	26	38

NOTES:

<sup>1</sup> Respondents are defined as eligibles who completed all 6 ADL questions (items 4a-4f).

<sup>2</sup> SCO participants are aged 65+.

<sup>3</sup> Sampled plans, where contact information was not collected.

SOURCE: RTI analysis of the 2007 HOS-M survey.

Computer Output: hosm2007\_01\_cnt.xls

**Table 8**  
**2007 and 2006 HOS-M: Comparison of functional status (proportions)**  
**Community residing non-ESRD respondents<sup>1</sup> aged 55+<sup>2</sup>**

Plan type	Plan name	2007 HOS-M						2006 HOS-M					
		# of respondents	Mean # of ADLs	No ADLs	1-2 ADLs	3-4 ADLs	5-6 ADLs	# of respondents	Mean # of ADLs	No ADLs	1-2 ADLs	3-4 ADLs	5-6 ADLs
				%	%	%	%			%	%	%	%
TOTAL SAMPLE		14,877	2.7	24.1	27.5	20.7	27.7	12,370	2.7	23.2	27.4	20.4	29.1
PACE TOTAL		6,651	3.4	13.2	23.5	23.9	39.3	6,131	3.5	12.2	23.8	23.2	40.8
DUAL ELIGIBLE DEMOS TOTAL		8,226	2.1	32.9	30.7	18.1	18.3	6,239	2.0	34.0	30.9	17.5	17.6
MSHO/MnDHO TOTAL		5,224	2.0	35.0	31.5	17.1	16.3	3,480	1.9	36.5	31.7	16.2	15.6
WPP TOTAL		1,031	2.9	19.1	27.3	24.7	28.9	919	2.9	16.5	30.7	23.8	28.9
SCO TOTAL		1,971	2.0	34.3	30.3	17.3	18.1	1,840	1.8	38.0	29.5	17.0	15.6
PACE	Plan A	191	3.1	19.4	21.5	24.1	35.1	160	3.2	19.4	21.3	15.6	43.8
PACE	Plan B	509	2.9	16.7	28.1	26.3	28.9	529	2.8	16.4	32.1	25.1	26.3
PACE	Plan C	69	3.6	10.1	20.3	24.6	44.9	55	4.1	7.3	14.5	23.6	54.5
PACE	Plan D	95	3.2	10.5	26.3	28.4	34.7	105	3.2	6.7	37.1	24.8	31.4
PACE	Plan E	57	3.9	3.5	22.8	26.3	47.4	72	3.4	5.6	33.3	30.6	30.6
PACE	Plan F	95	3.0	15.8	27.4	23.2	33.7	109	3.2	18.3	21.1	25.7	34.9
PACE	Plan G	207	4.1	6.8	13.0	26.6	53.6	134	4.2	2.2	17.9	25.4	54.5
PACE	Plan H	60	3.5	10.0	20.0	36.7	33.3	45	3.9	4.4	20.0	22.2	53.3
PACE	Plan I	49	2.3	26.5	30.6	24.5	18.4	55	2.7	21.8	27.3	25.5	25.5
PACE	Plan J	207	2.8	19.3	30.0	24.2	26.6	217	3.0	14.7	30.9	20.7	33.6
PACE	Plan K	166	3.5	8.4	25.9	27.7	38.0	117	3.7	5.1	19.7	35.0	40.2
SCO	Plan L <sup>3</sup>	680	1.9	36.9	31.8	15.6	15.7	759	1.8	37.5	30.8	17.3	14.4
SCO	Plan M	526	2.6	26.2	25.3	21.1	27.4	287	2.8	21.6	26.5	22.3	29.6
SCO	Plan N <sup>3</sup>	765	1.8	37.6	32.4	16.1	13.9	794	1.6	44.3	29.2	14.7	11.7
PACE	Plan O	74	3.7	12.2	17.6	28.4	41.9	106	3.7	9.4	18.9	22.6	49.1
MSHO/MnDHO	Plan P	50	3.4	16.0	22.0	22.0	40.0	48	3.7	10.4	20.8	25.0	43.8
MSHO/MnDHO	Plan Q <sup>3</sup>	725	1.7	40.0	30.5	17.8	11.7	469	1.6	42.2	31.1	14.5	12.2
MSHO/MnDHO	Plan R	202	2.1	27.7	38.1	16.3	17.8	188	1.9	37.2	29.3	17.0	16.5
MSHO/MnDHO	Plan S <sup>3</sup>	760	1.8	34.6	34.2	18.2	13.0	538	1.8	34.8	34.8	19.3	11.2
MSHO/MnDHO	Plan T <sup>3</sup>	492	2.2	35.6	28.5	11.8	24.2	424	1.9	40.8	25.7	14.4	19.1
MSHO/MnDHO	Plan U	374	2.1	29.4	33.2	19.3	18.2	262	1.7	37.0	35.9	17.2	9.9
MSHO/MnDHO	Plan V <sup>3</sup>	788	2.0	32.1	32.6	18.8	16.5	569	2.0	32.9	33.0	15.8	18.3
MSHO/MnDHO	Plan W <sup>3</sup>	714	2.0	35.3	30.5	16.7	17.5	491	1.9	37.1	32.0	13.8	17.1
MSHO/MnDHO	Plan X	354	1.8	39.0	30.8	17.5	12.7	—	—	—	—	—	—
MSHO/MnDHO	Plan Y <sup>3</sup>	765	1.9	37.3	29.9	16.3	16.5	491	1.9	35.0	32.2	16.9	15.9
PACE	Plan Z	81	3.5	13.6	22.2	17.3	46.9	100	3.7	10.0	21.0	24.0	45.0
PACE	Plan AA	201	3.7	8.5	20.9	26.9	43.8	188	3.8	9.0	19.7	26.1	45.2

**Table 8 (continued)**  
**2007 and 2006 HOS-M: Comparison of functional status (proportions)**  
**Community residing non-ESRD respondents<sup>1</sup> aged 55+<sup>2</sup>**

Plan type	Plan name	2007 HOS-M						2006 HOS-M					
		# of	Mean # of	No	1-2	3-4	5-6	# of	Mean # of	No	1-2	3-4	5-6
		respondents	ADLs	ADLs	ADLs	ADLs	ADLs	respondents	ADLs	ADLs	ADLs	ADLs	ADLs
		%	%	%	%			%	%	%	%		
PACE	Plan BB	36	4.8	0.0	13.9	19.4	66.7	43	4.6	2.3	7.0	30.2	60.5
PACE	Plan CC <sup>3</sup>	710	3.3	15.2	21.4	25.6	37.7	597	3.4	10.9	26.6	24.6	37.9
PACE	Plan DD	146	3.8	10.3	17.8	22.6	49.3	159	3.8	9.4	17.0	22.6	50.9
PACE	Plan EE	124	3.6	8.9	24.2	25.0	41.9	130	3.2	20.0	16.9	26.9	36.2
PACE	Plan FF	182	2.6	15.9	34.6	28.6	20.9	171	2.8	11.1	33.9	35.7	19.3
PACE	Plan GG	397	4.0	8.3	17.6	19.6	54.4	390	3.9	8.7	19.5	22.1	49.7
PACE	Plan HH	143	3.3	15.4	20.3	25.9	38.5	132	3.5	9.8	22.0	28.8	39.4
PACE	Plan II	108	3.0	14.8	28.7	27.8	28.7	120	3.1	12.5	31.7	26.7	29.2
PACE	Plan JJ	165	3.3	17.0	20.0	24.2	38.8	—	—	—	—	—	—
PACE	Plan KK	45	2.9	11.1	35.6	28.9	24.4	—	—	—	—	—	—
PACE	Plan LL	41	4.1	4.9	14.6	26.8	53.7	—	—	—	—	—	—
PACE	Plan MM	154	4.3	4.5	15.6	20.1	59.7	163	4.2	7.4	16.6	19.0	57.1
PACE	Plan NN	136	4.0	7.4	16.2	26.5	50.0	136	4.2	8.1	9.6	22.1	60.3
PACE	Plan OO	89	2.6	23.6	31.5	21.3	23.6	83	2.8	16.9	33.7	19.3	30.1
PACE	Plan PP	444	3.4	15.3	23.4	20.9	40.3	458	3.6	13.5	19.7	20.3	46.5
PACE	Plan QQ	121	3.9	5.8	19.0	23.1	52.1	118	4.4	4.2	10.2	20.3	65.3
WPP	Plan RR	67	3.6	10.4	19.4	29.9	40.3	53	3.7	3.8	18.9	39.6	37.7
WPP	Plan SS	506	2.7	21.5	28.3	24.5	25.7	418	2.6	19.6	35.4	20.3	24.6
WPP	Plan TT	114	3.2	14.0	22.8	29.8	33.3	124	3.0	14.5	27.4	26.6	31.5
WPP	Plan UU	344	2.8	18.9	28.8	22.4	29.9	324	3.0	15.4	27.8	24.7	32.1
PACE	Plan VV	420	3.0	15.7	28.3	25.0	31.0	401	3.0	15.5	30.7	22.9	30.9
PACE	Plan WW	143	3.7	11.9	18.9	20.3	49.0	112	3.6	15.2	16.1	20.5	48.2
PACE	Plan XX	678	3.3	13.7	26.3	20.6	39.4	594	3.5	13.3	23.7	19.5	43.4
PACE	Plan YY	215	3.1	14.4	32.1	16.7	36.7	200	3.0	19.0	27.0	19.5	34.5
PACE	Plan ZZ	93	3.6	12.9	18.3	28.0	40.9	132	3.8	9.8	18.9	18.9	52.3

NOTES:

\* Some plans did not participate in earlier survey years.

<sup>1</sup> Respondents are defined as eligibles who completed all 6 ADL questions (items 4a-4f).

<sup>2</sup> SCO participants are aged 65+.

<sup>3</sup> Sampled plans, where contact information was not collected.

SOURCE: RTI analysis of the 2006 and 2007 HOS-M surveys.

Computer Output: phs2006\_026; hosm2007\_01\_pct.xls

**Table 9**  
**2007 HOS-M: Functional status of by plan and 2006 Medicaid status (proportions)**  
**Community residing non-ESRD respondents<sup>1</sup> aged 55+<sup>2</sup>**

Plan type	Plan name	# of respondents	Mean # of ADLs			No ADLs			1-2 ADLs			3-4 ADLs			5-6 ADLs		
			Total	Medicaid <sup>4</sup> enrollees	Non-Medicaid enrollees	Total	Medicaid enrollees	Non-Medicaid enrollees	Total	Medicaid enrollees	Non-Medicaid enrollees	Total	Medicaid enrollees	Non-Medicaid enrollees	Total	Medicaid enrollees	Non-Medicaid enrollees
					%	%	%	%	%	%	%	%	%	%	%	%	
TOTAL SAMPLE		14,877	2.7	2.5	3.3	24.1	25.8	14.4	27.5	28.2	23.4	20.7	20.1	24.5	27.7	26.0	37.7
PACE TOTAL		6,651	3.4	3.3	3.5	13.2	13.3	13.2	23.5	24.1	21.0	23.9	23.7	25.1	39.3	38.9	40.7
DUAL ELIGIBLE DEMOS TOTAL		8,226	2.1	2.0	3.1	32.9	34.9	16.1	30.7	31.1	26.9	18.1	17.4	23.7	18.3	16.5	33.4
MSHO/MnDHO TOTAL		5,224	2.0	1.8	3.1	35.0	37.1	13.6	31.5	31.4	32.1	17.1	16.7	22.0	16.3	14.8	32.3
WPP TOTAL		1,031	2.9	2.7	3.1	19.1	18.9	19.4	27.3	31.3	21.3	24.7	24.1	25.7	28.9	25.7	33.6
SCO TOTAL		1,971	2.0	2.0	4.5	34.3	34.6	0.0	30.3	30.4	20.0	17.3	17.2	20.0	18.1	17.8	60.0
PACE	Plan A	191	3.1	3.1	0.0	19.4	19.4	0.0	21.5	21.5	0.0	24.1	24.1	0.0	35.1	35.1	0.0
PACE	Plan B	509	2.9	2.9	3.1	16.7	17.2	10.3	28.1	27.7	33.3	26.3	26.4	25.6	28.9	28.7	30.8
PACE	Plan C	69	3.6	3.6	6.0	10.1	10.3	0.0	20.3	20.6	0.0	24.6	25.0	0.0	44.9	44.1	100.0
PACE	Plan D	95	3.2	3.2	4.0	10.5	10.8	0.0	26.3	26.9	0.0	28.4	26.9	100.0	34.7	35.5	0.0
PACE	Plan E	57	3.9	3.9	3.5	3.5	3.6	0.0	22.8	21.8	50.0	26.3	27.3	0.0	47.4	47.3	50.0
PACE	Plan F	95	3.0	3.2	2.9	15.8	13.5	18.6	27.4	26.9	27.9	23.2	25.0	20.9	33.7	34.6	32.6
PACE	Plan G	207	4.1	4.2	4.0	6.8	7.1	6.3	13.0	12.6	13.8	26.6	25.2	28.8	53.6	55.1	51.3
PACE	Plan H	60	3.5	3.7	2.6	10.0	9.6	12.5	20.0	17.3	37.5	36.7	36.5	37.5	33.3	36.5	12.5
PACE	Plan I	49	2.3	2.3	2.4	26.5	29.0	22.2	30.6	32.3	27.8	24.5	16.1	38.9	18.4	22.6	11.1
PACE	Plan J	207	2.8	2.8	2.6	19.3	18.0	27.6	30.0	30.9	24.1	24.2	24.7	20.7	26.6	26.4	27.6
PACE	Plan K	166	3.5	3.4	3.7	8.4	7.4	12.9	25.9	29.6	9.7	27.7	25.2	38.7	38.0	37.8	38.7
SCO	Plan L <sup>3</sup>	680	1.9	1.9	4.5	36.9	37.1	0.0	31.8	31.8	25.0	15.6	15.5	25.0	15.7	15.5	50.0
SCO	Plan M	526	2.6	2.6	3.8	26.2	26.5	0.0	25.3	25.2	33.3	21.1	21.2	16.7	27.4	27.1	50.0
SCO	Plan N <sup>3</sup>	765	1.8	1.8	5.2	37.6	37.9	0.0	32.4	32.6	0.0	16.1	16.1	20.0	13.9	13.4	80.0
PACE	Plan O	74	3.7	3.9	3.3	12.2	9.8	15.2	17.6	12.2	24.2	28.4	29.3	27.3	41.9	48.8	33.3
MSHO/MnDHO	Plan P	50	3.4	3.2	3.8	16.0	16.7	14.3	22.0	25.0	14.3	22.0	22.2	21.4	40.0	36.1	50.0
MSHO/MnDHO	Plan Q <sup>3</sup>	725	1.7	1.6	3.2	40.0	42.6	10.3	30.5	30.3	32.8	17.8	17.2	24.1	11.7	9.9	32.8
MSHO/MnDHO	Plan R	202	2.1	1.9	3.4	27.7	30.3	8.3	38.1	38.8	33.3	16.3	16.3	16.7	17.8	14.6	41.7
MSHO/MnDHO	Plan S <sup>3</sup>	760	1.8	1.8	2.6	34.6	36.4	17.8	34.2	33.9	37.0	18.2	17.5	24.7	13.0	12.2	20.5
MSHO/MnDHO	Plan T <sup>3</sup>	492	2.2	2.1	2.9	35.6	37.7	12.2	28.5	27.3	41.5	11.8	11.8	12.2	24.2	23.3	34.1
MSHO/MnDHO	Plan U	374	2.1	1.9	3.2	29.4	33.3	14.3	33.2	34.3	28.6	19.3	19.2	19.5	18.2	13.1	37.7
MSHO/MnDHO	Plan V <sup>3</sup>	788	2.0	1.9	3.1	32.1	34.7	10.7	32.6	32.7	32.1	18.8	17.9	26.2	16.5	14.8	31.0
MSHO/MnDHO	Plan W <sup>3</sup>	714	2.0	1.9	2.8	35.3	36.1	21.1	30.5	30.8	26.3	16.7	16.3	23.7	17.5	16.9	28.9
MSHO/MnDHO	Plan X	354	1.8	1.8	3.5	39.0	39.4	16.7	30.8	31.0	16.7	17.5	17.5	16.7	12.7	12.1	50.0
MSHO/MnDHO	Plan Y <sup>3</sup>	765	1.9	1.8	3.2	37.3	39.0	12.2	29.9	29.7	32.7	16.3	15.9	22.4	16.5	15.4	32.7
PACE	Plan Z	81	3.5	3.3	3.9	13.6	17.5	4.2	22.2	21.1	25.0	17.3	15.8	20.8	46.9	45.6	50.0
PACE	Plan AA	201	3.7	3.8	3.6	8.5	4.8	10.1	20.9	22.6	20.1	26.9	29.0	25.9	43.8	43.5	43.9
PACE	Plan BB	36	4.8	4.4	5.1	0.0	0.0	0.0	13.9	23.5	5.3	19.4	23.5	15.8	66.7	52.9	78.9
PACE	Plan CC <sup>3</sup>	710	3.3	3.3	3.6	15.2	15.5	14.2	21.4	23.1	14.9	25.6	24.4	30.4	37.7	37.0	40.5
PACE	Plan DD	146	3.8	3.7	3.8	10.3	6.3	13.4	17.8	21.9	14.6	22.6	25.0	20.7	49.3	46.9	51.2
PACE	Plan EE	124	3.6	3.6	3.3	8.9	7.9	20.0	24.2	24.6	20.0	25.0	25.4	20.0	41.9	42.1	40.0
PACE	Plan FF	182	2.6	2.6	2.8	15.9	16.5	8.3	34.6	34.1	41.7	28.6	28.2	33.3	20.9	21.2	16.7
PACE	Plan GG	397	4.0	4.0	4.0	8.3	8.2	9.4	17.6	17.8	15.6	19.6	20.0	15.6	54.4	54.0	59.4
PACE	Plan HH	143	3.3	3.3	3.3	15.4	13.2	17.9	20.3	19.7	20.9	25.9	30.3	20.9	38.5	36.8	40.3
PACE	Plan II	108	3.0	3.0	3.0	14.8	15.9	12.8	28.7	29.0	28.2	27.8	24.6	33.3	28.7	30.4	25.6

(continued)

**Table 9**  
**2007 HOS-M: Functional status of by plan and 2006 Medicaid status (proportions)**  
**Community residing non-ESRD respondents<sup>1</sup> aged 55+<sup>2</sup>**

Plan type	Plan name	# of respondents	Mean # of ADLs			No ADLs			1-2 ADLs			3-4 ADLs			5-6 ADLs		
			Total	Non-Medicaid <sup>4</sup>		Total	Non-Medicaid		Total	Non-Medicaid		Total	Non-Medicaid		Total	Non-Medicaid	
				enrollees	enrollees		enrollees	enrollees		enrollees	enrollees		enrollees	enrollees		enrollees	enrollees
			%	%	%	%	%	%	%	%	%	%	%	%	%	%	
PACE	Plan JJ	165	3.3	3.2	3.4	17.0	16.5	17.7	20.0	19.4	21.0	24.2	27.2	19.4	38.8	36.9	41.9
PACE	Plan KK	45	2.9	2.6	3.5	11.1	12.1	8.3	35.6	39.4	25.0	28.9	30.3	25.0	24.4	18.2	41.7
PACE	Plan LL	41	4.1	4.0	4.3	4.9	7.7	0.0	14.6	15.4	13.3	26.8	23.1	33.3	53.7	53.8	53.3
PACE	Plan MM	154	4.3	4.3	0.0	4.5	4.5	0.0	15.6	15.6	0.0	20.1	20.1	0.0	59.7	59.7	0.0
PACE	Plan NN	136	4.0	3.9	4.1	7.4	8.0	6.3	16.2	14.8	18.8	26.5	30.7	18.8	50.0	46.6	56.3
PACE	Plan OO	89	2.6	2.4	3.0	23.6	22.4	25.8	31.5	37.9	19.4	21.3	20.7	22.6	23.6	19.0	32.3
PACE	Plan PP	444	3.4	3.4	3.3	15.3	14.6	17.2	23.4	23.8	22.4	20.9	20.4	22.4	40.3	41.2	37.9
PACE	Plan QQ	121	3.9	3.9	5.3	5.8	5.9	0.0	19.0	19.5	0.0	23.1	22.9	33.3	52.1	51.7	66.7
WPP	Plan RR	67	3.6	3.4	4.2	10.4	10.9	9.5	19.4	23.9	9.5	29.9	30.4	28.6	40.3	34.8	52.4
WPP	Plan SS	506	2.7	2.6	2.8	21.5	19.7	24.3	28.3	32.3	22.3	24.5	23.7	25.7	25.7	24.3	27.7
WPP	Plan TT	114	3.2	2.7	3.7	14.0	16.7	11.1	22.8	28.3	16.7	29.8	33.3	25.9	33.3	21.7	46.3
WPP	Plan UU	344	2.8	2.7	3.1	18.9	20.2	16.9	28.8	32.2	23.5	22.4	20.7	25.0	29.9	26.9	34.6
PACE	Plan VV	420	3.0	3.0	3.2	15.7	17.4	11.3	28.3	26.9	32.2	25.0	25.6	23.5	31.0	30.2	33.0
PACE	Plan WW	143	3.7	3.7	2.5	11.9	10.9	33.3	18.9	18.2	33.3	20.3	21.2	0.0	49.0	49.6	33.3
PACE	Plan XX	678	3.3	3.3	3.2	13.7	13.6	20.0	26.3	26.5	10.0	20.6	20.4	40.0	39.4	39.5	30.0
PACE	Plan YY	215	3.1	3.1	3.0	14.4	14.6	0.0	32.1	32.1	33.3	16.7	16.0	66.7	36.7	37.3	0.0
PACE	Plan ZZ	93	3.6	3.5	6.0	12.9	13.0	0.0	18.3	18.5	0.0	28.0	28.3	0.0	40.9	40.2	100.0

NOTES:

<sup>1</sup> Respondents are defined as eligibles who completed all 6 ADL questions (items 4a-4f).

<sup>2</sup> SCO participants are aged 65+.

<sup>3</sup> Sampled plans, where contact information was not collected.

<sup>4</sup> Medicaid is defined as having at least one month of Medicaid enrollment in 2006; flag received from CMS/FU Associates.

SOURCE: RTI analysis of the 2007 HOS-M survey.

Computer Output: hosm2007\_01\_mcaid\_pct\_edited.xls

**Table 10**  
**2007 HOS-M: Functional status by plan and 2006 Medicaid status (frequencies)**  
**Community residing non-ESRD respondents<sup>1</sup> aged 55+<sup>2</sup>**

Plan type	Plan name	# of Respondents			No ADLs			1-2 ADLs			3-4 ADLs			5-6 ADLs		
		Total	Medicaid <sup>4</sup> enrollees	Non-Medicaid enrollees	Total	Medicaid enrollees	Non-Medicaid enrollees	Total	Medicaid enrollees	Non-Medicaid enrollees	Total	Medicaid enrollees	Non-Medicaid enrollees	Total	Medicaid enrollees	Non-Medicaid enrollees
TOTAL SAMPLE		14,877	12,701	2,176	3,585	3,272	313	4,090	3,580	510	3,082	2,549	533	4,120	3,300	820
PACE TOTAL		6,651	5,371	1,280	881	712	169	1,566	1,297	269	1,592	1,271	321	2,612	2,091	521
DUAL ELIGIBLE DEMOS TOTAL		8,226	7,330	896	1,830	1,767	63	1,646	1,497	149	895	793	102	853	703	150
MSHO/MnDHO TOTAL		5,224	4,760	464	197	116	81	281	192	89	255	148	107	298	158	140
WPP TOTAL		1,031	614	417	677	677	0	597	594	3	340	337	3	357	348	9
SCO TOTAL		1,971	1,956	15	2,704	2,560	144	2,524	2,283	241	1,490	1,278	212	1,508	1,209	299
PACE	Plan A	191	191	0	37	37	0	41	41	0	46	46	0	67	67	0
PACE	Plan B	509	470	39	85	81	4	143	130	13	134	124	10	147	135	12
PACE	Plan C	69	68	1	7	7	0	14	14	0	17	17	0	31	30	1
PACE	Plan D	95	93	2	10	10	0	25	25	0	27	25	2	33	33	0
PACE	Plan E	57	55	2	2	2	0	13	12	1	15	15	0	27	26	1
PACE	Plan F	95	52	43	15	7	8	26	14	12	22	13	9	32	18	14
PACE	Plan G	207	127	80	14	9	5	27	16	11	55	32	23	111	70	41
PACE	Plan H	60	52	8	6	5	1	12	9	3	22	19	3	20	19	1
PACE	Plan I	49	31	18	13	9	4	15	10	5	12	5	7	9	7	2
PACE	Plan J	207	178	29	40	32	8	62	55	7	50	44	6	55	47	8
PACE	Plan K	166	135	31	14	10	4	43	40	3	46	34	12	63	51	12
SCO	Plan L <sup>3</sup>	680	676	4	251	251	0	216	215	1	106	105	1	107	105	2
SCO	Plan M	526	520	6	138	138	0	133	131	2	111	110	1	144	141	3
SCO	Plan N <sup>3</sup>	765	760	5	288	288	0	248	248	0	123	122	1	106	102	4
PACE	Plan O	74	41	33	9	4	5	13	5	8	21	12	9	31	20	11
MSHO/MnDHO	Plan P	50	36	14	8	6	2	11	9	2	11	8	3	20	13	7
MSHO/MnDHO	Plan Q <sup>3</sup>	725	667	58	290	284	6	221	202	19	129	115	14	85	66	19
MSHO/MnDHO	Plan R	202	178	24	56	54	2	77	69	8	33	29	4	36	26	10
MSHO/MnDHO	Plan S <sup>3</sup>	760	687	73	263	250	13	260	233	27	138	120	18	99	84	15
MSHO/MnDHO	Plan T <sup>3</sup>	492	451	41	175	170	5	140	123	17	58	53	5	119	105	14
MSHO/MnDHO	Plan U	374	297	77	110	99	11	124	102	22	72	57	15	68	39	29
MSHO/MnDHO	Plan V <sup>3</sup>	788	704	84	253	244	9	257	230	27	148	126	22	130	104	26
MSHO/MnDHO	Plan W <sup>3</sup>	714	676	38	252	244	8	218	208	10	119	110	9	125	114	11
MSHO/MnDHO	Plan X	354	348	6	138	137	1	109	108	1	62	61	1	45	42	3
MSHO/MnDHO	Plan Y <sup>3</sup>	765	716	49	285	279	6	229	213	16	125	114	11	126	110	16
PACE	Plan Z	81	57	24	11	10	1	18	12	6	14	9	5	38	26	12
PACE	Plan AA	201	62	139	17	3	14	42	14	28	54	18	36	88	27	61
PACE	Plan BB	36	17	19	0	0	0	5	4	1	7	4	3	24	9	15
PACE	Plan CC <sup>3</sup>	710	562	148	108	87	21	152	130	22	182	137	45	268	208	60
PACE	Plan DD	146	64	82	15	4	11	26	14	12	33	16	17	72	30	42
PACE	Plan EE	124	114	10	11	9	2	30	28	2	31	29	2	52	48	4
PACE	Plan FF	182	170	12	29	28	1	63	58	5	52	48	4	38	36	2
PACE	Plan GG	397	365	32	33	30	3	70	65	5	78	73	5	216	197	19

(continued)

**Table 10**  
**2007 HOS-M: Functional status by plan and 2006 Medicaid status (frequencies)**  
**Community residing non-ESRD respondents<sup>1</sup> aged 55+<sup>2</sup>**

Plan type	Plan name	# of Respondents			No ADLs			1-2 ADLs			3-4 ADLs			5-6 ADLs		
		Total	Medicaid <sup>4</sup> enrollees	Non-Medicaid enrollees	Total	Medicaid enrollees	Non-Medicaid enrollees	Total	Medicaid enrollees	Non-Medicaid enrollees	Total	Medicaid enrollees	Non-Medicaid enrollees	Total	Medicaid enrollees	Non-Medicaid enrollees
PACE	Plan HH	143	76	67	22	10	12	29	15	14	37	23	14	55	28	27
PACE	Plan II	108	69	39	16	11	5	31	20	11	30	17	13	31	21	10
PACE	Plan JJ	165	103	62	28	17	11	33	20	13	40	28	12	64	38	26
PACE	Plan KK	45	33	12	5	4	1	16	13	3	13	10	3	11	6	5
PACE	Plan LL	41	26	15	2	2	0	6	4	2	11	6	5	22	14	8
PACE	Plan MM	154	154	0	7	7	0	24	24	0	31	31	0	92	92	0
PACE	Plan NN	136	88	48	10	7	3	22	13	9	36	27	9	68	41	27
PACE	Plan OO	89	58	31	21	13	8	28	22	6	19	12	7	21	11	10
PACE	Plan PP	444	328	116	68	48	20	104	78	26	93	67	26	179	135	44
PACE	Plan QQ	121	118	3	7	7	0	23	23	0	28	27	1	63	61	2
WPP	Plan RR	67	46	21	7	5	2	13	11	2	20	14	6	27	16	11
WPP	Plan SS	506	300	206	109	59	50	143	97	46	124	71	53	130	73	57
WPP	Plan TT	114	60	54	16	10	6	26	17	9	34	20	14	38	13	25
WPP	Plan UU	344	208	136	65	42	23	99	67	32	77	43	34	103	56	47
PACE	Plan VV	420	305	115	66	53	13	119	82	37	105	78	27	130	92	38
PACE	Plan WW	143	137	6	17	15	2	27	25	2	29	29	0	70	68	2
PACE	Plan XX	678	668	10	93	91	2	178	177	1	140	136	4	267	264	3
PACE	Plan YY	215	212	3	31	31	0	69	68	1	36	34	2	79	79	0
PACE	Plan ZZ	93	92	1	12	12	0	17	17	0	26	26	0	38	37	1

NOTES:

<sup>1</sup> Respondents are defined as eligibles who completed all 6 ADL questions (items 4a-4f).

<sup>2</sup> SCO participants are aged 65+.

<sup>3</sup> Sampled plans, where contact information was not collected.

<sup>4</sup> Medicaid is defined as having at least one month of Medicaid enrollment in 2006; flag received from CMS/FU Associates.

SOURCE: RTI analysis of the 2007 HOS-M survey.

Computer Output: hosm2007\_01\_mcaid\_cnt\_edited.xls

**Table 11**  
**2007 HOS-M: Functional status by plan and 2007 Medicaid status (proportions)**  
**Community residing non-ESRD respondents<sup>1</sup> aged 55+<sup>2</sup>**

Plan type	Plan name	# of respondents	Mean # of ADLs			No ADLs			1-2 ADLs			3-4 ADLs			5-6 ADLs		
			Total	Non-Medicaid <sup>4</sup> Medicaid		Total	Non-Medicaid Medicaid		Total	Non-Medicaid Medicaid		Total	Non-Medicaid Medicaid		Total	Non-Medicaid Medicaid	
				enrollees	enrollees		enrollees	enrollees		enrollees	enrollees		enrollees	enrollees		enrollees	enrollees
			%	%	%	%	%	%	%	%	%	%	%	%	%	%	
TOTAL SAMPLE		14,877	2.7	2.6	3.3	24.1	24.6	15.5	27.5	27.8	21.8	20.7	20.5	24.5	27.7	27.1	38.2
PACE TOTAL		6,651	3.4	3.4	3.3	13.2	13.0	16.0	23.5	23.7	21.8	23.9	23.9	24.6	39.3	39.4	37.6
DUAL ELIGIBLE DEMOS TOTAL		8,226	2.1	2.1	3.5	32.9	33.3	13.6	30.7	30.9	21.9	18.1	18.0	24.3	18.3	17.9	40.2
MSHO/MnDHO TOTAL		5,224	2.0	1.9	3.5	35.0	35.5	11.1	31.5	31.6	24.2	17.1	17.0	23.2	16.3	15.8	41.4
WPP TOTAL		1,031	2.9	2.8	3.2	19.1	19.1	18.8	27.3	27.8	18.8	24.7	24.6	26.6	28.9	28.4	35.9
SCO TOTAL		1,971	2.0	2.0	4.7	34.3	34.5	0.0	30.3	30.3	16.7	17.3	17.3	16.7	18.1	18.0	66.7
PACE	Plan A	191	3.1	3.1	0.0	19.4	19.4	0.0	21.5	21.5	0.0	24.1	24.1	0.0	35.1	35.1	0.0
PACE	Plan B	509	2.9	2.9	3.0	16.7	17.0	11.5	28.1	27.5	38.5	26.3	26.7	19.2	28.9	28.8	30.8
PACE	Plan C	69	3.6	3.6	6.0	10.1	10.3	0.0	20.3	20.6	0.0	24.6	25.0	0.0	44.9	44.1	100.0
PACE	Plan D	95	3.2	3.2	4.0	10.5	10.8	0.0	26.3	26.9	0.0	28.4	26.9	100.0	34.7	35.5	0.0
PACE	Plan E	57	3.9	3.9	3.5	3.5	3.6	0.0	22.8	21.8	50.0	26.3	27.3	0.0	47.4	47.3	50.0
PACE	Plan F	95	3.0	3.3	2.6	15.8	11.5	23.5	27.4	24.6	32.4	23.2	27.9	14.7	33.7	36.1	29.4
PACE	Plan G	207	4.1	4.1	3.8	6.8	6.7	8.3	13.0	13.3	8.3	26.6	26.2	33.3	53.6	53.8	50.0
PACE	Plan H	60	3.5	3.6	2.7	10.0	9.3	16.7	20.0	18.5	33.3	36.7	37.0	33.3	33.3	35.2	16.7
PACE	Plan I	49	2.3	2.4	2.1	26.5	26.2	28.6	30.6	33.3	14.3	24.5	19.0	57.1	18.4	21.4	0.0
PACE	Plan J	207	2.8	2.8	2.6	19.3	18.0	27.6	30.0	30.9	24.1	24.2	24.7	20.7	26.6	26.4	27.6
PACE	Plan K	166	3.5	3.5	3.6	8.4	7.1	15.4	25.9	29.3	7.7	27.7	25.7	38.5	38.0	37.9	38.5
SCO-MASS	Plan L <sup>3</sup>	680	1.9	1.9	4.5	36.9	37.1	0.0	31.8	31.8	25.0	15.6	15.5	25.0	15.7	15.5	50.0
SCO-MASS	Plan M	526	2.6	2.6	5.0	26.2	26.3	0.0	25.3	25.3	0.0	21.1	21.1	0.0	27.4	27.2	100.0
SCO-MASS	Plan N <sup>3</sup>	765	1.8	1.8	5.0	37.6	37.7	0.0	32.4	32.5	0.0	16.1	16.1	0.0	13.9	13.7	100.0
PACE	Plan O	74	3.7	3.9	3.3	12.2	9.8	15.2	17.6	12.2	24.2	28.4	29.3	27.3	41.9	48.8	33.3
Dual-Mn	Plan P	50	3.4	3.2	5.8	16.0	17.4	0.0	22.0	23.9	0.0	22.0	23.9	0.0	40.0	34.8	100.0
Dual-Mn	Plan Q <sup>3</sup>	725	1.7	1.7	4.0	40.0	40.4	0.0	30.5	30.7	12.5	17.8	17.4	50.0	11.7	11.4	37.5
Dual-Mn	Plan R	202	2.1	2.1	3.0	27.7	28.0	0.0	38.1	38.0	50.0	16.3	16.0	50.0	17.8	18.0	0.0
Dual-Mn	Plan S <sup>3</sup>	760	1.8	1.8	2.2	34.6	35.0	14.3	34.2	33.9	50.0	18.2	18.0	28.6	13.0	13.1	7.1
Dual-Mn	Plan T <sup>3</sup>	492	2.2	2.2	2.8	35.6	36.0	12.5	28.5	28.3	37.5	11.8	11.6	25.0	24.2	24.2	25.0
Dual-Mn	Plan U	374	2.1	2.0	4.1	29.4	31.3	6.9	33.2	34.5	17.2	19.3	18.6	27.6	18.2	15.7	48.3
Dual-Mn	Plan V <sup>3</sup>	788	2.0	2.0	3.5	32.1	32.4	21.1	32.6	33.0	15.8	18.8	19.1	5.3	16.5	15.5	57.9
Dual-Mn	Plan W <sup>3</sup>	714	2.0	2.0	3.0	35.3	35.5	14.3	30.5	30.6	28.6	16.7	16.5	28.6	17.5	17.4	28.6
Dual-Mn	Plan X	354	1.8	1.8	0.0	39.0	39.0	0.0	30.8	30.8	0.0	17.5	17.5	0.0	12.7	12.7	0.0
Dual-Mn	Plan Y <sup>3</sup>	765	1.9	1.9	3.8	37.3	37.5	12.5	29.9	30.0	25.0	16.3	16.4	12.5	16.5	16.1	50.0
PACE	Plan Z	81	3.5	3.4	5.5	13.6	13.9	0.0	22.2	22.8	0.0	17.3	17.7	0.0	46.9	45.6	100.0
PACE	Plan AA	201	3.7	3.9	3.2	8.5	5.8	12.5	20.9	19.0	23.8	26.9	25.6	28.8	43.8	49.6	35.0
PACE	Plan BB	36	4.8	4.6	5.4	0.0	0.0	0.0	13.9	18.5	0.0	19.4	22.2	11.1	66.7	59.3	88.9
PACE	Plan CC <sup>3</sup>	710	3.3	3.3	3.2	15.2	14.8	24.1	21.4	21.6	17.2	25.6	25.8	20.7	37.7	37.7	37.9
PACE	Plan DD	146	3.8	3.8	3.7	10.3	8.8	19.0	17.8	19.2	9.5	22.6	22.4	23.8	49.3	49.6	47.6
PACE	Plan EE	124	3.6	3.6	3.6	8.9	8.5	14.3	24.2	23.9	28.6	25.0	25.6	14.3	41.9	41.9	42.9
PACE	Plan FF	182	2.6	2.6	2.8	15.9	16.5	8.3	34.6	34.1	41.7	28.6	28.2	33.3	20.9	21.2	16.7
PACE	Plan GG	397	4.0	4.0	4.0	8.3	8.2	9.4	17.6	17.8	15.6	19.6	20.0	15.6	54.4	54.0	59.4
PACE	Plan HH	143	3.3	3.3	3.2	15.4	15.1	16.0	20.3	19.4	22.0	25.9	26.9	24.0	38.5	38.7	38.0
PACE	Plan II	108	3.0	3.1	2.6	14.8	15.8	7.7	28.7	26.3	46.2	27.8	28.4	23.1	28.7	29.5	23.1

(continued)



**Table 11**  
**2007 HOS-M: Functional status by plan and 2007 Medicaid status (proportions)**  
**Community residing non-ESRD respondents<sup>1</sup> aged 55+<sup>2</sup>**

Plan type	Plan name	# of respondents	Mean # of ADLs			No ADLs			1-2 ADLs			3-4 ADLs			5-6 ADLs		
			Total	Non-Medicaid <sup>4</sup>		Total	Non-Medicaid		Total	Non-Medicaid		Total	Non-Medicaid		Total	Non-Medicaid	
				enrollees	enrollees		enrollees	enrollees		enrollees	enrollees		enrollees	enrollees		enrollees	enrollees
			%	%	%	%	%	%	%	%	%	%	%	%	%	%	
PACE	Plan JJ	165	3.3	3.3	3.7	17.0	16.7	22.2	20.0	20.5	11.1	24.2	25.0	11.1	38.8	37.8	55.6
PACE	Plan KK	45	2.9	2.7	3.4	11.1	11.1	11.1	35.6	38.9	22.2	28.9	30.6	22.2	24.4	19.4	44.4
PACE	Plan LL	41	4.1	4.0	4.3	4.9	7.7	0.0	14.6	15.4	13.3	26.8	23.1	33.3	53.7	53.8	53.3
PACE	Plan MM	154	4.3	4.3	0.0	4.5	4.5	0.0	15.6	15.6	0.0	20.1	20.1	0.0	59.7	59.7	0.0
PACE	Plan NN	136	4.0	4.1	3.2	7.4	6.8	10.5	16.2	13.7	31.6	26.5	27.4	21.1	50.0	52.1	36.8
PACE	Plan OO	89	2.6	2.6	2.2	23.6	21.7	50.0	31.5	32.5	16.7	21.3	22.9	0.0	23.6	22.9	33.3
PACE	Plan PP	444	3.4	3.4	2.6	15.3	14.3	33.3	23.4	23.8	16.7	20.9	21.0	20.8	40.3	41.0	29.2
PACE	Plan QQ	121	3.9	3.9	5.3	5.8	5.9	0.0	19.0	19.5	0.0	23.1	22.9	33.3	52.1	51.7	66.7
Dual-WI	Plan RR	67	3.6	3.6	3.6	10.4	8.3	28.6	19.4	21.7	0.0	29.9	30.0	28.6	40.3	40.0	42.9
Dual-WI	Plan SS	506	2.7	2.7	3.5	21.5	21.8	15.0	28.3	28.6	20.0	24.5	24.3	30.0	25.7	25.3	35.0
Dual-WI	Plan TT	114	3.2	3.1	3.5	14.0	12.9	19.0	22.8	26.9	4.8	29.8	28.0	38.1	33.3	32.3	38.1
Dual-WI	Plan UU	344	2.8	2.9	2.5	18.9	18.9	18.8	28.8	28.0	43.8	22.4	23.2	6.3	29.9	29.9	31.3
PACE	Plan VV	420	3.0	3.0	3.5	15.7	15.9	13.9	28.3	29.2	19.4	25.0	24.7	27.8	31.0	30.2	38.9
PACE	Plan WW	143	3.7	3.7	2.5	11.9	10.9	33.3	18.9	18.2	33.3	20.3	21.2	0.0	49.0	49.6	33.3
PACE	Plan XX	678	3.3	3.3	3.2	13.7	13.6	20.0	26.3	26.5	10.0	20.6	20.4	40.0	39.4	39.5	30.0
PACE	Plan YY	215	3.1	3.1	3.0	14.4	14.6	0.0	32.1	32.1	33.3	16.7	16.0	66.7	36.7	37.3	0.0
PACE	Plan ZZ	93	3.6	3.5	6.0	12.9	13.0	0.0	18.3	18.5	0.0	28.0	28.3	0.0	40.9	40.2	100.0

NOTES:

<sup>1</sup> Respondents are defined as eligibles who completed all 6 ADL questions (items 4a-4f).

<sup>2</sup> SCO participants are aged 65+.

<sup>3</sup> Sampled plans, where contact information was not collected.

<sup>4</sup> Medicaid is defined as having at least one month of Medicaid enrollment in 2006 or a presence of Medicaid flag on 2007 midyear IMB-model file; flag received from CMS/FU Associates.

SOURCE: RTI analysis of the 2007 HOS-M survey.

Computer Output: hosm2007\_01\_mcaid\_cnt\_edited.xls

**Table 12**  
**2007 HOS-M: Functional status by plan and 2007 Medicaid status (frequencies)**  
**Community residing non-ESRD respondents<sup>1</sup> aged 55+<sup>2</sup>**

Plan type	Plan name	# of Respondents			Mean # of ADLs			No ADLs			1-2 ADLs			3-4 ADLs			5-6 ADLs		
		Total	Medicaid <sup>1</sup> enrollees	Non-Medicaid enrollees	Total	Medicaid enrollees	Non-Medicaid enrollees	Total	Medicaid enrollees	Non-Medicaid enrollees	Total	Medicaid enrollees	Non-Medicaid enrollees	Total	Medicaid enrollees	Non-Medicaid enrollees	Total	Medicaid enrollees	Non-Medicaid enrollees
TOTAL SAMPLE		14,877	14,134	743	2.7	2.6	3.3	3,585	3,470	115	4,090	3,928	162	3,082	2,900	182	4,120	3,836	284
PACE TOTAL		6,651	6,077	574	3.4	3.4	3.3	881	789	92	1,566	1,441	125	1,592	1,451	141	2,612	2,396	216
DUAL ELIGIBLE DEMOS TOTAL		8,226	8,057	169	2.1	2.1	3.5	2,704	2,681	23	2,524	2,487	37	1,490	1,449	41	1,508	1,440	68
MSHO/MnDHO TOTAL		5,224	5,125	99	2.0	1.9	3.5	1,830	1,819	11	1,646	1,622	24	895	872	23	853	812	41
WPP TOTAL		1,031	967	64	2.9	2.8	3.2	197	185	12	281	269	12	255	238	17	298	275	23
SCO TOTAL		1,971	1,965	6	2.0	2.0	4.7	677	677	0	597	596	1	340	339	1	357	353	4
PACE	Plan A	191	191	0	3.1	3.1	0.0	37	37	0	41	41	0	46	46	0	67	67	0
PACE	Plan B	509	483	26	2.9	2.9	3.0	85	82	3	143	133	10	134	129	5	147	139	8
PACE	Plan C	69	68	1	3.6	3.6	6.0	7	7	0	14	14	0	17	17	0	31	30	1
PACE	Plan D	95	93	2	3.2	3.2	4.0	10	10	0	25	25	0	27	25	2	33	33	0
PACE	Plan E	57	55	2	3.9	3.9	3.5	2	2	0	13	12	1	15	15	0	27	26	1
PACE	Plan F	95	61	34	3.0	3.3	2.6	15	7	8	26	15	11	22	17	5	32	22	10
PACE	Plan G	207	195	12	4.1	4.1	3.8	14	13	1	27	26	1	55	51	4	111	105	6
PACE	Plan H	60	54	6	3.5	3.6	2.7	6	5	1	12	10	2	22	20	2	20	19	1
PACE	Plan I	49	42	7	2.3	2.4	2.1	13	11	2	15	14	1	12	8	4	9	9	0
PACE	Plan J	207	178	29	2.8	2.8	2.6	40	32	8	62	55	7	50	44	6	55	47	8
PACE	Plan K	166	140	26	3.5	3.5	3.6	14	10	4	43	41	2	46	36	10	63	53	10
SCO-MASS	Plan L <sup>3</sup>	680	676	4	1.9	1.9	4.5	251	251	0	216	215	1	106	105	1	107	105	2
SCO-MASS	Plan M	526	525	1	2.6	2.6	5.0	138	138	0	133	133	0	111	111	0	144	143	1
SCO-MASS	Plan N <sup>3</sup>	765	764	1	1.8	1.8	5.0	288	288	0	248	248	0	123	123	0	106	105	1
PACE	Plan O	74	41	33	3.7	3.9	3.3	9	4	5	13	5	8	21	12	9	31	20	11
Dual-Mn	Plan P	50	46	4	3.4	3.2	5.8	8	8	0	11	11	0	11	11	0	20	16	4
Dual-Mn	Plan Q <sup>3</sup>	725	717	8	1.7	1.7	4.0	290	290	0	221	220	1	129	125	4	85	82	3
Dual-Mn	Plan R	202	200	2	2.1	2.1	3.0	56	56	0	77	76	1	33	32	1	36	36	0
Dual-Mn	Plan S <sup>3</sup>	760	746	14	1.8	1.8	2.2	263	261	2	260	253	7	138	134	4	99	98	1
Dual-Mn	Plan T <sup>3</sup>	492	484	8	2.2	2.2	2.8	175	174	1	140	137	3	58	56	2	119	117	2
Dual-Mn	Plan U	374	345	29	2.1	2.0	4.1	110	108	2	124	119	5	72	64	8	68	54	14
Dual-Mn	Plan V <sup>3</sup>	788	769	19	2.0	2.0	3.5	253	249	4	257	254	3	148	147	1	130	119	11
Dual-Mn	Plan W <sup>3</sup>	714	707	7	2.0	2.0	3.0	252	251	1	218	216	2	119	117	2	125	123	2
Dual-Mn	Plan X	354	354	0	1.8	1.8	0.0	138	138	0	109	109	0	62	62	0	45	45	0
Dual-Mn	Plan Y <sup>3</sup>	765	757	8	1.9	1.9	3.8	285	284	1	229	227	2	125	124	1	126	122	4
PACE	Plan Z	81	79	2	3.5	3.4	5.5	11	11	0	18	18	0	14	14	0	38	36	2
PACE	Plan AA	201	121	80	3.7	3.9	3.2	17	7	10	42	23	19	54	31	23	88	60	28
PACE	Plan BB	36	27	9	4.8	4.6	5.4	0	0	0	5	5	0	7	6	1	24	16	8
PACE	Plan CC <sup>3</sup>	710	681	29	3.3	3.3	3.2	108	101	7	152	147	5	182	176	6	268	257	11
PACE	Plan DD	146	125	21	3.8	3.8	3.7	15	11	4	26	24	2	33	28	5	72	62	10
PACE	Plan EE	124	117	7	3.6	3.6	3.6	11	10	1	30	28	2	31	30	1	52	49	3
PACE	Plan FF	182	170	12	2.6	2.6	2.8	29	28	1	63	58	5	52	48	4	38	36	2
PACE	Plan GG	397	365	32	4.0	4.0	4.0	33	30	3	70	65	5	78	73	5	216	197	19
PACE	Plan HH	143	93	50	3.3	3.3	3.2	22	14	8	29	18	11	37	25	12	55	36	19
PACE	Plan II	108	95	13	3.0	3.1	2.6	16	15	1	31	25	6	30	27	3	31	28	3
PACE	Plan JJ	165	156	9	3.3	3.3	3.7	28	26	2	33	32	1	40	39	1	64	59	5
PACE	Plan KK	45	36	9	2.9	2.7	3.4	5	4	1	16	14	2	13	11	2	11	7	4
PACE	Plan LL	41	26	15	4.1	4.0	4.3	2	2	0	6	4	2	11	6	5	22	14	8

(continued)

**Table 12**  
**2007 HOS-M: Functional status by plan and 2007 Medicaid status (frequencies)**  
**Community residing non-ESRD respondents<sup>1</sup> aged 55+<sup>2</sup>**

Plan type	Plan name	# of respondents			Mean # of ADLs			No ADLs			1-2 ADLs			3-4 ADLs			5-6 ADLs		
		Total	Medicaid <sup>4</sup> enrollees	Non-Medicaid enrollees	Total	Medicaid enrollees	Non-Medicaid enrollees	Total	Medicaid enrollees	Non-Medicaid enrollees	Total	Medicaid enrollees	Non-Medicaid enrollees	Total	Medicaid enrollees	Non-Medicaid enrollees	Total	Medicaid enrollees	Non-Medicaid enrollees
PACE	Plan MM	154	154	0	4.3	4.3	0.0	7	7	0	24	24	0	31	31	0	92	92	0
PACE	Plan NN	136	117	19	4.0	4.1	3.2	10	8	2	22	16	6	36	32	4	68	61	7
PACE	Plan OO	89	83	6	2.6	2.6	2.2	21	18	3	28	27	1	19	19	0	21	19	2
PACE	Plan PP	444	420	24	3.4	3.4	2.6	68	60	8	104	100	4	93	88	5	179	172	7
PACE	Plan QQ	121	118	3	3.9	3.9	5.3	7	7	0	23	23	0	28	27	1	63	61	2
Dual-WI	Plan RR	67	60	7	3.6	3.6	3.6	7	5	2	13	13	0	20	18	2	27	24	3
Dual-WI	Plan SS	506	486	20	2.7	2.7	3.5	109	106	3	143	139	4	124	118	6	130	123	7
Dual-WI	Plan TT	114	93	21	3.2	3.1	3.5	16	12	4	26	25	1	34	26	8	38	30	8
Dual-WI	Plan UU	344	328	16	2.8	2.9	2.5	65	62	3	99	92	7	77	76	1	103	98	5
PACE	Plan VV	420	384	36	3.0	3.0	3.5	66	61	5	119	112	7	105	95	10	130	116	14
PACE	Plan WW	143	137	6	3.7	3.7	2.5	17	15	2	27	25	2	29	29	0	70	68	2
PACE	Plan XX	678	668	10	3.3	3.3	3.2	93	91	2	178	177	1	140	136	4	267	264	3
PACE	Plan YY	215	212	3	3.1	3.1	3.0	31	31	0	69	68	1	36	34	2	79	79	0
PACE	Plan ZZ	93	92	1	3.6	3.5	6.0	12	12	0	17	17	0	26	26	0	38	37	1

NOTES:

<sup>1</sup> Respondents are defined as eligibles who completed all 6 ADL questions (items 4a-4f).

<sup>2</sup> SCO participants are aged 65+.

<sup>3</sup> Sampled plans, where contact information was not collected.

<sup>4</sup> Medicaid is defined as having at least one month of Medicaid enrollment in 2006 or a presence of Medicaid flag on 2007 midyear IMB-model file; flag received from CMS/FU Associates.

SOURCE: RTI analysis of the 2007 HOS-M survey.

Computer Output: hosm2007\_01\_mcaid\_cnt\_edited.xls

**Table 13**  
**2007 HOS-M: ADL impairment by plan**  
**Community-residing non-ESRD respondents<sup>1</sup> aged 55+<sup>2</sup>**

Plan type	Plan name	Bathing	Dressing	Walking	Transferring	Toileting	Eating
		%	%	%	%	%	%
TOTAL SAMPLE		53.6	41.6	68.3	51.7	32.8	18.0
PACE TOTAL		69.3	56.4	78.5	62.0	46.1	24.6
DUAL ELIGIBLE DEMOS TOTAL		41.0	29.6	60.0	43.3	22.0	12.7
MSHO/MnDHO TOTAL		38.6	26.4	57.4	41.0	20.0	11.5
WPP TOTAL		59.8	44.7	74.2	55.7	33.5	17.7
SCO TOTAL		37.2	30.0	59.4	43.1	21.3	13.2
PACE	Plan A	59.7	52.9	72.8	61.3	44.0	20.4
PACE	Plan B	61.5	45.0	76.6	56.2	34.8	18.5
PACE	Plan C	78.3	71.0	73.9	56.5	53.6	29.0
PACE	Plan D	67.4	48.4	83.2	65.3	41.1	18.9
PACE	Plan E	77.2	70.2	86.0	70.2	59.6	29.8
PACE	Plan F	74.7	52.6	64.2	49.5	43.2	20.0
PACE	Plan G	83.6	74.4	84.1	73.4	62.8	34.3
PACE	Plan H	68.3	61.7	88.3	66.7	38.3	28.3
PACE	Plan I	55.1	34.7	67.3	44.9	26.5	6.1
PACE	Plan J	61.8	45.4	70.5	47.8	32.9	18.4
PACE	Plan K	78.9	62.0	82.5	56.6	44.0	24.7
SCO	Plan L <sup>3</sup>	34.0	26.9	58.4	39.4	19.3	11.2
SCO	Plan M	51.1	40.7	67.3	51.7	29.5	18.3
SCO	Plan N <sup>3</sup>	30.6	25.5	54.8	40.5	17.5	11.6
PACE	Plan O	75.7	64.9	83.8	67.6	45.9	28.4
MSHO/MnDHO	Plan P	66.0	52.0	78.0	70.0	44.0	26.0
MSHO/MnDHO	Plan Q <sup>3</sup>	37.2	21.0	52.1	36.7	14.8	7.9
MSHO/MnDHO	Plan R	37.1	25.2	63.4	48.5	24.3	9.4
MSHO/MnDHO	Plan S <sup>3</sup>	38.2	23.6	56.2	38.4	19.1	8.7
MSHO/MnDHO	Plan T <sup>3</sup>	40.2	32.3	58.9	42.7	25.4	18.9
MSHO/MnDHO	Plan U	43.6	28.9	59.6	46.3	20.9	14.7
MSHO/MnDHO	Plan V <sup>3</sup>	41.5	27.3	60.5	42.5	20.3	9.1
MSHO/MnDHO	Plan W <sup>3</sup>	37.8	27.0	58.4	41.5	21.1	13.0
MSHO/MnDHO	Plan X	31.9	25.7	54.5	39.0	16.9	12.1
MSHO/MnDHO	Plan Y <sup>3</sup>	36.6	27.1	55.9	38.8	19.6	11.8

(continued)

**Table 13 (continued)**  
**2007 HOS-M: ADL impairment by plan**  
**Community-residing non-ESRD respondents<sup>1</sup> aged 55+<sup>2</sup>**

Plan type	Plan name	Bathing	Dressing	Walking	Transferring	Toileting	Eating
		%	%	%	%	%	%
PACE	Plan Z	75.3	55.6	79.0	64.2	50.6	23.5
PACE	Plan AA	78.6	63.2	82.1	64.7	48.8	28.4
PACE	Plan BB	91.7	83.3	97.2	86.1	75.0	44.4
PACE	Plan CC <sup>3</sup>	64.6	56.9	80.6	62.8	43.5	24.1
PACE	Plan DD	78.8	70.5	82.2	67.1	52.1	28.1
PACE	Plan EE	75.0	62.1	74.2	67.7	50.8	25.8
PACE	Plan FF	57.1	34.1	76.4	56.6	27.5	9.3
PACE	Plan GG	79.6	66.2	81.6	68.0	62.0	38.0
PACE	Plan HH	67.8	58.0	78.3	61.5	43.4	21.7
PACE	Plan II	58.3	51.9	75.9	61.1	35.2	17.6
PACE	Plan JJ	69.1	55.2	77.0	66.7	40.6	20.0
PACE	Plan KK	57.8	48.9	75.6	66.7	20.0	17.8
PACE	Plan LL	80.5	70.7	90.2	78.0	58.5	36.6
PACE	Plan MM	87.0	79.2	85.7	74.0	65.6	37.7
PACE	Plan NN	79.4	66.9	81.6	77.2	61.0	32.4
PACE	Plan OO	43.8	34.8	70.8	61.8	32.6	16.9
PACE	Plan PP	60.6	54.3	79.1	65.3	48.0	28.4
PACE	Plan QQ	87.6	67.8	85.1	66.9	60.3	24.0
WPP	Plan RR	73.1	62.7	85.1	68.7	41.8	31.3
WPP	Plan SS	57.5	40.5	72.1	54.3	30.0	15.4
WPP	Plan TT	66.7	54.4	80.7	59.6	38.6	16.7
WPP	Plan UU	58.4	44.2	73.0	53.8	35.2	18.9
PACE	Plan VV	63.6	49.8	75.2	59.3	36.7	17.4
PACE	Plan WW	74.1	63.6	81.8	67.1	52.4	28.0
PACE	Plan XX	70.8	52.7	77.6	55.0	48.4	24.6
PACE	Plan YY	65.6	49.8	71.2	51.2	47.0	24.7
PACE	Plan ZZ	74.2	66.7	77.4	66.7	46.2	24.7

NOTES:

<sup>1</sup> Respondents are defined as eligibles who completed all 6 ADL questions (items 4a-4f).

<sup>2</sup> SCO participants are aged 65+.

<sup>3</sup> Sampled plans, where contact information was not collected.

SOURCE: RTI analysis of the 2007 HOS-M survey.

Computer Output: hosm2007\_06.xls

**Table 14**  
**2007 HOS-M: ADL counts by plan**  
**Community-residing non-ESRD respondents<sup>1</sup> aged 55+<sup>2</sup>**

Plan type	Plan name	No	1	2	3	4	5	6
		ADLs	ADL	ADLs	ADLs	ADLs	ADLs	ADLs
		%	%	%	%	%	%	%
TOTAL SAMPLE		24.1	13.9	13.6	10.4	10.3	13.8	13.9
PACE TOTAL		13.2	11.1	12.4	11.4	12.6	19.2	20.1
DUAL ELIGIBLE DEMOS TOTAL		32.9	16.1	14.6	9.6	8.5	9.5	8.8
MSHO/MnDHO TOTAL		35.0	16.7	14.8	9.3	7.8	8.4	7.9
WPP TOTAL		19.1	13.9	13.4	11.8	12.9	15.5	13.4
SCO TOTAL		34.3	15.6	14.7	9.1	8.1	9.2	8.9
PACE	Plan A	19.4	8.9	12.6	11.0	13.1	18.8	16.2
PACE	Plan B	16.7	13.2	14.9	13.0	13.4	16.1	12.8
PACE	Plan C	10.1	8.7	11.6	15.9	8.7	21.7	23.2
PACE	Plan D	10.5	10.5	15.8	17.9	10.5	22.1	12.6
PACE	Plan E	3.5	10.5	12.3	12.3	14.0	19.3	28.1
PACE	Plan F	15.8	12.6	14.7	12.6	10.5	20.0	13.7
PACE	Plan G	6.8	5.3	7.7	12.1	14.5	24.2	29.5
PACE	Plan H	10.0	6.7	13.3	13.3	23.3	15.0	18.3
PACE	Plan I	26.5	8.2	22.4	14.3	10.2	12.2	6.1
PACE	Plan J	19.3	15.5	14.5	9.7	14.5	14.0	12.6
PACE	Plan K	8.4	11.4	14.5	11.4	16.3	18.7	19.3
SCO	Plan L <sup>3</sup>	36.9	15.4	16.3	7.9	7.6	7.8	7.9
SCO	Plan M	26.2	14.1	11.2	10.8	10.3	15.8	11.6
SCO	Plan N <sup>3</sup>	37.6	16.7	15.7	9.0	7.1	6.0	7.8
PACE	Plan O	12.2	8.1	9.5	10.8	17.6	14.9	27.0
MSHO/MnDHO	Plan P	16.0	10.0	12.0	12.0	10.0	14.0	26.0
MSHO/MnDHO	Plan Q <sup>3</sup>	40.0	15.0	15.4	10.2	7.6	7.6	4.1
MSHO/MnDHO	Plan R	27.7	19.8	18.3	9.9	6.4	10.9	6.9
MSHO/MnDHO	Plan S <sup>3</sup>	34.6	19.3	14.9	8.8	9.3	7.0	6.1
MSHO/MnDHO	Plan T <sup>3</sup>	35.6	15.2	13.2	6.7	5.1	8.7	15.4
MSHO/MnDHO	Plan U	29.4	18.4	14.7	10.4	8.8	9.6	8.6
MSHO/MnDHO	Plan V <sup>3</sup>	32.1	17.4	15.2	10.4	8.4	10.3	6.2
MSHO/MnDHO	Plan W <sup>3</sup>	35.3	15.1	15.4	9.5	7.1	9.2	8.3
MSHO/MnDHO	Plan X	39.0	14.7	16.1	8.2	9.3	4.8	7.9
MSHO/MnDHO	Plan Y <sup>3</sup>	37.3	17.3	12.7	9.2	7.2	7.8	8.6

(continued)

**Table 14 (continued)**  
**2007 HOS-M: ADL counts by plan**  
**Community-residing non-ESRD respondents<sup>1</sup> aged 55+<sup>2</sup>**

Plan type	Plan name	No	1	2	3	4	5	6
		ADLs	ADL	ADLs	ADLs	ADLs	ADLs	ADLs
		%	%	%	%	%	%	%
PACE	Plan Z	13.6	8.6	13.6	11.1	6.2	27.2	19.8
PACE	Plan AA	8.5	9.0	11.9	15.9	10.9	21.4	22.4
PACE	Plan BB	0.0	2.8	11.1	2.8	16.7	22.2	44.4
PACE	Plan CC <sup>3</sup>	15.2	11.1	10.3	10.7	14.9	17.5	20.3
PACE	Plan DD	10.3	9.6	8.2	8.9	13.7	24.7	24.7
PACE	Plan EE	8.9	11.3	12.9	11.3	13.7	21.8	20.2
PACE	Plan FF	15.9	16.5	18.1	17.0	11.5	14.3	6.6
PACE	Plan GG	8.3	10.8	6.8	11.1	8.6	22.9	31.5
PACE	Plan HH	15.4	10.5	9.8	12.6	13.3	21.0	17.5
PACE	Plan II	14.8	12.0	16.7	12.0	15.7	16.7	12.0
PACE	Plan JJ	17.0	7.3	12.7	12.1	12.1	21.8	17.0
PACE	Plan KK	11.1	11.1	24.4	15.6	13.3	20.0	4.4
PACE	Plan LL	4.9	4.9	9.8	12.2	14.6	26.8	26.8
PACE	Plan MM	4.5	4.5	11.0	9.1	11.0	27.3	32.5
PACE	Plan NN	7.4	6.6	9.6	12.5	14.0	20.6	29.4
PACE	Plan OO	23.6	10.1	21.3	9.0	12.4	10.1	13.5
PACE	Plan PP	15.3	11.7	11.7	9.2	11.7	16.0	24.3
PACE	Plan QQ	5.8	9.1	9.9	11.6	11.6	30.6	21.5
WPP	Plan RR	10.4	9.0	10.4	11.9	17.9	16.4	23.9
WPP	Plan SS	21.5	13.2	15.0	11.1	13.4	14.4	11.3
WPP	Plan TT	14.0	14.0	8.8	14.0	15.8	20.2	13.2
WPP	Plan UU	18.9	15.7	13.1	12.2	10.2	15.4	14.5
PACE	Plan VV	15.7	13.1	15.2	10.7	14.3	16.7	14.3
PACE	Plan WW	11.9	10.5	8.4	8.4	11.9	26.6	22.4
PACE	Plan XX	13.7	13.3	13.0	11.1	9.6	18.0	21.4
PACE	Plan YY	14.4	17.2	14.9	7.9	8.8	17.2	19.5
PACE	Plan ZZ	12.9	6.5	11.8	8.6	19.4	22.6	18.3

NOTES:

<sup>1</sup> Respondents are defined as eligibles who completed all 6 ADL questions (items 4a-4f).

<sup>2</sup> SCO participants are aged 65+.

<sup>3</sup> Sampled plans, where contact information was not collected.

SOURCE: RTI analysis of the 2007 HOS-M survey.

Computer Output: hosm2007\_07.xls

**Table 15**  
**2007 HOS-M: VR-12 Physical (PCS) and Mental (MCS) Component mean unadjusted scores by plan**  
**Community-residing non-ESRD respondents<sup>1</sup> aged 55+<sup>2</sup>**

Plan type	Plan name	VR-12 respondents		
		N	PCS <sup>4</sup>	MCS <sup>4</sup>
	TOTAL SAMPLE	12,193	31.0	46.0
	PACE TOTAL	5,392	28.8	43.4
	DUAL ELIGIBLE DEMOS TOTAL	6,801	32.7	48.0
	MSHO/MnDHO TOTAL	4,402	33.0	49.6
	WPP TOTAL	847	29.4	46.0
	SCO TOTAL	1,552	33.8	44.7
PACE	Plan A	159	31.8	39.6
PACE	Plan B	413	29.0	44.3
PACE	Plan C	52	30.5	40.9
PACE	Plan D	75	26.9	42.4
PACE	Plan E	49	26.8	42.4
PACE	Plan F	77	31.0	45.5
PACE	Plan G	175	27.5	42.7
PACE	Plan H	46	30.3	45.1
PACE	Plan I	32	28.6	46.6
PACE	Plan J	176	30.3	43.6
PACE	Plan K	123	29.0	42.5
SCO	Plan L <sup>3</sup>	561	33.8	46.4
SCO	Plan M	402	32.4	42.3
SCO	Plan N <sup>3</sup>	589	34.7	44.8
PACE	Plan O	54	29.2	44.6
MSHO/MnDHO	Plan P	40	26.0	45.2
MSHO/MnDHO	Plan Q <sup>3</sup>	624	33.7	51.0
MSHO/MnDHO	Plan R	163	30.7	48.5
MSHO/MnDHO	Plan S <sup>3</sup>	646	33.2	50.8
MSHO/MnDHO	Plan T <sup>3</sup>	411	33.7	48.0
MSHO/MnDHO	Plan U	315	32.4	48.6
MSHO/MnDHO	Plan V <sup>3</sup>	677	32.8	49.4
MSHO/MnDHO	Plan W <sup>3</sup>	611	33.2	49.7
MSHO/MnDHO	Plan X	281	33.8	48.1
MSHO/MnDHO	Plan Y <sup>3</sup>	634	32.7	49.7

(continued)



**Table 15 (continued)**  
**2007 HOS-M: VR-12 Physical (PCS) and Mental (MCS) Component mean unadjusted scores by plan**  
**Community-residing non-ESRD respondents<sup>1</sup> aged 55+<sup>2</sup>**

Plan type	Plan name	VR-12 respondents		
		N	PCS <sup>4</sup>	MCS <sup>4</sup>
PACE	Plan Z	72	31.2	44.9
PACE	Plan AA	174	28.1	45.4
PACE	Plan BB	25	25.8	39.7
PACE	Plan CC <sup>3</sup>	572	28.2	41.2
PACE	Plan DD	113	28.7	44.0
PACE	Plan EE	100	28.6	45.8
PACE	Plan FF	136	28.4	45.7
PACE	Plan GG	311	28.6	45.9
PACE	Plan HH	109	29.7	45.6
PACE	Plan II	92	28.9	44.8
PACE	Plan JJ	134	28.8	43.7
PACE	Plan KK	34	30.1	43.1
PACE	Plan LL	30	26.3	44.0
PACE	Plan MM	119	26.7	41.0
PACE	Plan NN	105	25.2	40.8
PACE	Plan OO	75	27.6	48.0
PACE	Plan PP	340	28.9	39.3
PACE	Plan QQ	109	28.4	45.3
WPP	Plan RR	62	26.7	42.6
WPP	Plan SS	416	29.5	47.4
WPP	Plan TT	88	29.0	42.2
WPP	Plan UU	281	29.9	45.8
PACE	Plan VV	329	29.3	45.1
PACE	Plan WW	112	27.1	42.6
PACE	Plan XX	607	28.8	43.0
PACE	Plan YY	183	31.5	44.8
PACE	Plan ZZ	80	28.9	44.2

NOTES:

<sup>1</sup> Respondents are defined as eligibles who completed all 6 ADL questions (items 4a-4f).

<sup>2</sup> SCO participants are aged 65+.

<sup>3</sup> Sampled plans, where contact information was not collected.

<sup>4</sup> VR-12 PCS and MCS scores are not adjusted for case-mix.

SOURCE: RTI analysis of the 2007 HOS-M survey.

Computer Output: hosm2007\_08.xls

**Table 16**  
**2007 HOS-M: Respondent<sup>1</sup> type by plan**  
**Community-residing non-ESRD respondents aged 55+<sup>2</sup>**

Plan type	Plan name	Self	Proxy		Proxy information missing
			Family	Health professional	
		%	%	%	%
TOTAL SAMPLE		36.3	37.4	10.0	16.3
PACE TOTAL		26.6	45.1	15.6	12.7
DUAL ELIGIBLE DEMOS TOTAL		44.1	31.2	5.4	19.3
MSHO/MnDHO TOTAL		47.3	26.6	6.0	20.1
WPP TOTAL		39.6	36.7	3.4	20.4
SCO TOTAL		37.9	40.6	4.8	16.7
PACE	Plan A	22.0	42.4	21.5	14.1
PACE	Plan B	36.1	43.6	6.7	13.6
PACE	Plan C	11.6	66.7	13.0	8.7
PACE	Plan D	36.8	41.1	8.4	13.7
PACE	Plan E	12.3	68.4	8.8	10.5
PACE	Plan F	7.4	83.2	1.1	8.4
PACE	Plan G	13.5	72.0	6.3	8.2
PACE	Plan H	25.0	58.3	8.3	8.3
PACE	Plan I	46.9	32.7	2.0	18.4
PACE	Plan J	29.0	44.4	17.4	9.2
PACE	Plan K	31.3	50.0	7.2	11.4
SCO	Plan L <sup>3</sup>	34.4	45.0	2.6	17.9
SCO	Plan M	38.0	37.3	7.4	17.3
SCO	Plan N <sup>3</sup>	40.9	39.0	5.0	15.2
PACE	Plan O	18.9	68.9	8.1	4.1
MSHO/MnDHO	Plan P	64.0	18.0	6.0	12.0
MSHO/MnDHO	Plan Q <sup>3</sup>	46.5	21.8	6.6	25.1
MSHO/MnDHO	Plan R	53.5	20.3	5.0	21.3
MSHO/MnDHO	Plan S <sup>3</sup>	47.4	26.4	8.0	18.2
MSHO/MnDHO	Plan T <sup>3</sup>	41.3	36.2	4.3	18.3
MSHO/MnDHO	Plan U	43.3	32.6	5.1	19.0
MSHO/MnDHO	Plan V <sup>3</sup>	47.7	27.4	5.7	19.2
MSHO/MnDHO	Plan W <sup>3</sup>	47.9	26.2	6.3	19.6
MSHO/MnDHO	Plan X	50.0	21.8	5.9	22.3
MSHO/MnDHO	Plan Y <sup>3</sup>	48.9	26.4	5.2	19.5

(continued)

**Table 16 (continued)**  
**2007 HOS-M: Respondent<sup>1</sup> type by plan**  
**Community-residing non-ESRD respondents aged 55+<sup>2</sup>**

Plan type	Plan name	Self	Proxy		Proxy information missing
			Family	Health professional	
		%	%	%	%
PACE	Plan Z	18.5	55.6	12.3	13.6
PACE	Plan AA	25.4	43.8	15.4	15.4
PACE	Plan BB	27.8	47.2	11.1	13.9
PACE	Plan CC <sup>3</sup>	27.9	32.1	28.6	11.4
PACE	Plan DD	21.2	55.5	12.3	11.0
PACE	Plan EE	29.8	54.8	4.0	11.3
PACE	Plan FF	49.5	25.3	5.5	19.8
PACE	Plan GG	26.2	26.7	35.0	12.1
PACE	Plan HH	30.1	49.0	8.4	12.6
PACE	Plan II	14.8	67.6	8.3	9.3
PACE	Plan JJ	30.3	43.6	13.9	12.1
PACE	Plan KK	26.7	53.3	8.9	11.1
PACE	Plan LL	24.4	61.0	9.8	4.9
PACE	Plan MM	9.1	81.8	1.3	7.8
PACE	Plan NN	16.9	65.4	5.1	12.5
PACE	Plan OO	29.2	42.7	15.7	12.4
PACE	Plan PP	20.7	57.4	5.9	16.0
PACE	Plan QQ	20.7	21.5	44.6	13.2
WPP	Plan RR	55.2	20.9	4.5	19.4
WPP	Plan SS	38.7	35.6	3.2	22.5
WPP	Plan TT	36.0	42.1	3.5	18.4
WPP	Plan UU	39.0	39.5	3.5	18.0
PACE	Plan VV	36.0	32.9	14.8	16.4
PACE	Plan WW	34.3	51.7	7.0	7.0
PACE	Plan XX	24.5	38.8	20.2	16.5
PACE	Plan YY	24.2	35.3	31.6	8.8
PACE	Plan ZZ	32.3	43.0	16.1	8.6

NOTES:

<sup>1</sup> Respondents are defined as eligibles who completed all 6 ADL questions (items 4a-4f).

<sup>2</sup> SCO participants are aged 65+.

<sup>3</sup> Sampled plans, where contact information was not collected.

SOURCE: RTI analysis of the 2007 HOS-M survey.

Computer Output: hosm2007\_09.xls

**Table 17**  
**2007 HOS-M: Reasons for proxy respondents by plan**  
**Community-residing non-ESRD respondents<sup>1</sup> aged 55+<sup>2</sup>**

Plan type	Plan name	Physical	Memory loss or Mental	Unable to to	Person not	Other reason
		Health	health problems	speak or read English	available	
		%	%	%	%	%
TOTAL SAMPLE		40.1	40.2	23.2	12.0	33.5
PACE TOTAL		46.9	48.7	17.2	12.7	31.1
DUAL ELIGIBLE DEMOS TOTAL		30.7	32.0	23.8	11.2	40.1
MSHO/MnDHO TOTAL		46.0	40.0	11.2	15.0	34.2
WPP TOTAL		24.6	17.9	54.9	9.3	31.4
SCO TOTAL		31.0	29.0	31.2	11.2	36.7
PACE	Plan A	37.5	27.3	18.8	14.1	54.7
PACE	Plan B	43.1	60.7	9.2	19.1	31.3
PACE	Plan C	60.4	58.5	20.8	5.7	34.0
PACE	Plan D	49.0	42.9	6.1	18.4	38.8
PACE	Plan E	53.3	68.9	4.4	15.6	20.0
PACE	Plan F	28.6	60.7	9.5	14.3	31.0
PACE	Plan G	53.3	65.1	7.7	10.1	20.1
PACE	Plan H	42.5	52.5	32.5	20.0	22.5
PACE	Plan I	50.0	33.3	33.3	22.2	55.6
PACE	Plan J	32.8	49.2	18.8	14.8	31.3
PACE	Plan K	45.8	57.3	21.9	18.8	30.2
SCO	Plan L <sup>3</sup>	19.7	10.8	74.6	6.0	19.1
SCO	Plan M	35.5	28.2	42.1	12.0	39.4
SCO	Plan N <sup>3</sup>	21.3	17.5	44.3	10.8	37.9
PACE	Plan O	46.7	58.3	3.3	6.7	28.3
MSHO/MnDHO	Plan P	66.7	33.3	16.7	25.0	33.3
MSHO/MnDHO	Plan Q <sup>3</sup>	30.0	27.8	6.3	9.9	56.1
MSHO/MnDHO	Plan R	32.7	49.1	12.7	12.7	41.8
MSHO/MnDHO	Plan S <sup>3</sup>	31.3	33.5	9.4	11.9	45.7
MSHO/MnDHO	Plan T <sup>3</sup>	27.0	27.5	55.0	12.2	27.9
MSHO/MnDHO	Plan U	32.2	47.3	4.1	16.4	44.5
MSHO/MnDHO	Plan V <sup>3</sup>	27.3	30.6	15.5	12.2	43.9
MSHO/MnDHO	Plan W <sup>3</sup>	33.7	33.3	34.2	7.8	28.4
MSHO/MnDHO	Plan X	34.5	25.9	44.8	9.5	36.2
MSHO/MnDHO	Plan Y <sup>3</sup>	29.7	28.9	31.1	9.9	37.0

(continued)

**Table 17 (continued)**  
**2007 HOS-M: Reasons for proxy respondents by plan**  
**Community-residing non-ESRD respondents<sup>1</sup> aged 55+<sup>2</sup>**

Plan type	Plan name	Physical	Memory loss	Unable to to	Person not	Other reason
		Health	or Mental	speak or read	available	
		%	health	English	%	%
			problems			
PACE	Plan Z	41.7	56.7	11.7	13.3	30.0
PACE	Plan AA	45.7	54.3	8.5	9.3	30.2
PACE	Plan BB	78.3	39.1	8.7	4.3	26.1
PACE	Plan CC <sup>3</sup>	33.3	24.5	46.4	5.5	26.7
PACE	Plan DD	56.7	52.9	14.4	27.9	26.9
PACE	Plan EE	58.9	71.2	11.0	17.8	24.7
PACE	Plan FF	50.0	31.3	10.9	12.5	42.2
PACE	Plan GG	54.1	75.5	11.7	14.4	29.2
PACE	Plan HH	43.2	62.5	11.4	17.0	39.8
PACE	Plan II	35.4	41.5	13.4	12.2	35.4
PACE	Plan JJ	53.6	54.6	6.2	13.4	25.8
PACE	Plan KK	48.3	48.3	6.9	24.1	37.9
PACE	Plan LL	63.3	43.3	13.3	3.3	26.7
PACE	Plan MM	61.2	60.4	16.4	12.7	22.4
PACE	Plan NN	54.3	60.0	8.6	12.4	18.1
PACE	Plan OO	42.3	40.4	13.5	15.4	38.5
PACE	Plan PP	49.2	43.8	13.8	16.2	41.1
PACE	Plan QQ	45.1	53.8	9.9	20.9	18.7
WPP	Plan RR	75.0	50.0	30.0	5.0	45.0
WPP	Plan SS	43.4	34.4	6.1	19.8	34.9
WPP	Plan TT	43.9	56.1	3.5	5.3	36.8
WPP	Plan UU	46.5	40.3	18.2	13.2	30.8
PACE	Plan VV	50.9	47.7	6.9	12.5	33.8
PACE	Plan WW	61.6	66.3	9.3	18.6	34.9
PACE	Plan XX	48.9	31.3	25.0	4.8	31.3
PACE	Plan YY	37.1	44.1	18.9	9.8	37.1
PACE	Plan ZZ	67.2	63.8	5.2	19.0	27.6

<sup>1</sup> Respondents are defined as eligibles who completed all 6 ADL questions (items 4a-4f).

<sup>2</sup> SCO participants are aged 65+.

<sup>3</sup> Sampled plans, where contact information was not collected.

SOURCE: RTI analysis of the 2007 HOS-M survey.

Computer Output: hosm2007\_10.xls

**Table 18**  
**2007 HOS-M: Type of help provided by proxy respondents by plan**  
**Community-residing non-ESRD respondents<sup>1</sup> aged 55+<sup>2</sup>**

Plan type	Plan name	Read questions to sample member	Wrote down answers for sample member	Answered based on experience	Used medical records	Translated survey questions	Other
		%	%	%	%	%	%
TOTAL SAMPLE		39.5	26.3	66.9	8.5	8.8	2.4
PACE TOTAL		36.1	23.7	71.6	9.6	5.0	1.9
DUAL ELIGIBLE DEMOS TOTAL		42.7	30.6	62.1	7.1	10.5	2.5
MSHO/MnDHO TOTAL		30.4	23.0	75.0	6.1	3.4	2.0
WPP TOTAL		52.9	31.3	50.9	7.8	25.0	4.5
SCO TOTAL		44.0	29.7	60.5	7.1	13.8	3.0
PACE	Plan A	73.0	45.1	50.8	11.5	9.0	4.1
PACE	Plan B	28.9	22.5	79.4	8.7	1.2	0.8
PACE	Plan C	30.9	25.5	78.2	9.1	3.6	1.8
PACE	Plan D	27.7	21.3	80.9	6.4	0.0	2.1
PACE	Plan E	36.4	34.1	72.7	2.3	2.3	2.3
PACE	Plan F	13.8	8.8	90.0	10.0	1.3	0.0
PACE	Plan G	23.6	18.0	83.2	1.2	1.9	1.9
PACE	Plan H	25.0	15.0	82.5	12.5	2.5	2.5
PACE	Plan I	41.2	35.3	82.4	11.8	11.8	0.0
PACE	Plan J	50.8	32.0	61.7	11.7	4.7	3.9
PACE	Plan K	26.1	22.8	81.5	8.7	2.2	3.3
SCO	Plan L <sup>3</sup>	51.3	29.2	50.3	7.9	33.6	2.5
SCO	Plan M	49.1	34.8	56.5	8.3	19.1	5.7
SCO	Plan N <sup>3</sup>	57.2	30.8	47.4	7.4	20.6	5.5
PACE	Plan O	42.9	35.7	80.4	1.8	1.8	1.8
MSHO/MnDHO	Plan P	50.0	41.7	58.3	16.7	0.0	0.0
MSHO/MnDHO	Plan Q <sup>3</sup>	43.1	33.0	59.4	5.6	1.5	0.5
MSHO/MnDHO	Plan R	31.4	29.4	72.5	0.0	3.9	3.9
MSHO/MnDHO	Plan S <sup>3</sup>	43.4	31.4	66.7	7.4	1.9	3.1
MSHO/MnDHO	Plan T <sup>3</sup>	43.4	26.5	54.6	11.7	29.6	2.0
MSHO/MnDHO	Plan U	23.6	19.3	79.3	8.6	2.1	2.1
MSHO/MnDHO	Plan V <sup>3</sup>	44.9	33.9	64.2	4.7	6.7	2.0
MSHO/MnDHO	Plan W <sup>3</sup>	43.7	32.8	59.8	4.8	17.5	1.3
MSHO/MnDHO	Plan X	57.7	29.9	46.4	6.2	15.5	11.3
MSHO/MnDHO	Plan Y <sup>3</sup>	45.1	32.1	59.5	9.3	13.9	2.1

(continued)

**Table 18 (continued)**  
**2007 HOS-M: Type of help provided by proxy respondents by plan**  
**Community-residing non-ESRD respondents<sup>1</sup> aged 55+<sup>2</sup>**

Plan type	Plan name	Read questions to sample member	Wrote down answers for sample member	Answered based on experience	Used medical records	Translated survey questions	Other
		%	%	%	%	%	%
PACE	Plan Z	34.0	20.8	71.7	11.3	1.9	0.0
PACE	Plan AA	28.0	26.3	78.0	3.4	1.7	0.8
PACE	Plan BB	42.9	38.1	71.4	0.0	4.8	0.0
PACE	Plan CC <sup>3</sup>	55.4	28.6	48.7	9.1	18.9	2.1
PACE	Plan DD	28.2	22.4	83.5	10.6	0.0	4.7
PACE	Plan EE	16.9	12.7	87.3	15.5	0.0	1.4
PACE	Plan FF	46.4	25.0	62.5	7.1	1.8	1.8
PACE	Plan GG	26.6	18.0	82.0	23.8	0.4	0.4
PACE	Plan HH	30.0	22.5	80.0	6.3	1.3	0.0
PACE	Plan II	28.0	12.2	79.3	4.9	2.4	0.0
PACE	Plan JJ	29.8	20.2	81.9	2.1	1.1	1.1
PACE	Plan KK	37.0	18.5	77.8	11.1	11.1	3.7
PACE	Plan LL	31.0	20.7	75.9	6.9	3.4	0.0
PACE	Plan MM	20.5	11.0	88.2	7.9	0.8	1.6
PACE	Plan NN	21.9	11.5	82.3	0.0	2.1	0.0
PACE	Plan OO	46.0	32.0	64.0	8.0	0.0	4.0
PACE	Plan PP	46.7	27.0	67.0	10.4	5.2	3.7
PACE	Plan QQ	32.5	27.5	76.3	16.3	2.5	10.0
WPP	Plan RR	58.8	29.4	64.7	11.8	11.8	5.9
WPP	Plan SS	29.4	25.8	77.8	4.6	1.5	0.5
WPP	Plan TT	30.8	17.3	73.1	5.8	0.0	3.8
WPP	Plan UU	28.3	20.7	73.1	7.6	6.2	2.8
PACE	Plan VV	35.4	30.3	67.2	15.7	3.0	0.5
PACE	Plan WW	26.5	16.9	84.3	9.6	3.6	1.2
PACE	Plan XX	34.6	21.0	66.7	8.2	7.2	1.5
PACE	Plan YY	49.6	31.9	50.4	9.2	12.1	2.1
PACE	Plan ZZ	18.5	11.1	85.2	14.8	0.0	1.9

NOTES:

<sup>1</sup> Respondents are defined as eligibles who completed all 6 ADL questions (items 4a-4f).

<sup>2</sup> SCO participants are aged 65+.

<sup>3</sup> Sampled plans, where contact information was not collected.

SOURCE: RTI analysis of the 2007 HOS-M survey.

Computer Output: hosm2007\_11.xls

**Table 19**  
**2007 HOS-M: Survey language and language-related proxy information**  
**Community-residing non-ESRD respondents<sup>1</sup> aged 55+<sup>2</sup>**

Plan type	Plan name	Survey language			Language-related proxy information	
		English	Chinese	Spanish	Reason for proxy: unable to speak/read English <sup>4</sup>	Proxy role: translated survey questions <sup>5</sup>
TOTAL SAMPLE		84.8	3.9	11.3	23.7	8.7
PACE TOTAL		77.3	7.9	14.8	18.0	5.0
DUAL ELIGIBLE DEMOS TOTAL		99.3	0.0	0.7	23.4	10.2
MSHO/MnDHO TOTAL		98.1	0.5	1.5	11.8	3.4
WPP TOTAL		64.9	2.0	33.1	56.1	25.0
SCO TOTAL		90.9	0.6	8.5	31.7	13.8
PACE	Plan A	9.9	0.0	90.1	20.2	9.0
PACE	Plan B	95.7	0.0	4.3	9.5	1.2
PACE	Plan C	84.1	0.0	15.9	21.6	3.6
PACE	Plan D	100.0	0.0	0.0	4.3	0.0
PACE	Plan E	100.0	0.0	0.0	4.5	2.3
PACE	Plan F	96.8	1.1	2.1	10.0	1.3
PACE	Plan G	99.5	0.0	0.5	7.5	1.9
PACE	Plan H	80.0	0.0	20.0	34.2	2.5
PACE	Plan I	93.9	0.0	6.1	35.3	11.8
PACE	Plan J	75.4	0.0	24.6	19.0	4.7
PACE	Plan K	94.0	0.0	6.0	22.6	2.2
SCO	Plan L <sup>3</sup>	93.4	0.0	6.6	77.0	33.6
SCO	Plan M	53.2	0.0	46.8	43.3	19.1
SCO	Plan N <sup>3</sup>	47.6	5.2	47.2	44.6	20.6
PACE	Plan O	98.6	0.0	1.4	3.5	1.8
MSHO/MnDHO	Plan P	100.0	0.0	0.0	16.7	0.0
MSHO/MnDHO	Plan Q <sup>3</sup>	100.0	0.0	0.0	7.1	1.5
MSHO/MnDHO	Plan R	100.0	0.0	0.0	13.7	3.9
MSHO/MnDHO	Plan S <sup>3</sup>	99.1	0.0	0.9	9.4	1.9
MSHO/MnDHO	Plan T <sup>3</sup>	99.2	0.0	0.8	58.3	29.6
MSHO/MnDHO	Plan U	100.0	0.0	0.0	4.3	2.1
MSHO/MnDHO	Plan V <sup>3</sup>	99.4	0.0	0.6	15.6	6.7
MSHO/MnDHO	Plan W <sup>3</sup>	99.6	0.0	0.4	36.0	17.5
MSHO/MnDHO	Plan X	96.9	0.6	2.5	0.0	0.0
MSHO/MnDHO	Plan Y <sup>3</sup>	99.1	0.0	0.9	32.6	13.9

(continued)



**Table 19**  
**2007 HOS-M: Survey language and language-related proxy information**  
**Community-residing non-ESRD respondents<sup>1</sup> aged 55+<sup>2</sup>**

Plan type	Plan name	Survey language			Language-related proxy information	
		English	Chinese	Spanish	Reason for proxy: unable to speak/read English <sup>4</sup>	Proxy role: translated survey questions <sup>5</sup>
PACE	Plan Z	100.0	0.0	0.0	12.7	1.9
PACE	Plan AA	100.0	0.0	0.0	9.3	1.7
PACE	Plan BB	100.0	0.0	0.0	4.8	4.8
PACE	Plan CC <sup>3</sup>	65.5	13.2	21.3	47.0	18.9
PACE	Plan DD	89.7	0.0	10.3	15.3	0.0
PACE	Plan EE	96.8	1.6	1.6	11.4	0.0
PACE	Plan FF	100.0	0.0	0.0	12.7	1.8
PACE	Plan GG	98.2	1.0	0.8	12.5	0.4
PACE	Plan HH	99.3	0.0	0.7	12.2	1.3
PACE	Plan II	100.0	0.0	0.0	13.8	2.4
PACE	Plan JJ	100.0	0.0	0.0	6.3	1.1
PACE	Plan KK	100.0	0.0	0.0	7.1	11.1
PACE	Plan LL	80.5	0.0	19.5	13.8	3.4
PACE	Plan MM	98.1	0.0	1.9	16.4	0.8
PACE	Plan NN	100.0	0.0	0.0	9.5	2.1
PACE	Plan OO	86.5	0.0	13.5	13.7	0.0
PACE	Plan PP	12.2	0.0	87.8	14.8	5.2
PACE	Plan QQ	100.0	0.0	0.0	11.4	2.5
WPP	Plan RR	98.5	0.0	1.5	25.0	11.8
WPP	Plan SS	99.8	0.0	0.2	6.9	1.5
WPP	Plan TT	98.2	0.0	1.8	4.1	0.0
WPP	Plan UU	95.3	1.5	3.2	19.2	6.2
PACE	Plan VV	92.9	0.0	7.1	6.6	3.0
PACE	Plan WW	90.2	0.0	9.8	9.6	3.6
PACE	Plan XX	30.4	61.4	8.3	29.8	7.2
PACE	Plan YY	92.1	2.8	5.1	19.6	12.1
PACE	Plan ZZ	91.4	4.3	4.3	5.6	0.0

NOTES:

<sup>1</sup> Respondents are defined as eligibles who completed all 6 ADL questions ( items 4a-4f).

<sup>2</sup> SCO participants are aged 65+

<sup>3</sup> Percent of proxy respondents who cited this as one of the reasons for serving as a proxy

<sup>4</sup> Percent of proxy respondents citing this reason for needing a proxy.

<sup>5</sup> Percent of proxy respondents who provided translation assistance.

SOURCE: RTI analysis of the 2007 HOS-M survey.

Computer Output: 2007 hos\_15.xls

**Table 20**  
**2007 HOS-M: Type of professional proxy respondent**  
**Community-residing non-ESRD respondents<sup>1</sup> aged 55+<sup>2</sup>**

Plan type	Plan name	Home health aide, personal care attendant, or CNA	Nurse (RN, LPN, NP)	Social worker or case manager	Adult foster care, adult day care or assisted living staff	Interpreter	Other
		%	%	%	%	%	%
TOTAL SAMPLE		16.3	15.2	46.0	14.3	1.3	7.0
PACE TOTAL		13.9	10.7	54.6	13.1	1.1	6.7
DUAL ELIGIBLE DEMOS TOTAL		17.8	29.0	22.4	22.1	1.0	7.6
MSHO/MnDHO TOTAL		45.5	18.2	18.2	9.1	0.0	9.1
WPP TOTAL		27.1	16.5	41.2	3.5	4.7	7.1
SCO TOTAL		21.9	25.7	25.9	17.3	1.7	7.6
PACE	Plan A	2.6	0.0	94.7	0.0	0.0	2.6
PACE	Plan B	15.6	3.1	53.1	12.5	0.0	15.6
PACE	Plan C	0.0	0.0	66.7	33.3	0.0	0.0
PACE	Plan D	14.3	28.6	42.9	0.0	0.0	14.3
PACE	Plan E	0.0	0.0	100.0	0.0	0.0	0.0
PACE	Plan F	0.0	100.0	0.0	0.0	0.0	0.0
PACE	Plan G	0.0	100.0	0.0	0.0	0.0	0.0
PACE	Plan H	0.0	0.0	50.0	50.0	0.0	0.0
PACE	Plan I	0.0	0.0	100.0	0.0	0.0	0.0
PACE	Plan J	3.1	6.3	59.4	12.5	9.4	9.4
PACE	Plan K	0.0	0.0	91.7	0.0	0.0	8.3
SCO	Plan L <sup>3</sup>	6.7	13.3	53.3	0.0	0.0	26.7
SCO	Plan M	51.5	9.1	24.2	9.1	0.0	6.1
SCO	Plan N <sup>3</sup>	13.5	24.3	51.4	0.0	10.8	0.0
PACE	Plan O	16.7	0.0	83.3	0.0	0.0	0.0
MSHO/MnDHO	Plan P	66.7	0.0	33.3	0.0	0.0	0.0
MSHO/MnDHO	Plan Q <sup>3</sup>	19.1	25.5	25.5	19.1	0.0	10.6
MSHO/MnDHO	Plan R	30.0	20.0	10.0	40.0	0.0	0.0
MSHO/MnDHO	Plan S <sup>3</sup>	13.6	28.8	23.7	33.9	0.0	0.0
MSHO/MnDHO	Plan T <sup>3</sup>	30.0	25.0	10.0	15.0	0.0	20.0
MSHO/MnDHO	Plan U	11.1	22.2	11.1	38.9	0.0	16.7
MSHO/MnDHO	Plan V <sup>3</sup>	25.6	25.6	30.2	16.3	0.0	2.3
MSHO/MnDHO	Plan W <sup>3</sup>	6.8	38.6	20.5	20.5	2.3	11.4
MSHO/MnDHO	Plan X	15.0	5.0	50.0	10.0	10.0	10.0
MSHO/MnDHO	Plan Y <sup>3</sup>	17.9	48.7	10.3	15.4	0.0	7.7

(continued)

**Table 20 (continued)**  
**2007 HOS-M: Type of professional proxy respondent**  
**Community-residing non-ESRD respondents<sup>1</sup> aged 55+<sup>2</sup>**

Plan type	Plan name	Home health aide, personal care attendant, or CNA	Nurse (RN, LPN, NP)	Social worker or case manager	Adult foster care, adult day care or assisted living staff	Interpreter	Other
		%	%	%	%	%	%
PACE	Plan Z	30.0	0.0	70.0	0.0	0.0	0.0
PACE	Plan AA	16.7	70.0	13.3	0.0	0.0	0.0
PACE	Plan BB	0.0	0.0	100.0	0.0	0.0	0.0
PACE	Plan CC <sup>3</sup>	15.1	8.9	67.2	3.6	1.6	3.6
PACE	Plan DD	0.0	33.3	50.0	0.0	0.0	16.7
PACE	Plan EE	40.0	0.0	20.0	20.0	0.0	20.0
PACE	Plan FF	10.0	20.0	70.0	0.0	0.0	0.0
PACE	Plan GG	25.2	1.5	17.8	51.1	0.0	4.4
PACE	Plan HH	18.2	0.0	63.6	0.0	0.0	18.2
PACE	Plan II	11.1	22.2	44.4	11.1	0.0	11.1
PACE	Plan JJ	22.7	36.4	18.2	0.0	0.0	22.7
PACE	Plan KK	50.0	0.0	50.0	0.0	0.0	0.0
PACE	Plan LL	66.7	0.0	0.0	0.0	0.0	33.3
PACE	Plan MM	0.0	0.0	100.0	0.0	0.0	0.0
PACE	Plan NN	0.0	0.0	71.4	14.3	0.0	14.3
PACE	Plan OO	7.1	7.1	78.6	7.1	0.0	0.0
PACE	Plan PP	0.0	26.1	60.9	8.7	0.0	4.3
PACE	Plan QQ	16.7	27.8	46.3	3.7	0.0	5.6
WPP	Plan RR	0.0	0.0	0.0	50.0	0.0	50.0
WPP	Plan SS	56.3	25.0	18.8	0.0	0.0	0.0
WPP	Plan TT	25.0	25.0	25.0	0.0	0.0	25.0
WPP	Plan UU	45.5	9.1	18.2	18.2	0.0	9.1
PACE	Plan VV	1.6	9.7	59.7	27.4	1.6	0.0
PACE	Plan WW	10.0	10.0	40.0	20.0	0.0	20.0
PACE	Plan XX	15.0	0.8	65.4	3.0	1.5	14.3
PACE	Plan YY	11.8	4.4	72.1	2.9	2.9	5.9
PACE	Plan ZZ	14.3	0.0	28.6	50.0	0.0	7.1

NOTES:

<sup>1</sup> Respondents are defined as eligibles who completed all 6 ADL questions (items 4a-4f).

<sup>2</sup> SCO participants are aged 65+.

<sup>3</sup> Sampled plans, where contact information was not collected.

SOURCE: RTI analysis of the 2007 HOS-M survey.

Computer Output: hosm2007\_12.xls

**Table 21**  
**2007 HOS-M: Reported memory loss by respondent<sup>1</sup> type by plan**  
**Community-residing non-ESRD respondents aged 55+<sup>2</sup>**

Plan type	Plan name	Total Sample		Self-Respondents		Family Proxy		Health Professional		Missing Proxy Information	
		Memory		Memory		Memory		Memory		Memory	
		Loss	Missing	Loss	Missing	Loss	Missing	Loss	Missing	Loss	Missing
		%	%	%	%	%	%	%	%	%	%
TOTAL SAMPLE		40.4	6.1	24.4	5.8	58.1	4.1	54.9	2.5	26.8	13.2
PACE TOTAL		52.8	5.9	31.8	7.2	66.9	4.0	61.4	2.5	36.7	14.1
DUAL ELIGIBLE DEMOS TOTAL		27.0	6.2	17.0	5.0	48.0	4.7	38.0	1.0	19.4	12.6
MSHO/MnDHO TOTAL		36.4	6.7	26.2	6.1	55.0	3.7	34.3	0.0	22.9	14.3
WPP TOTAL		36.4	5.9	30.7	5.0	44.0	3.9	47.4	8.4	27.7	12.5
SCO TOTAL		30.4	6.2	20.8	5.1	47.8	4.3	39.7	2.5	21.6	12.8
PACE	Plan A	60.7	1.0	52.4	2.4	65.4	0.0	58.5	0.0	63.0	3.7
PACE	Plan B	50.3	6.5	33.2	6.5	71.2	2.3	55.9	2.9	26.1	21.7
PACE	Plan C	71.0	2.9	37.5	12.5	80.4	0.0	66.7	0.0	50.0	16.7
PACE	Plan D	40.0	6.3	34.3	5.7	59.0	2.6	12.5	12.5	15.4	15.4
PACE	Plan E	68.4	3.5	57.1	0.0	79.5	2.6	40.0	0.0	33.3	16.7
PACE	Plan F	65.3	4.2	42.9	0.0	70.9	3.8	100.0	0.0	25.0	12.5
PACE	Plan G	69.6	3.9	39.3	3.6	78.5	3.4	76.9	0.0	35.3	11.8
PACE	Plan H	56.7	5.0	33.3	0.0	68.6	5.7	80.0	0.0	20.0	20.0
PACE	Plan I	42.9	2.0	30.4	0.0	62.5	6.3	0.0	0.0	44.4	0.0
PACE	Plan J	42.0	4.8	18.3	6.7	58.7	3.3	44.4	2.8	31.6	10.5
PACE	Plan K	39.8	6.6	17.3	9.6	57.8	6.0	41.7	0.0	21.1	5.3
SCO	Plan L <sup>3</sup>	33.5	6.5	29.5	4.3	41.2	4.2	38.9	0.0	21.3	17.2
SCO	Plan M	40.9	6.7	33.0	6.5	49.5	4.1	61.5	10.3	30.8	11.0
SCO	Plan N <sup>3</sup>	35.8	5.0	30.0	4.5	43.3	3.4	36.8	10.5	31.9	8.6
PACE	Plan O	60.8	2.7	42.9	7.1	66.7	2.0	66.7	0.0	33.3	0.0
MSHO/MnDHO	Plan P	26.0	6.0	21.9	9.4	55.6	0.0	33.3	0.0	0.0	0.0
MSHO/MnDHO	Plan Q <sup>3</sup>	20.3	6.6	13.9	6.2	33.5	3.8	35.4	0.0	16.5	11.5
MSHO/MnDHO	Plan R	30.2	4.0	21.3	3.7	58.5	0.0	40.0	10.0	23.3	7.0
MSHO/MnDHO	Plan S <sup>3</sup>	22.4	5.0	14.4	3.6	39.8	4.0	31.1	0.0	13.8	12.3
MSHO/MnDHO	Plan T <sup>3</sup>	35.8	5.5	22.2	3.4	57.9	3.9	33.3	4.8	23.3	13.3
MSHO/MnDHO	Plan U	29.4	8.8	12.3	4.9	56.6	12.3	52.6	0.0	15.5	14.1
MSHO/MnDHO	Plan V <sup>3</sup>	25.4	5.1	15.2	3.7	48.6	4.2	24.4	0.0	17.9	11.3
MSHO/MnDHO	Plan W <sup>3</sup>	30.4	6.9	17.5	5.6	57.2	4.3	42.2	0.0	22.1	15.7
MSHO/MnDHO	Plan X	29.1	8.2	22.0	5.6	41.6	5.2	61.9	4.8	24.1	17.7
MSHO/MnDHO	Plan Y <sup>3</sup>	27.8	6.4	18.7	6.7	44.1	4.0	45.0	0.0	24.2	10.7

(continued)

**Table 21 (continued)**  
**2007 HOS-M: Reported memory loss by respondent<sup>1</sup> type by plan**  
**Community-residing non-ESRD respondents aged 55+<sup>2</sup>**

Plan type	Plan name	Total Sample		Self-Respondents		Family Proxy		Health Professional		Missing Proxy Information	
		Memory		Memory		Memory		Memory		Memory	
		Loss	Missing	Loss	Missing	Loss	Missing	Loss	Missing	Loss	Missing
		%	%	%	%	%	%	%	%	%	%
PACE	Plan Z	55.6	3.7	33.3	6.7	71.1	0.0	50.0	0.0	27.3	18.2
PACE	Plan AA	52.2	5.0	29.4	3.9	73.9	1.1	54.8	3.2	25.8	19.4
PACE	Plan BB	44.4	8.3	30.0	10.0	52.9	0.0	50.0	0.0	40.0	40.0
PACE	Plan CC <sup>3</sup>	56.5	6.3	52.0	10.1	64.5	2.6	58.1	3.0	40.7	16.0
PACE	Plan DD	50.0	8.9	29.0	3.2	58.0	7.4	66.7	5.6	31.3	31.3
PACE	Plan EE	51.6	4.8	27.0	5.4	69.1	5.9	80.0	0.0	21.4	0.0
PACE	Plan FF	28.0	8.2	22.2	5.6	45.7	8.7	10.0	0.0	25.0	16.7
PACE	Plan GG	59.2	8.1	27.9	13.5	71.7	6.6	79.1	5.0	41.7	8.3
PACE	Plan HH	50.3	8.4	23.3	9.3	77.1	4.3	33.3	0.0	22.2	27.8
PACE	Plan II	45.4	4.6	18.8	6.3	54.8	2.7	44.4	0.0	20.0	20.0
PACE	Plan JJ	42.4	9.1	18.0	10.0	56.9	6.9	73.9	0.0	15.0	25.0
PACE	Plan KK	31.1	20.0	8.3	16.7	50.0	16.7	0.0	0.0	20.0	60.0
PACE	Plan LL	46.3	2.4	20.0	10.0	60.0	0.0	50.0	0.0	0.0	0.0
PACE	Plan MM	66.9	6.5	35.7	0.0	72.2	5.6	0.0	0.0	58.3	25.0
PACE	Plan NN	61.0	5.9	43.5	0.0	70.8	5.6	42.9	14.3	41.2	11.8
PACE	Plan OO	50.6	6.7	38.5	3.8	68.4	7.9	50.0	0.0	18.2	18.2
PACE	Plan PP	58.1	4.7	38.0	7.6	67.5	2.7	50.0	3.8	53.5	8.5
PACE	Plan QQ	52.1	5.8	24.0	0.0	50.0	11.5	63.0	3.7	62.5	12.5
WPP	Plan RR	38.8	6.0	40.5	0.0	57.1	0.0	33.3	0.0	15.4	30.8
WPP	Plan SS	32.4	7.5	27.0	5.1	45.6	6.1	31.3	0.0	21.1	14.9
WPP	Plan TT	50.9	6.1	39.0	9.8	70.8	0.0	50.0	0.0	28.6	14.3
WPP	Plan UU	36.9	5.8	17.2	8.2	61.8	2.2	33.3	0.0	25.8	9.7
PACE	Plan VV	39.8	7.4	21.2	8.6	57.2	4.3	58.1	1.6	29.0	15.9
PACE	Plan WW	60.8	5.6	32.7	10.2	83.8	4.1	50.0	0.0	40.0	0.0
PACE	Plan XX	54.7	4.0	32.5	4.8	66.2	3.4	65.7	2.2	47.3	6.3
PACE	Plan YY	55.3	7.4	32.7	9.6	60.5	7.9	72.1	0.0	36.8	26.3
PACE	Plan ZZ	51.6	5.4	16.7	10.0	72.5	2.5	80.0	0.0	25.0	12.5

NOTES:

<sup>1</sup> Respondents are defined as eligibles who completed all 6 ADL questions (items 4a-4f).

<sup>2</sup> SCO participants are aged 65+.

<sup>3</sup> Sampled plans, where contact information was not collected.

SOURCE: RTI analysis of the 2007 HOS-M survey.

Computer Output: hosm2007\_13.xls

**Table 22**  
**2007 HOS-M: Incontinence rates of respondents<sup>1</sup> by plan**  
**Community-residing non-ESRD respondents aged 55+<sup>2</sup>**

Plan type	Plan name	Incontinence <sup>4</sup>	Missing
		%	%
TOTAL SAMPLE NOTES:		27.7	4.2
PACE TOTAL		34.6	4.1
DUAL ELIGIBLE DEMOS TOTAL		22.1	3.8
MSHO/MnDHO TOTAL		30.1	4.3
WPP TOTAL		18.0	5.2
SCO TOTAL		22.1	4.2
PACE	Plan A	25.7	5.2
PACE	Plan B	36.3	3.5
PACE	Plan C	39.1	2.9
PACE	Plan D	38.9	3.2
PACE	Plan E	45.6	1.8
PACE	Plan F	34.7	4.2
PACE	Plan G	45.4	1.4
PACE	Plan H	28.3	5.0
PACE	Plan I	32.7	6.1
PACE	Plan J	25.6	4.8
PACE	Plan K	33.7	6.6
SCO	Plan L <sup>3</sup>	17.4	4.1
SCO	Plan M	21.3	6.8
SCO	Plan N <sup>3</sup>	16.3	5.0
PACE	Plan O	40.5	4.1
MSHO/MnDHO	Plan P	26.0	6.0
MSHO/MnDHO	Plan Q <sup>3</sup>	19.2	3.2
MSHO/MnDHO	Plan R	28.2	3.0
MSHO/MnDHO	Plan S <sup>3</sup>	25.0	2.1
MSHO/MnDHO	Plan T <sup>3</sup>	23.0	4.7
MSHO/MnDHO	Plan U	25.9	1.6
MSHO/MnDHO	Plan V <sup>3</sup>	21.3	3.8
MSHO/MnDHO	Plan W <sup>3</sup>	22.3	4.1
MSHO/MnDHO	Plan X	15.0	6.5
MSHO/MnDHO	Plan Y <sup>3</sup>	21.8	5.2
PACE	Plan Z	44.4	1.2
PACE	Plan AA	40.8	0.5
PACE	Plan BB	58.3	2.8
PACE	Plan CC <sup>3</sup>	27.5	4.4
PACE	Plan DD	42.5	6.8

(continued)

**Table 22 (continued)**  
**2007 HOS-M: Incontinence rates of respondents<sup>1</sup> by plan**  
**Community-residing non-ESRD respondents aged 55+<sup>2</sup>**

Plan type	Plan name	Incontinence <sup>4</sup>	Missing
		%	%
PACE	Plan EE	30.6	4.8
PACE	Plan FF	29.7	5.5
PACE	Plan GG	55.9	5.0
PACE	Plan HH	28.7	4.2
PACE	Plan II	28.7	3.7
PACE	Plan JJ	38.8	7.9
PACE	Plan KK	24.4	11.1
PACE	Plan LL	29.3	2.4
PACE	Plan MM	47.4	2.6
PACE	Plan NN	40.4	5.1
PACE	Plan OO	33.7	3.4
PACE	Plan PP	36.7	5.6
PACE	Plan QQ	42.1	0.8
WPP	Plan RR	35.8	4.5
WPP	Plan SS	26.9	3.8
WPP	Plan TT	35.1	5.3
WPP	Plan UU	32.0	4.7
PACE	Plan VV	30.0	4.3
PACE	Plan WW	42.0	4.2
PACE	Plan XX	22.4	2.2
PACE	Plan YY	26.5	5.1
PACE	Plan ZZ	46.2	4.3

NOTES:

<sup>1</sup> Respondents are defined as eligibles who completed all 6 ADL questions (items 4a-4f).

<sup>2</sup> SCO participants are aged 65+.

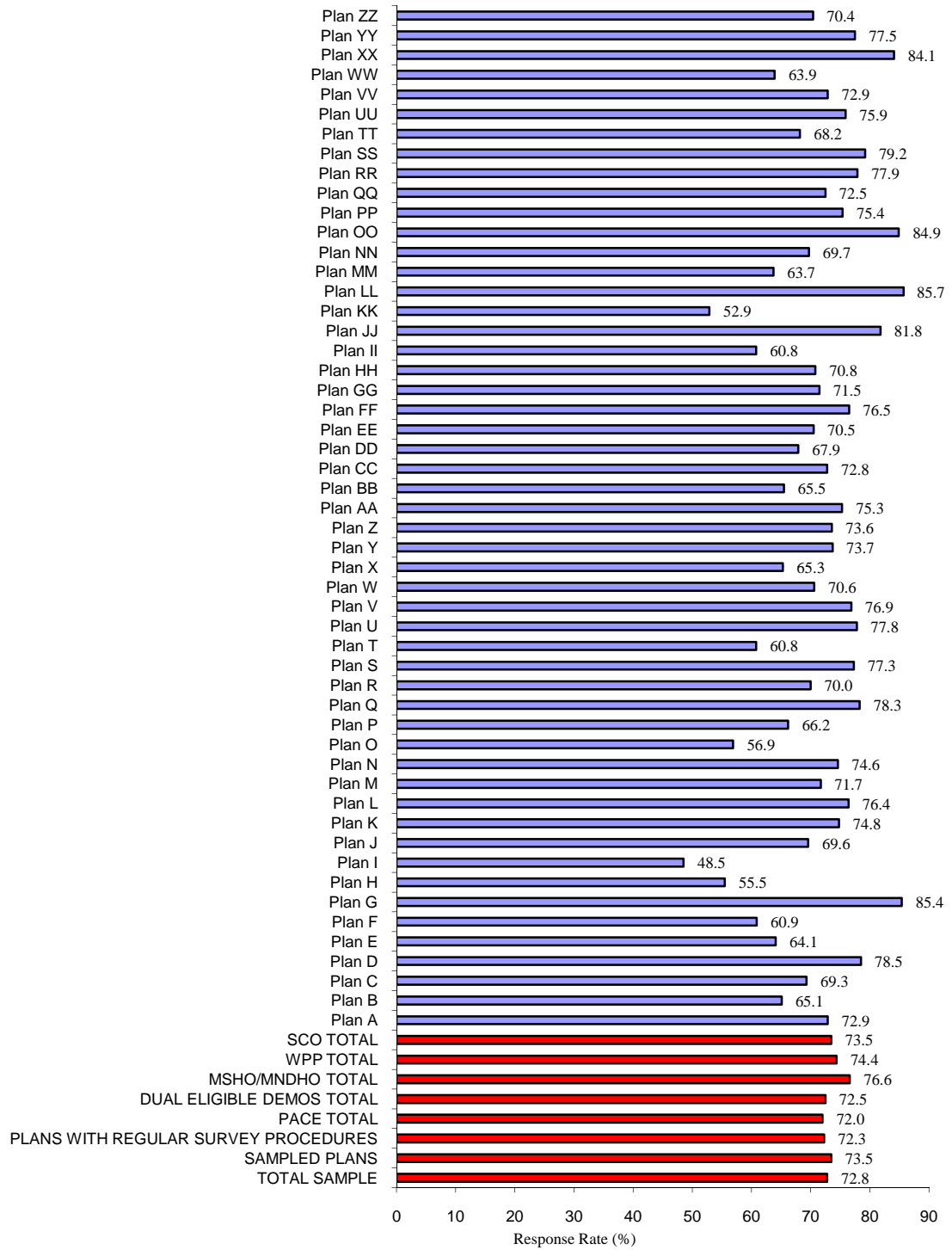
<sup>3</sup> Sampled plans, where contact information was not collected.

<sup>4</sup> Incontinence is defined as a daily difficulty controlling urination or catheter use.

SOURCE: RTI analysis of the 2007 HOS-M survey.

Computer Output: hosm2007\_14.xls

Figure 1  
 2007 HOS-M : Response Rates by Plan  
 Community-Residing, Non-ESRD Beneficiaries Aged 55+<sup>1</sup>



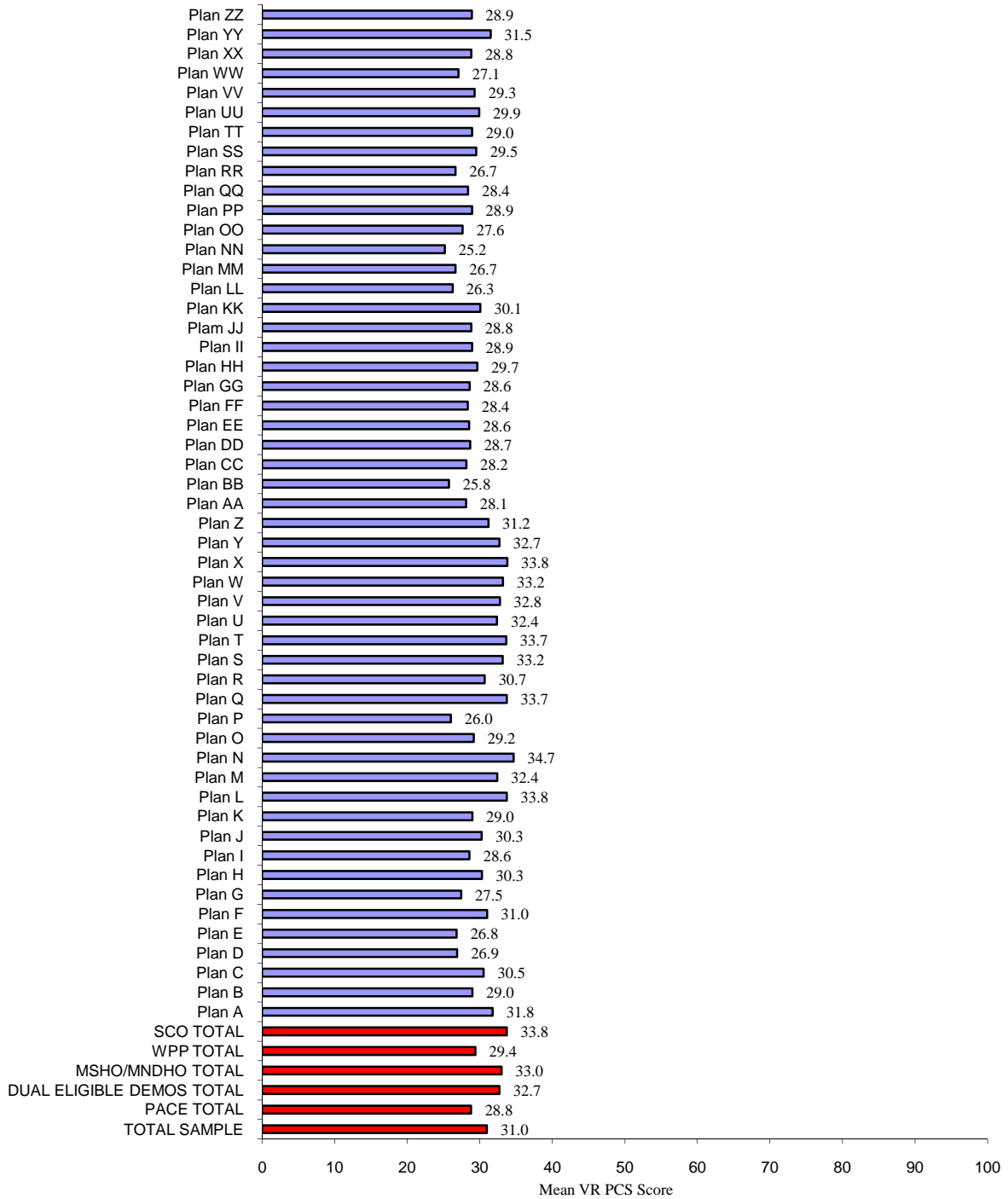
NOTE: Respondents are defined as eligibles who answered all 6 ADL questions.

<sup>1</sup> SCO enrollees are 65+.

SOURCE: RTI analysis of HOS-M data, 2007.



Figure 2  
 2007 HOS-M: Mean Unadjusted VR Physical Component Scores (PCS) by Plan  
 Community-Residing, Non-ESRD Beneficiaries Aged 55+<sup>1</sup>

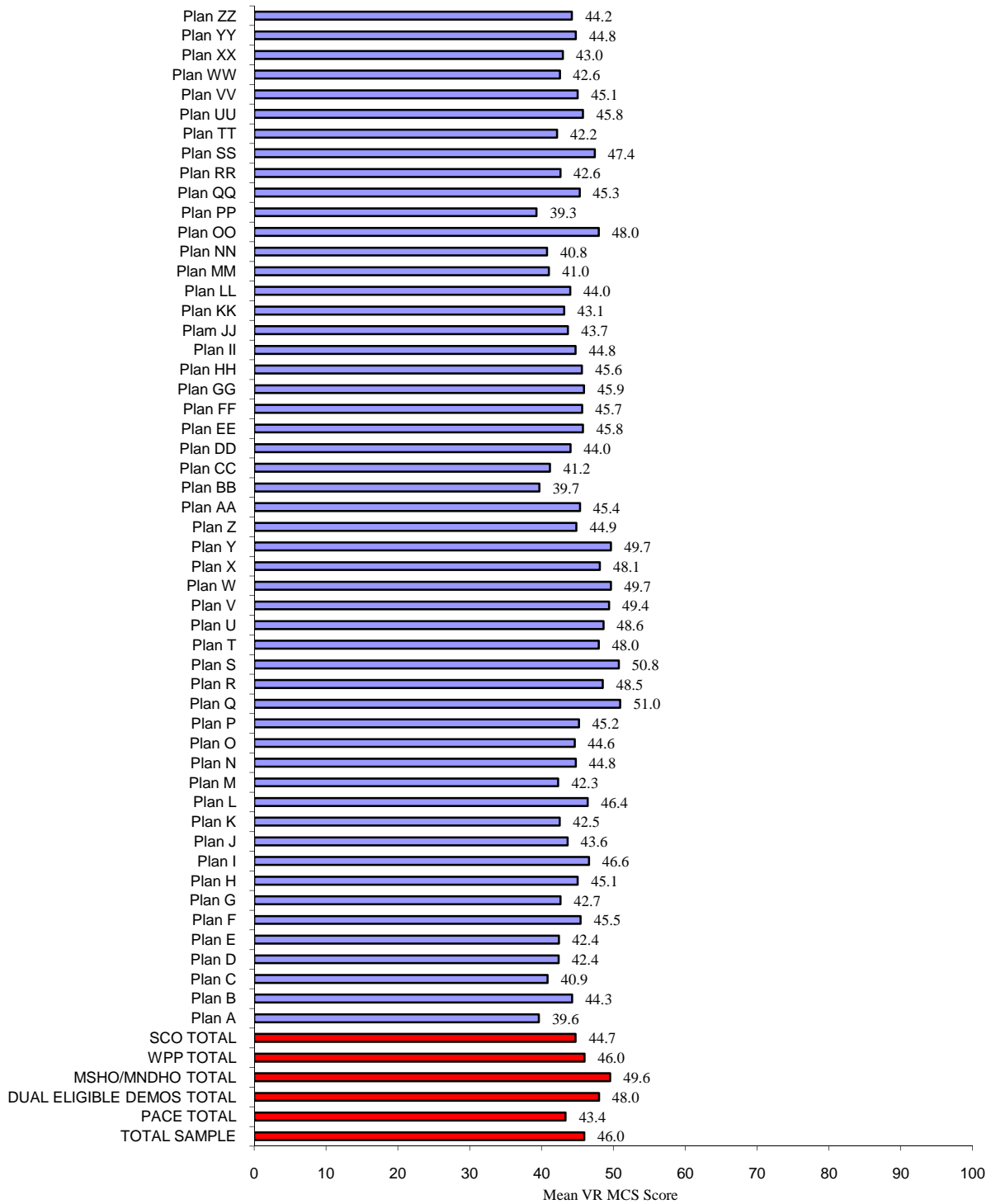


NOTE: Respondents are defined as eligibles who answered all 6 ADL questions.

<sup>1</sup> SCO enrollees are 65+.

SOURCE: RTI analysis of HOS-M data, 2007.

Figure 3  
 2007 HOS-M: Mean Unadjusted VR Mental Component Scores (MCS) by Plan  
 Community-Residing, Non-ESRD Beneficiaries Aged 55+<sup>1</sup>

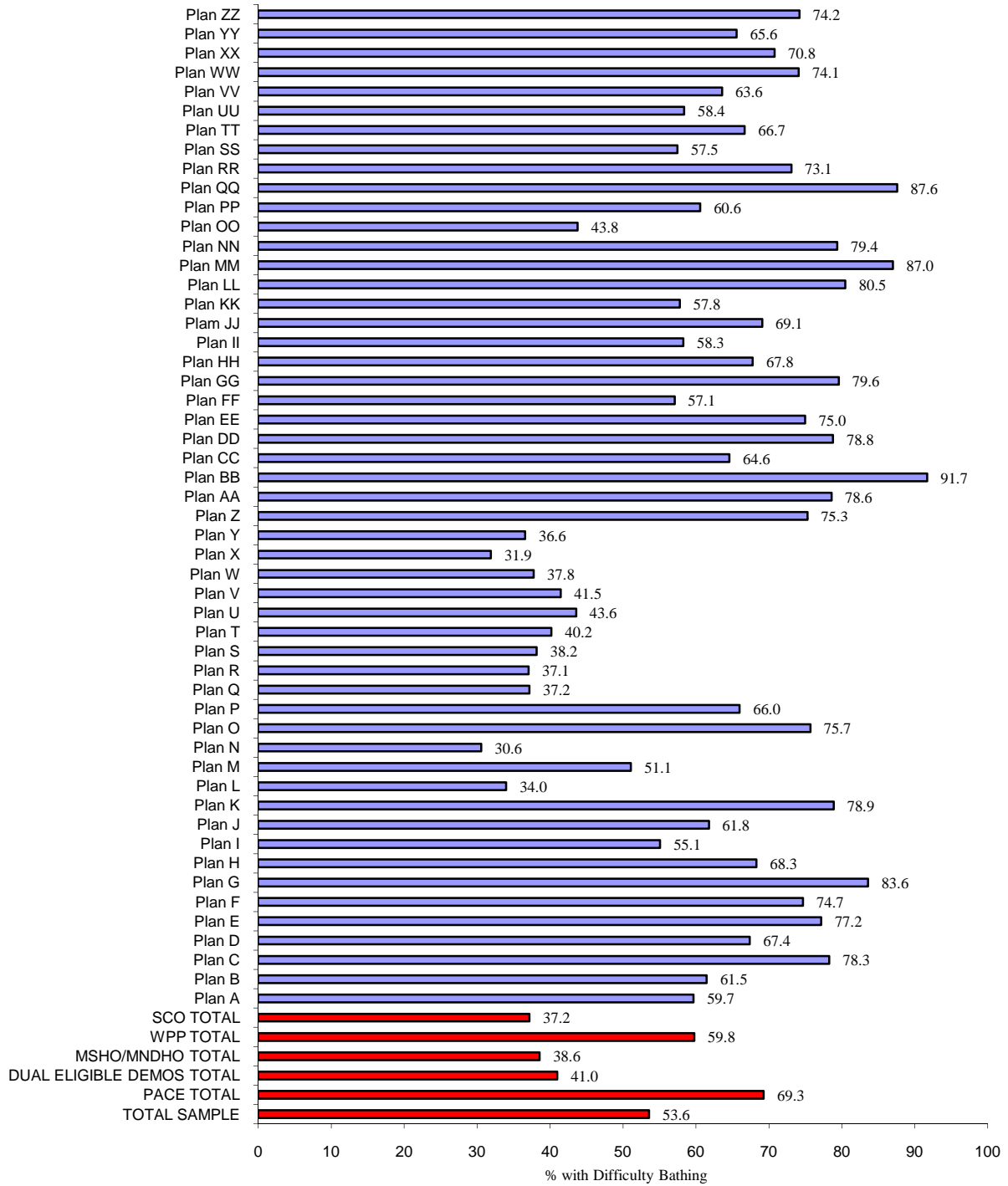


NOTE: Respondents are defined as eligibles who answered all 6 ADL questions.

<sup>1</sup> SCO enrollees are 65+.

SOURCE: RTI analysis of HOS-M data, 2007.

Figure 4  
 2007 HOS-M: ADL Limitations: Difficulty Bathing by Plan  
 Community-Residing, Non-ESRD Beneficiaries Aged 55+<sup>1</sup>

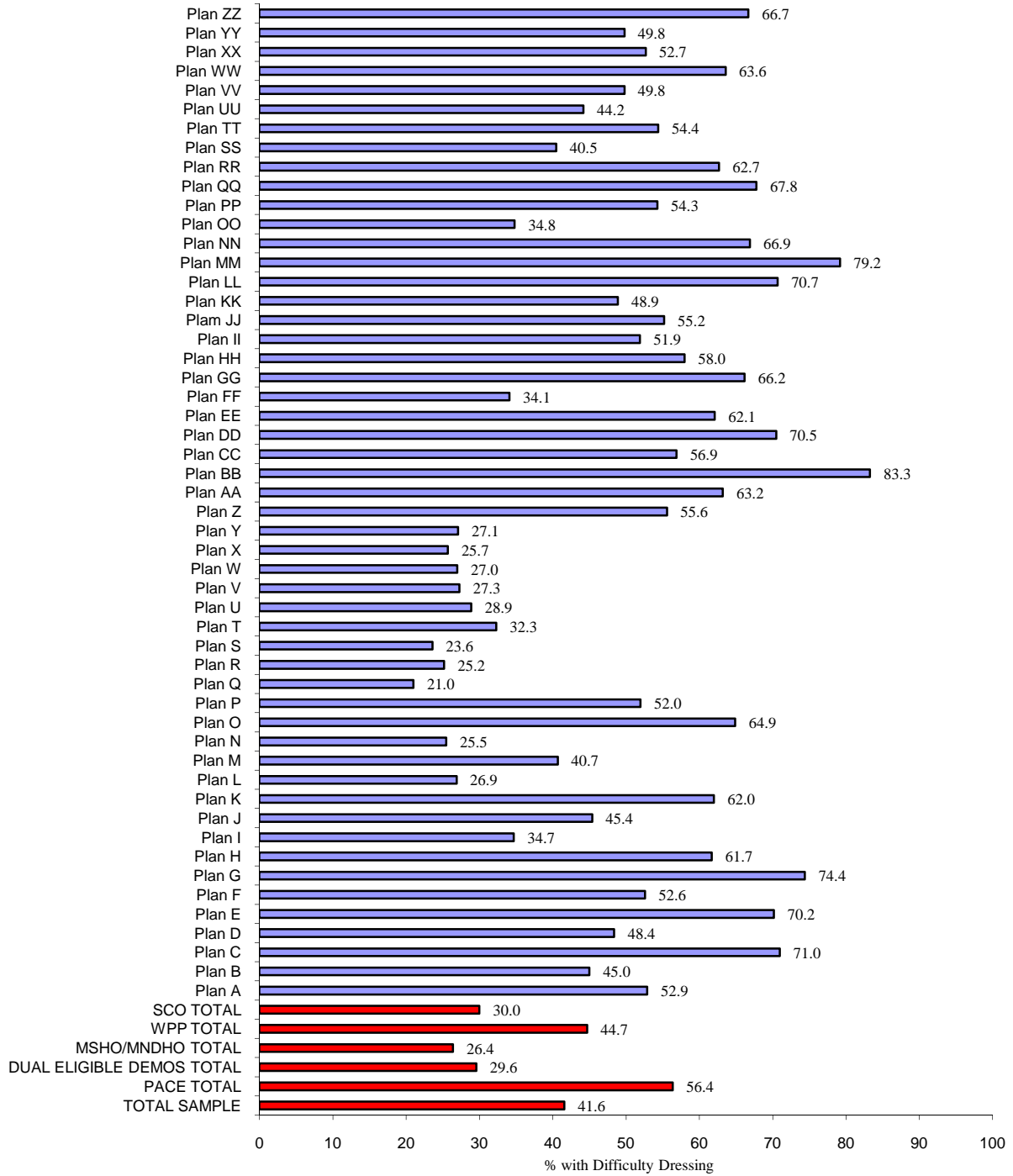


NOTE: Respondents are defined as eligibles who answered all 6 ADL questions.

<sup>1</sup> SCO enrollees are 65+.

SOURCE: RTI analysis of HOS-M data, 2007.

Figure 5  
 2007 HOS-M : ADL Limitations: Difficulty Dressing by Plan  
 Community-Residing, Non-ESRD Beneficiaries Aged 55+<sup>1</sup>

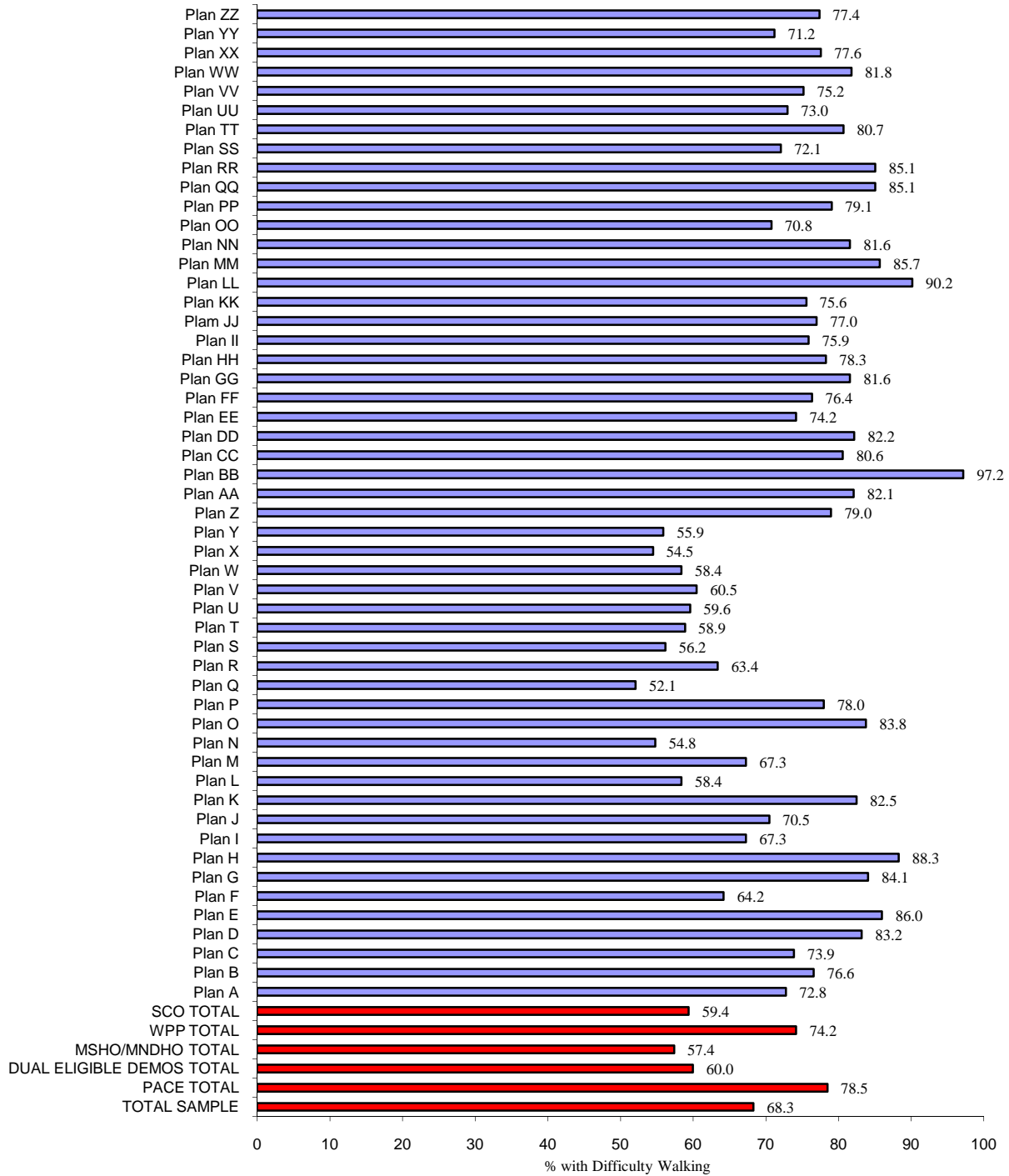


NOTE: Respondents are defined as eligibles who answered all 6 ADL questions.

<sup>1</sup> SCO enrollees are 65+.

SOURCE: RTI analysis of HOS-M data, 2007.

Figure 6  
 2007 HOS-M: ADL Limitations: Difficulty Walking by Plan  
 Community-Residing, Non-ESRD Beneficiaries Aged 55+<sup>1</sup>

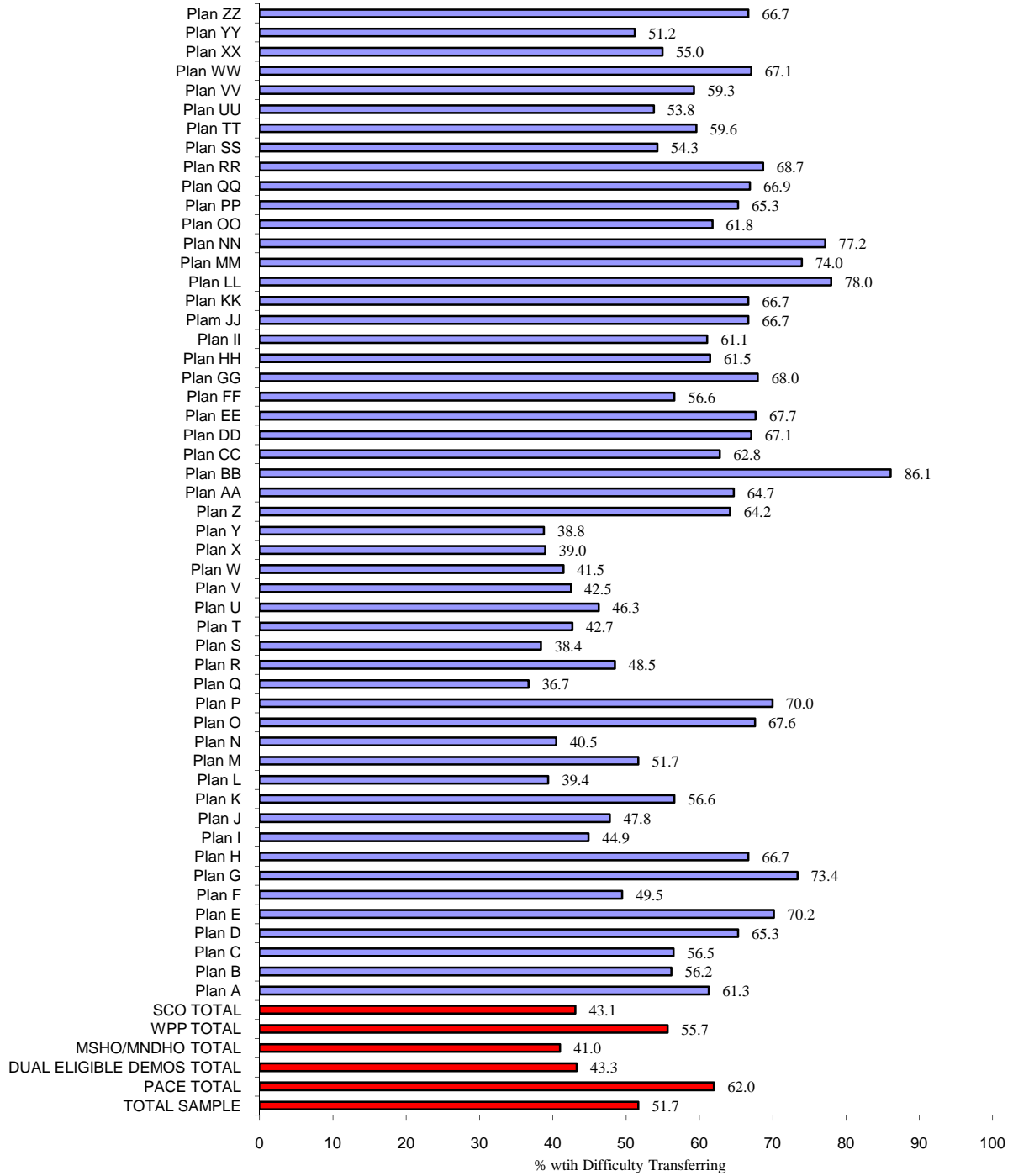


NOTE: Respondents are defined as eligibles who answered all 6 ADL questions.

<sup>1</sup> SCO enrollees are 65+.

SOURCE: RTI analysis of HOS-M data, 2007.

Figure 7  
 2007 HOS-M : ADL Limitations: Difficulty Transferring by Plan  
 Community-Residing, Non-ESRD Beneficiaries Aged 55+<sup>1</sup>

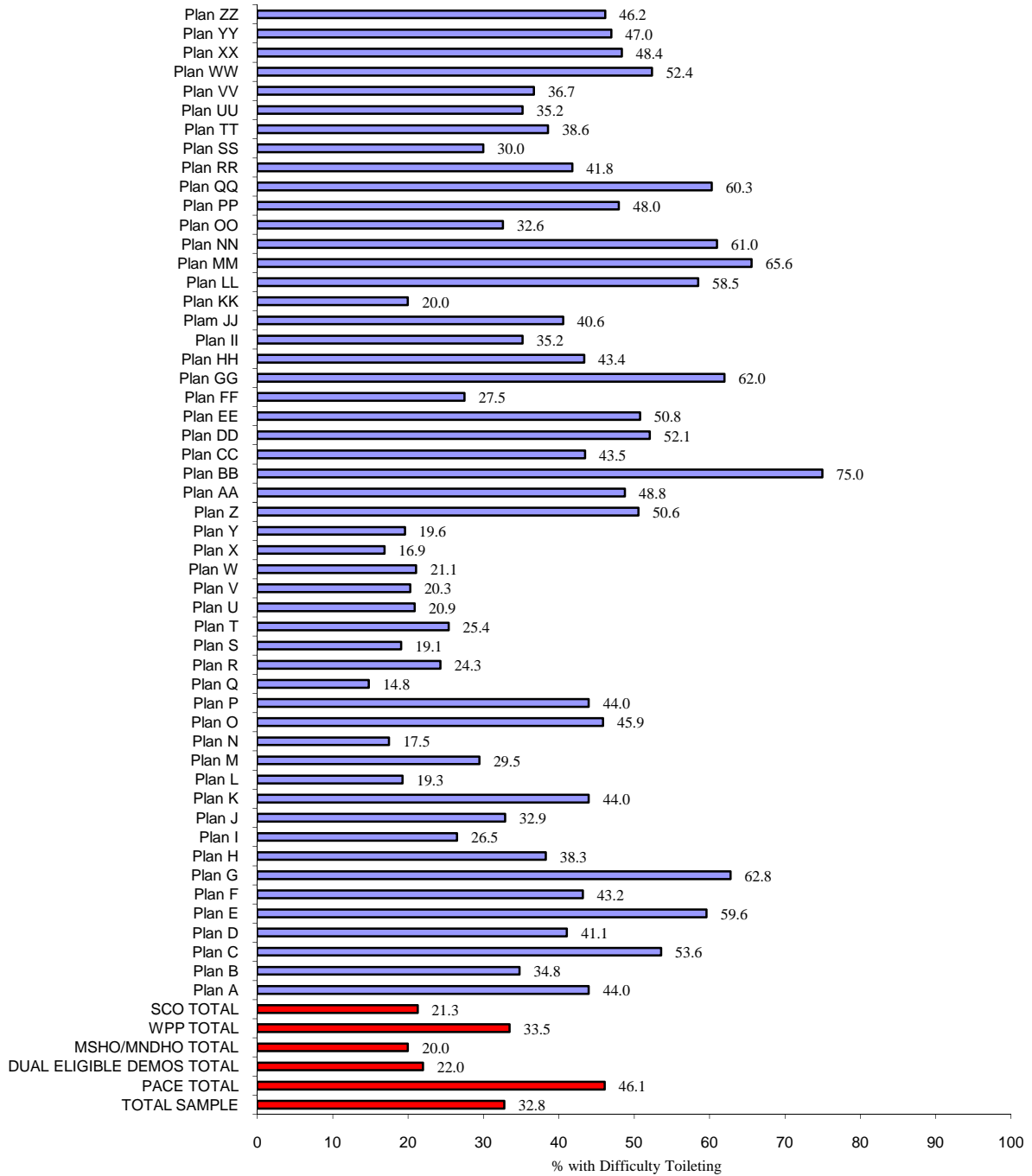


NOTE: Respondents are defined as eligibles who answered all 6 ADL questions.

<sup>1</sup>SCO enrollees are 65+.

SOURCE: RTI analysis of HOS-M data, 2007.

Figure 8  
 2007 HOS-M Findings: ADL Limitations: Difficulty Toileting by Plan  
 Community-Residing, Non-ESRD Beneficiaries Aged 55+<sup>1</sup>

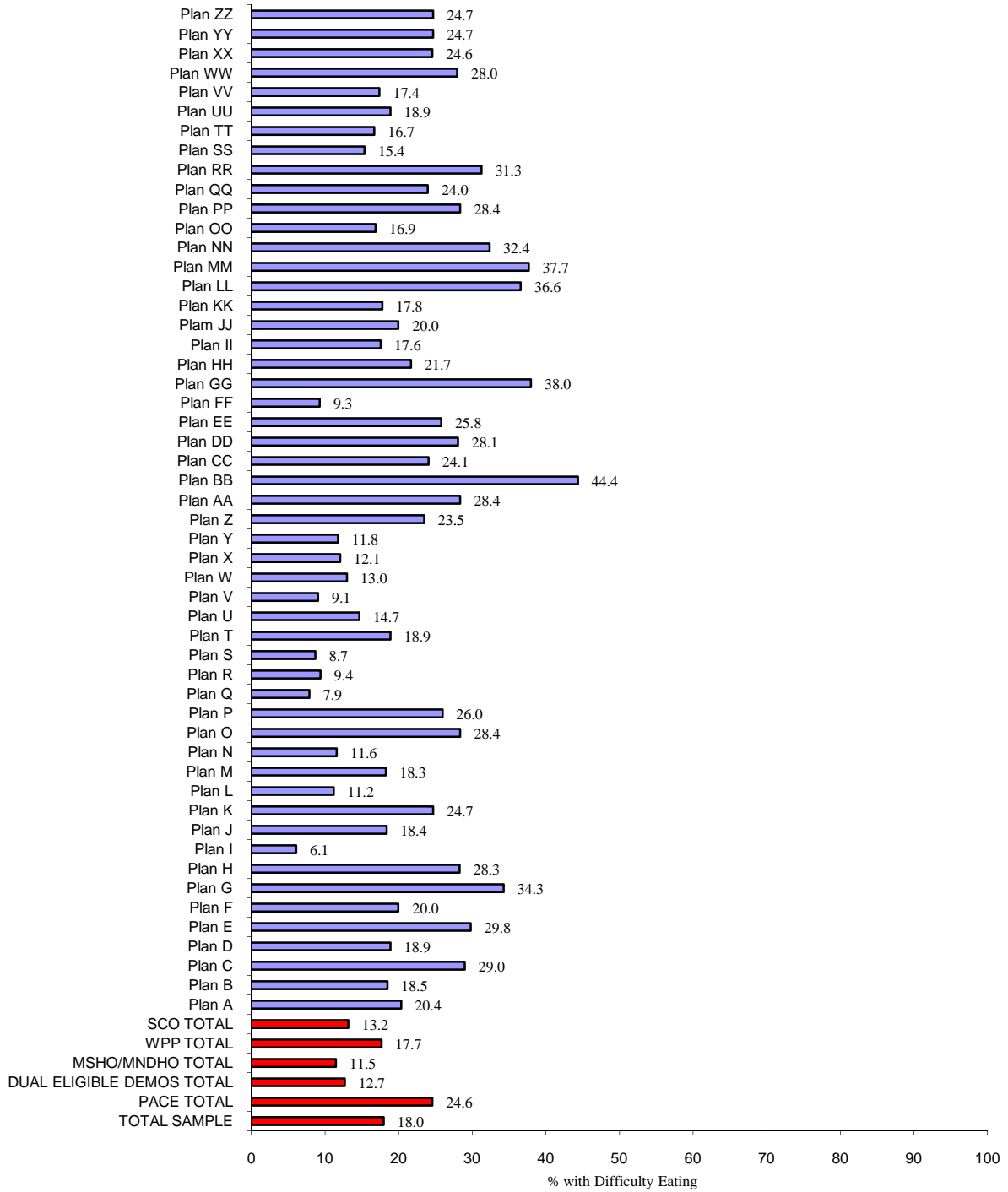


NOTE: Respondents are defined as eligibles who answered all 6 ADL questions.

<sup>1</sup> SCO enrollees are 65+.

SOURCE: RTI analysis of HOS-M data, 2007.

Figure 9  
 2007 HOS-M Findings : ADL Limitations: Difficulty Eating by Plan  
 Community-Residing, Non-ESRD Beneficiaries Aged 55+<sup>1</sup>



NOTE: Respondents are defined as eligibles who answered all 6 ADL questions.

<sup>1</sup>SCO enrollees are 65+.

SOURCE: RTI analysis of HOS-M data, 2007.