



Business Advisory Boards

A Sustainable Path to School-Industry Partnerships

April 30, 2019



Setting the Stage



Natassia Rodriguez Ott, Ph.D.
Education Researcher
RTI International



Todd Campbell
Education Consultant
RTI International



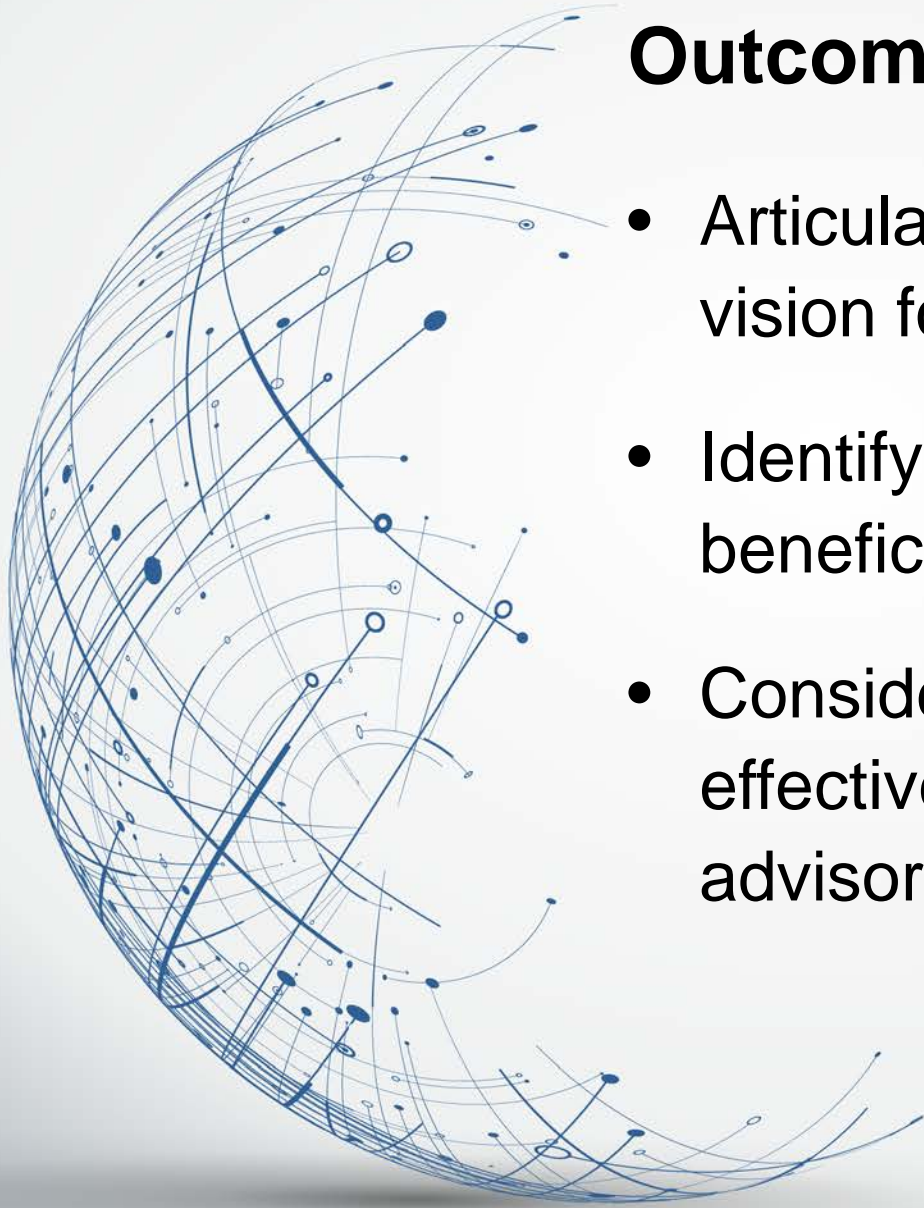
Linda Brannan
Career Development Coordinator
Wake STEM Early College



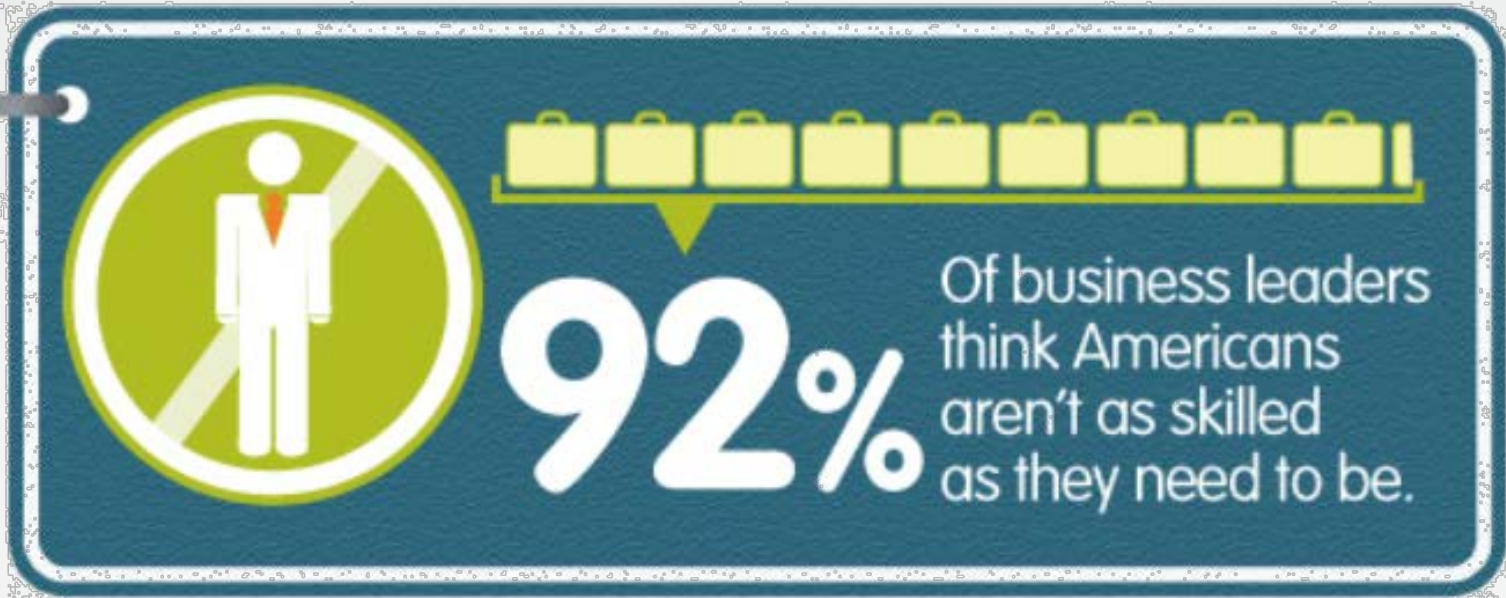
Michael Ray
Managing Director
Experis ManpowerGroup

Outcomes

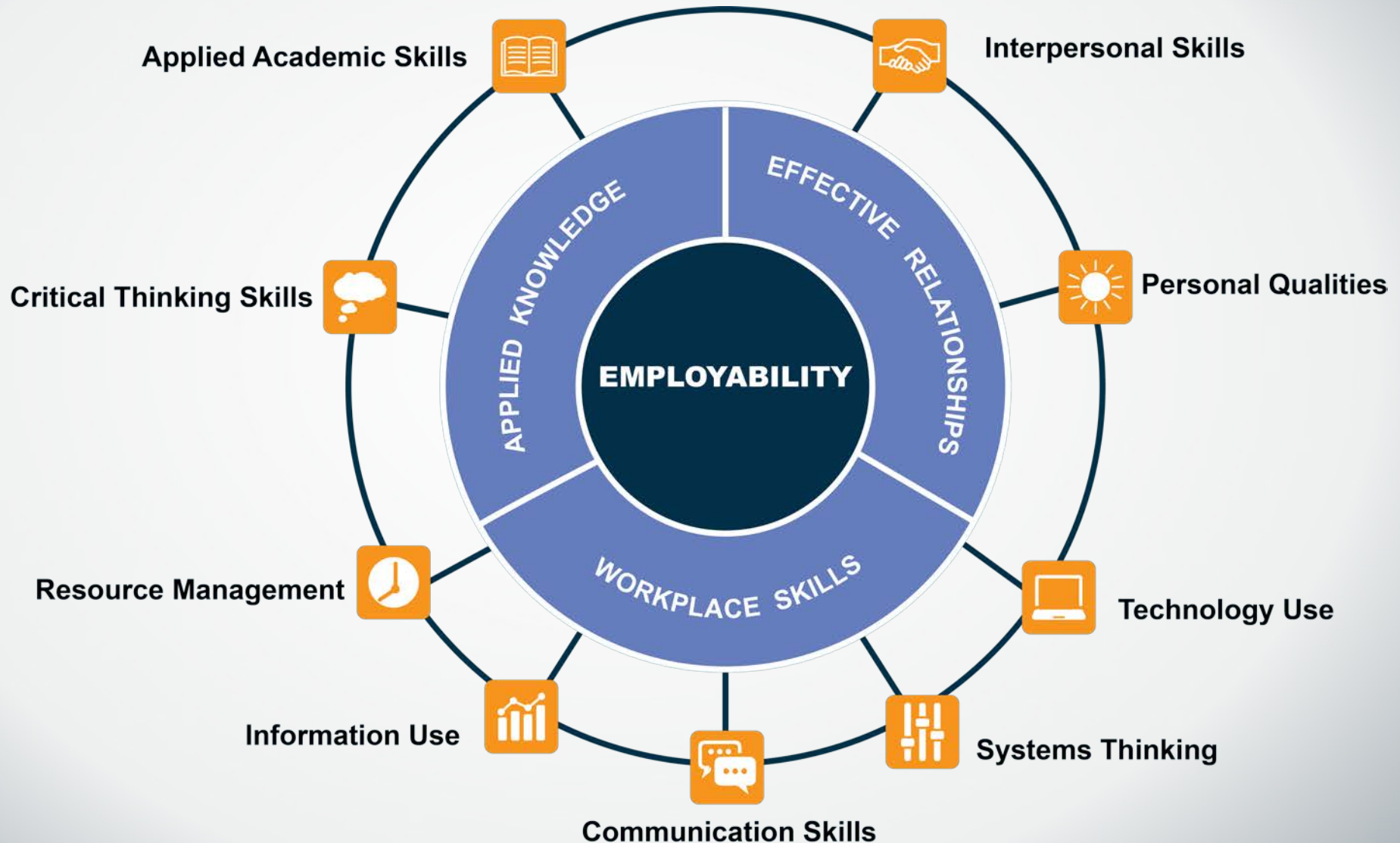
- Articulate a specific and common vision for business advisory boards
- Identify strategies for building mutually beneficial school-industry partnerships
- Consider next steps for developing effective and sustainable business advisory boards



Setting the Stage



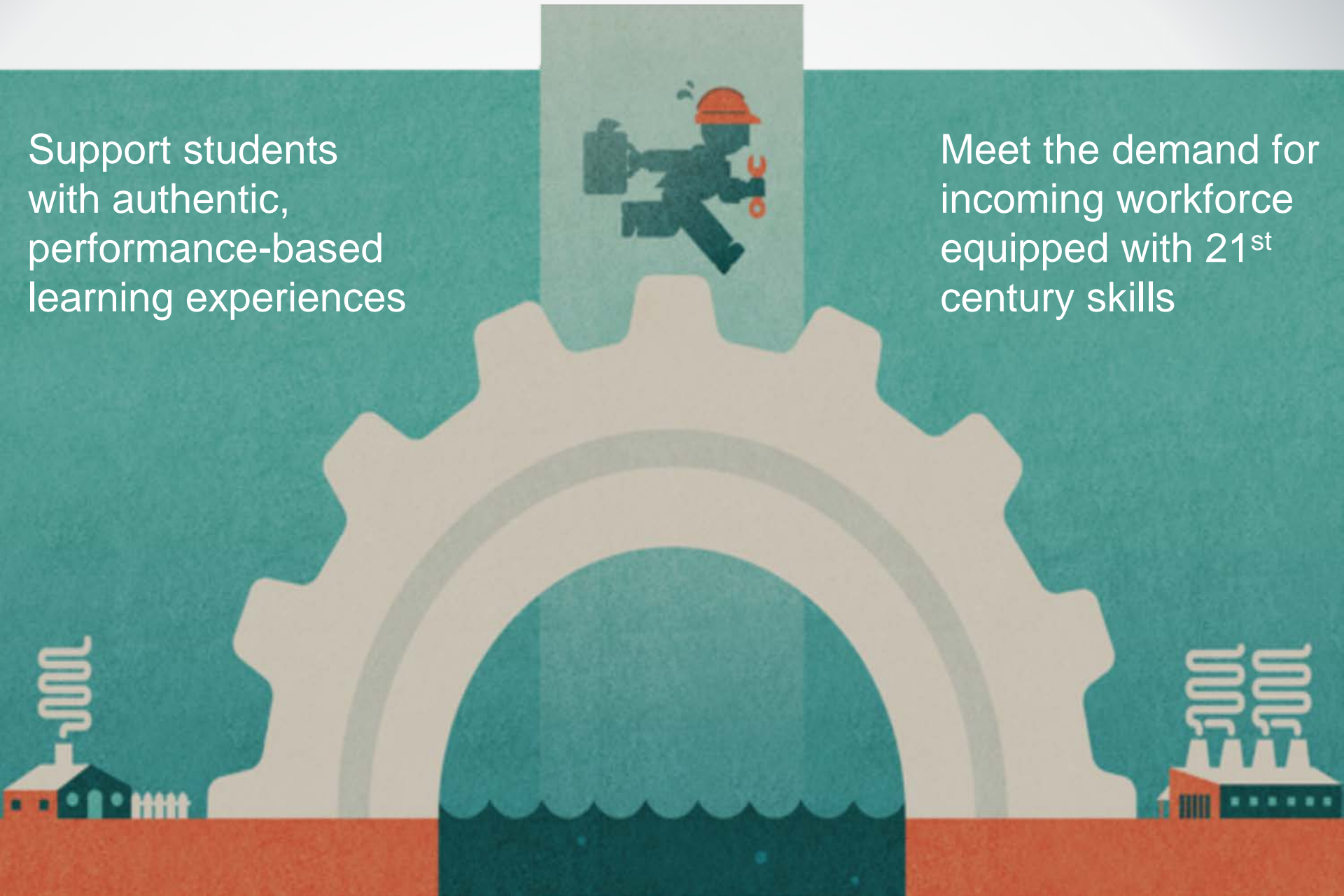
Setting the Stage



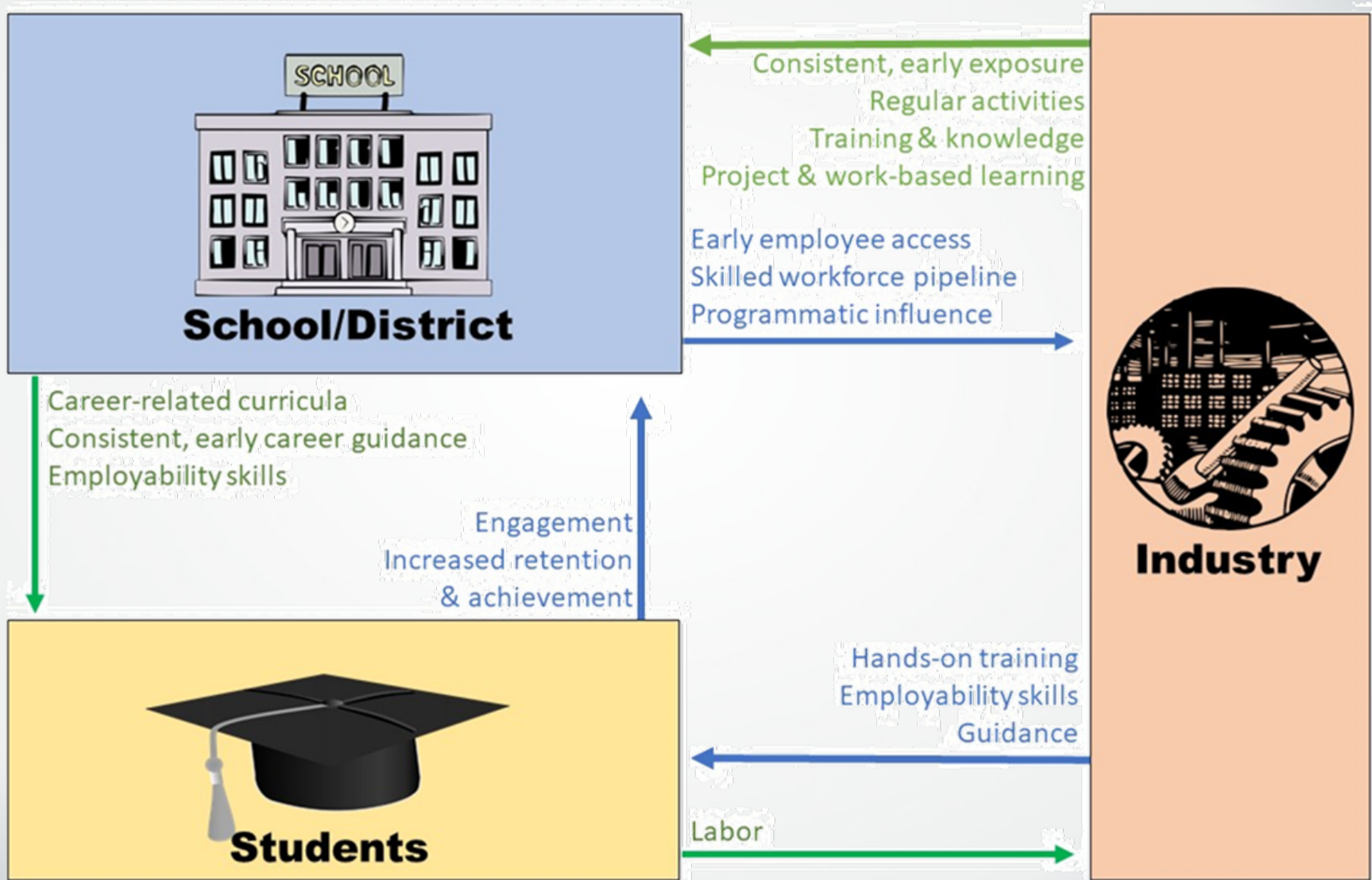
Bridging the Gap

Support students
with authentic,
performance-based
learning experiences

Meet the demand for
incoming workforce
equipped with 21st
century skills



Bridging the Gap



Building the Partnership



Building the Partnership

Strategic Plan
Aligned with
School Goals

Collaboratively
Address
Challenges

Integrated
Career Readiness
Programming

Sustainable
Structure



Building the Partnership



Building the Partnership



Start With:

- CTE Industry Councils
- Chamber of Commerce
- Industry Associations
- Working Parents
- Student Alumni

Building the Partnership

Highlight / Address:

- Value & Benefits for *ALL*
- School or District Expectations
- Relevancy & Impact
- Collaborative Opportunities
- Obstacles & Concerns



Reflection on Learning



Experis[®]
ManpowerGroup

Reflection on Learning



Next Steps & New Ideas



More Information

Natassia Rodriguez Ott, Ph.D.

Education Researcher

www.rti.org

nott@rti.org

Linda Brannan

Career Development Coordinator

www.wcpss.net/stemec

lhbranna@ncsu.edu

Todd Campbell

Education Consultant

www.rti.org

tbcampbell@rti.org

Michael Ray

Managing Director

www.experis.com

michael.ray@experis.com

An abstract graphic of a globe on the left side of the slide. The globe is composed of a dense network of thin, curved lines in various shades of blue, representing global connectivity or data flow. Some lines are thicker and more prominent, creating a sense of depth and movement. The lines intersect and curve around the globe's form, which is partially visible as a sphere.

delivering **the promise of science**
for global good

