

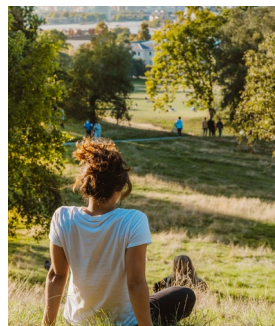
Achieve Your Local Opioid Response Goals

As a recipient of funding from the government and other sources, you are determining your community's **most pressing opioid issues** and how funds allocated for opioid-focused efforts can be used to benefit your constituents. These funds must be allocated toward **evidence-based approaches** appropriate for your community in efforts to reduce the negative burden of the opioid epidemic in the area. RTI can support your efforts in making a difference in your community.

How we can help

RTI International has been working with local, state, and federal entities for more than 50 years, and we understand the challenges you are facing in responding rapidly and accountably to the opioid epidemic. Our experts provide proven and innovative solutions as you deal with the challenges of a shifting landscape of the epidemic.

With us, you receive client-centered technical assistance and consulting on a full range of services—from planning to data system development, implementation, and evaluation. Specifically, we can help you with the following services:



Strategic Planning:
Use interactive planning processes to select evidence-based strategies, set milestones, outline measurable steps for success, and bolster surveillance for timely action.

Media Campaigns:
Design and evaluate media campaigns to reduce opioid use, improve disposal of prescription drugs, highlight community prevention strategies, and address the stigma related to opioid misuse.

Integrating Behavioral Health into Primary Care:
Expand identification of patients at risk for opioid use disorders (OUDs) and substance use disorders (SUDs).

Wastewater Testing:
Test wastewater for selected compounds, including different types of opioids and substances federally approved as medications for OUDs.

OUD Treatment:
Consult on best practices for incorporating medications for opioid use disorders (MOUDs) in combination with other therapies and recovery support, and provide support to incorporate telehealth and other avenues for enhanced access to services.

Workforce Development:
Identify workforce challenges, including developing a well-trained peer recovery support network.



Needs Assessments and Epidemiological Consultation:
Assess opioid burden in the area, conduct community-readiness and needs assessments, collect primary and secondary data (e.g., qualitative and quantitative data) from a variety of data sources, and conduct process and outcomes analyses.

Dissemination:
Develop user-friendly materials for stakeholders, design infographics and other compelling materials, create policy briefs, and summarize best practices for frontline providers as well as community leaders.

Opioid Policy Modeling:
Use mixed-methods approaches to simulate the effects of current or potential policies on the opioid crisis, generate predictive analytics, and evaluate the potential impact of different efforts to curb the opioid epidemic.

Programmatic Evaluation:
Assess program to understand how it is implemented, whether it is meeting its goals, and whether the efforts are having the intended impact. Consider effectiveness, efficiency, and areas for improvement.

Economic Evaluation:
Estimate the costs to develop or build new programs, identify the costs of providing services in a variety of settings, and understand the financing and sustainability of services.

Data Management and Reporting:
Integrate, provide technical assistance, and display results through mapping, data visualization, and data dashboards.

**Contact us
for more
information**

Edna Wallace
Strategic Account Executive
980.355.1279
ewallace@rti.org

RTI International is an independent scientific research institute dedicated to improving the human condition. Clients rely on us to answer questions that demand an objective and multidisciplinary approach—one that integrates expertise across the social and laboratory sciences, engineering, and international development. We believe in the promise of science, and we are inspired every day to deliver on that promise for the good of people, communities, and businesses around the world. For more information, visit www.rti.org.

RTI International is a registered trademark and a trade name of Research Triangle Institute. The RTI logo is a registered trademark of Research Triangle Institute.