



USAID
FROM THE AMERICAN PEOPLE

Climate Resilient Water, Sanitation, and Hygiene (CR WASH) Activity

Annual Program Statement



This document was produced for review by the United States Agency for International Development. The views expressed in this publication do not necessarily reflect the views of the United States Agency for International Development or the United States Government. If there are difficulties accessing this document, please contact accessibility@rti.org

**USAID Climate Resilient Water, Sanitation, and Hygiene
(CR WASH) Activity**

Annual Program Statement

Version I [Submitted March 2024]
Contract Number: 72066323F00002
RTI Project Number: 0218794
Activity Duration: August 25, 2023–August 23, 2028

Prepared for:

Faisal Hashi
Task Order Contracting Officer's Representative
and
Caraline DiNunzio
Task Order Contracting Officer

USAID/Ethiopia

US Embassy Addis Ababa Compound
P.O. Box 1014
Addis Ababa, Ethiopia
E-mail: fhashi@usaid.gov

Submitted by:

Mohamed Abdinoor
Chief of Party

On behalf of

RTI International

CR WASH Activity
Addis Ababa, Ethiopia
E-mail: mabdinoor@cr-wash.org

USAID Climate Resilient Water, Sanitation, and Hygiene (CR WASH) Activity

Annual Program Statement (APS)

Program:	USAID CR WASH Activity
Funding Opportunity:	01
Opportunity Number:	CR-WASH-APS-001/2024
Issuance Date:	01 April 2024
To download Full APS, Concept Paper Application form:	www.rti.org/rfp
Pre-Application Virtual Conference	Round 1- April 17, 2024, 11:00 A.M EAT Round 2 – July 17, 2024, 11:00 A.M EAT Round 3 – October 16, 2024, 11:00 A.M EAT
Pre-Application Virtual Meeting Link	ZOOM Meeting https://zoom.us/join Round 1- Meeting ID: 952 9807 9688 Passcode: 452193 Round 2- Meeting ID: 994 7959 7241 Passcode: 708878 Round 3 - Meeting ID: 975 1585 5452 Passcode: 499324
Closing dates for Submission of Concept Papers:	Round 1- April 30, 2024, 11:59 P.M EAT Round 2 – July 31, 2024, 11:59 P.M EAT Round 3 – October 31, 2024, 11:59 P.M EAT
Submit Questions by Email to:	grants@cr-wash.org
Closing Dates to receive Questions	Round 1- April 15, 2024, 11:59 P.M EAT Round 2 – July 15, 2024, 11:59 P.M EAT Round 3 – October 14, 2024, 11:59 P.M EAT
Responses to Questions to be posted at:	www.rti.org/rfp
Dates Responses are posted:	Round 1- April 22, 2024, 11:59 P.M EAT Round 2 – July 22, 2024, 11:59 P.M EAT Round 3 – October 21, 2024, 11:59 P.M EAT
Submit Concept Papers To:	grants@cr-wash.org
Application review due dates	The APS covers the period from the issue date until the closing date. The review of applications will be conducted through the three submission windows available during the year. Applicants are strongly encouraged to respond quickly.

SUMMARY

BACKGROUND

Lunched in August 2023 & operating in the four lowland regions of Ethiopia Afar (Zone I and 3), Oromia (Borena & East/West Harerge Zone), Somali (Fafen, Siti Zones), the USAID funded CR-WASH activity facilitates catalytic investments, piloting & scaling of innovative service & business models, strategic, partnership & stakeholder collaborations to achieve the following four objectives or intermediate results (IRs), (1) professionalized & expand quality climate resilient water services; (2) increase sustainable access to and use of sanitation & hygiene products and services, including for menstrual health and hygiene (MHH); (3) improving gender power dynamics, and (4) strengthen the enabling environment for climate resilient water and sanitation service (cross-cutting objectives). For more detail on CR-WASH activity objectives and geographical priorities, please see section I (Program Description) below. Activity. areas:

GRANT DESCRIPTION

This Annual Program Statement (APS) invites applications for grant funding to support implementation of the CR WASH Activity. The APS seeks to engage grantee partners from the private sector, universities, institutes, non-government organizations (NGOs), civil society organizations (CSOs), technical service providers and financial institutions such as micro-finance and banks. Grants will fall into three broad categories: (1) feasibility support (e.g., assessments, research, targeted studies); (2) catalytic (e.g., pilot activities, innovation promotion); and (3) scale-up (e.g., market development, system establishment, knowledge management). The initial grants under this APS are intended to support impactful activities and build local capacity; some illustrative activities are:

- **WASH and Water Resources Strategy, Studies, and Analyses:** water and conflict management studies; social and behavior change communications (SBCC); water basin/groundwater mapping with climate inputs; payment for ecosystem services analysis for watershed protection; community and/or multi-village water supply management; institutional, managerial, and technical gaps and solutions for WASH systems and facilities; lowland WASH provision policy review.
- **WASH Services and Products Innovation and Development:** private sector led operations and maintenance (O&M); distribution and installation of solar energy products, water pumps; MHH products development including sales, distribution, access; handwashing systems; WASH schemes asset management; WASH scheme functionality data collection, management, and analyses tools for decision-making.
- **Private Sector Viability Assessments, Studies, and Analyses:** private sector participation and market systems development including mapping of actors; customer preferences and segmentation; product development; market readiness (supply/demand, price points); organization and facilitation of marketplace and events such as multi-stakeholder platforms.
- **Financial Products and Services** for financial institutions including microfinance and banks for the development of micro-loans and products for sanitation, menstrual products, and water supply provision at the enterprise/NGO/CSO/women and youth groups, local saving and credit individuals' levels and at household levels.
- **Business Development Services:** for enterprises (especially women-led micro enterprises) and youth and girls in the WASH space including WASH Committees (WASHCOs).
- **Communication Products and Services** for organizing events, publications and products and services including SBCC tools and products; knowledge management; awareness creation for key international events for water and sanitation including International Women's Day, World Water Day, World Toilet Day amongst others.

- **Technical Training and Mentorships for Youth and Women and Other Stakeholders** in WASH system management (e.g., for WASHCOs, local government water bureaus and teams); renewable energy applications; WASH scheme O&M; organizational leadership and confidence building; literacy and numeracy skills; gender equity and women empowerment.
- **Micro grants for successful and promising** innovators, enterprises (Vocational and life skills training for women and girls), WASH Committees (WASHCOs), co-operatives and associations that have well-developed WASH-related products and services ready for scale up.
- **Women led networks, business associations, micro-enterprises** engaged in the WASH services provision, technical training and mentorships and skills development.

Applicants should have the requisite experience and capacity to implement tasks and activities in the noted geographic zones.

SELECTION PROCESS

The review and selection of successful applicants will follow a two-step process:

Step I - Concept review stage:

Initial review of concept papers to assess suitability of the application and relevance of the concept to the CR WASH’s objectives, approach, and thematic areas. Applicants must provide all required information in their application/concept. The concept should fit within the noted four CR WASH Activity IRs below (please see table I for details).

Table I

Reference	Activities
IR	Professionalize and expand quality climate-resilient water services
IR2	Increase sustainable access to and use of sanitation/hygiene products and services including MHH
IR3	Improve gender power dynamics
IR4	Strengthen the enabling environment for climate resilient water and sanitation services

Applicants whose concept papers are successfully evaluated in Step I will be invited to Step II of the process, to participate in the co-creation process.

Step II - Co-creation stage:

Successful applicants from Step I will participate in a co-creation exercise with CR-WASH team to develop concepts further concretize the ideas/concept, which if selected, and approved by USAID/Ethiopia, may result in a grant.

SECTION I: PROGRAM DESCRIPTION

The Ethiopian lowlands face a series of overlapping and severe challenges that have limited the availability of sustainable water and sanitation services, including prolonged droughts, flash floods, protracted conflict, and cholera outbreaks. Since 2018, the Government of Ethiopia (GoE) has implemented a climate-resilient WASH approach per its One WASH National Program (OWNP) Phase II, which requires climate resilience be mainstreamed across the sector.

In support of GoE commitments to the lowlands, the United States Agency for International Development Ethiopia (USAID/Ethiopia) has launched the five-year CR WASH Activity. Leveraging the implementation of the OWNP Phase II subprogram Development of Sustainable Water Supply, Sanitation, and Hygiene Program in Drought Prone Areas of Ethiopia, the CR WASH Activity will expand access to improved water supply and sanitation for targeted lowland areas of Afar; Oromia; South Ethiopia; and Somali Regions (see Figure 1). The Activity facilitates catalytic investments, piloting and scaling of innovative service and business models, strategic partnerships, and stakeholder collaborations to achieve the following four objectives or Intermediate Results (IRs):

- IR1: Professionalize and expand quality climate-resilient water services.
- IR2: Increase sustainable access to and use of sanitation and hygiene products and services, including for menstrual health and hygiene (MHH)
- IR3: Improve gender power dynamics.
- IR CC: Strengthen the enabling environment for climate-resilient water and sanitation services.

CR WASH aims to reach over 825,000 people with improved water and sanitation services, aligning with the GoE One WASH Strategy. In its implementation, CR WASH partners with the following key local organizations (Action for Development (AFD), Friendship Support Association (FSA), Rural Agency for Community Development and Assistance (RACIDA) and PRIN International).

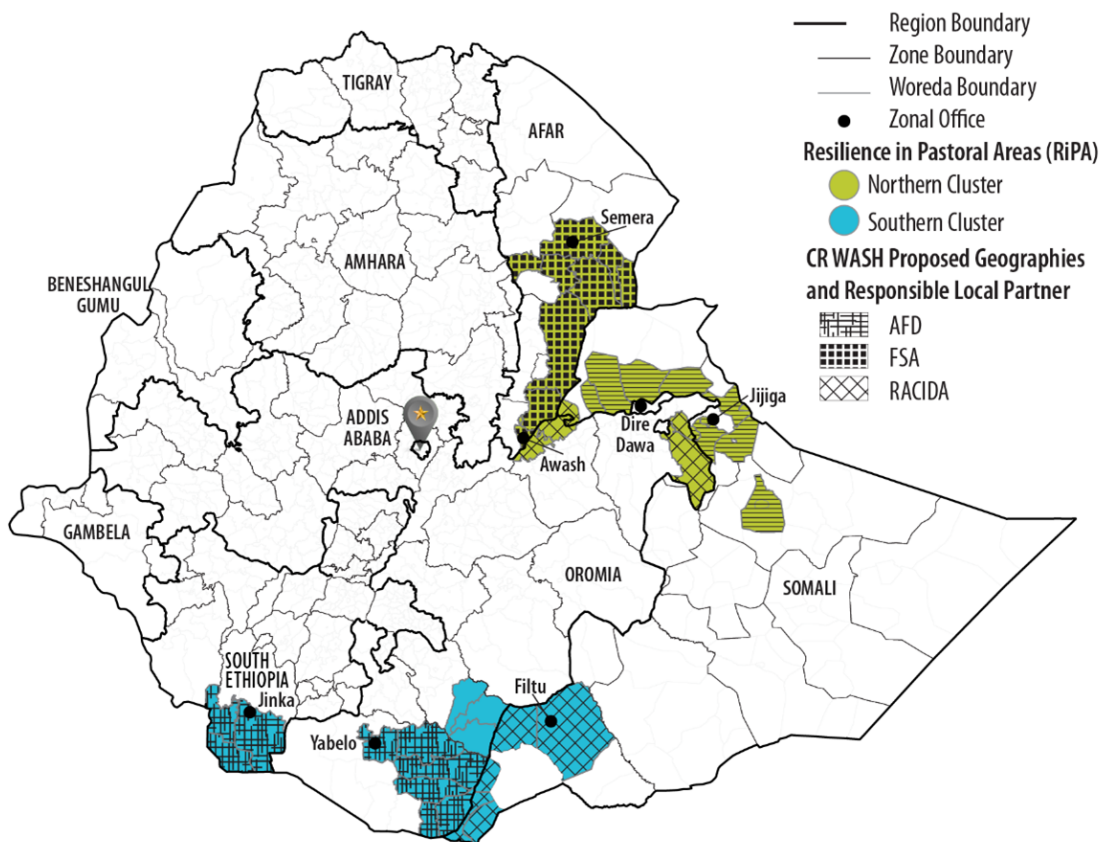


Figure I: USAID CR WASH Activity Locations

Specifically, the CR WASH Activity intends to co-design and carry out technical assistance as follows:

IR1: Professionalize and expand quality climate-resilient water services.

Expand access, service reliability, and management to climate resilient water services with focus on rural clusters

- Evaluate and strengthen technical and organizational capacities of WASHCOs, Water User Associations, youth/women groups/technicians, and networks through training, mentoring and internships to manage WASH schemes, carry out O&M and repairs and others.
- Assess and address capacity gaps of Regional Water and Energy Bureaus (RWEBs), Woreda Water Offices (WVOs), WASHCOs, rural utilities in reliable management of climate resilient WASH services via training, mentoring, coaching programs, and other innovative learning approaches.
- Conduct viable private sector participation options business development services, assessment, and analysis in WASH services via the mapping and assessment of key service providers, medium and small enterprises (MSMEs), financing institutions, and others including review of Public-Private Partnership (PPP) modalities in line with GoE framework, PPP O&M models to increase service reliability for rural utilities.
- Collaborate with financial institutions such as banks and microfinance to develop products and services for the WASH sector including microfinance and loans to MSMEs, service providers, retail networks etc.

Improve contingency planning, budgeting, and disaster risk reduction measures, including utilizing climate information services.

- Produce water basin maps with detailed climate risks and hazard levels in a pilot region.
- Assess capacity of service providers (WVOs) and develop capacity strengthening programs to prepare/implement disaster reduction response and business continuity and Climate-Resilient Water Safety Plans.

Strengthen sustainable water resources management including assessment of the potential for source water and watershed protection.

- Assess viability of payment for ecosystem services, water funds, or carbon offsets to support the conservation of source waters in the lowlands.
- Support groundwater mapping and assessment in selected woredas, including strengthening capacities of RWEBs and WVOs to do the mapping activities.

IR2: Increase sustainable access to and use of sanitation and hygiene products and services, including MHH.

Reduce open defecation and expand access to and use of at least basic sanitation products and services.

- Scale up modified CLTSH SBCC approach tailored to the lowlands including via training, SBCC and community engagements and use of smart subsidies.
- Conduct rapid formative assessment to understand barriers and opportunities in building and sustaining sanitation and hygiene progress and market systems in the lowlands.
- Conduct sanitation supply chain analysis, market system readiness, and customer segmentation in each region for sanitation products and services.
- Work with financial institutions to develop micro loans and products for sanitation and hygiene products and services.

Expand adoption of key hygiene behaviors, products, and services including MHH

- Do rapid review and update of the 2019 Lowland WASH MHM Assessment and Market Analysis to develop SBCC tools and approaches to reduce stigma and taboos related to menstruation and identify/activate market entry enablers for the private sector and key drivers for use of MHH products and services.
- Analyze the stigma and impact of lack of MHHs product for young girls in lowland schools.

- Update sanitation product prototypes and launch a design competition for innovation.
- Develop and launch ToT on innovative handwashing systems and safe water management.

IR3: Improve gender power dynamics.

Strengthen the confidence and self-efficacy of women and girls through strengthened gender dynamics.

- Refresh and/or develop curricula for women-only training for WASHCO members and women WASH professionals at woreda and regional levels.
- Facilitate adult education courses to build literacy and numeracy skills of WASHCO members.
- Improve girls and women access to services including financial products, services, training, and support on MHHs.

Expand WASH leadership opportunities and the vocational skills of women and girls through the facilitation of women empowerment to participate as leaders in communities, organizations, businesses, and institutions.

- Map and/or create professional spaces for women water professionals; female students in TVETs and university; and female boarding school students.
- Facilitate mentorship, internship, and scholarship programs for female students in TVETs, universities and boarding schools to share their experience and challenges in WASH leadership and management.
- Establish/strengthen women led and owned MSMEs; provide technical trainings and financial support for the MSMEs on repairs and O&M of water and solar systems, sanitation, MHM products and services.

IR CC: Strengthen the enabling environment for climate resilient water/sanitation services.

Improve WASH and climate data use and management.

- Review and update curricula for capacity building support on use of GEMS/Kobo toolbox for WASH service monitoring.
- Train WWOs on effective use of digital systems to capture upload and update WASH service Monitoring & Evaluation data.
- Develop low-cost innovative data capture and management approaches to build on existing regional databases.
- Strengthen WASH scheme asset management data collection and use.

Increase coherence between humanitarian, peacebuilding, and development WASH programming.

- Assess the causes of water conflicts and develop water conflict mitigation strategies.
- Conduct rapid review of GoE strategy and policy documents related to WASH service delivery in humanitarian response, peacebuilding, and long-term development.
- Draft and validate studies recommending steps to transition between humanitarian response, peace-building and long-term development WASH service.
- Evaluate capacity of Disaster Risk Management (DRM) steering committees at the regional, woreda and kebele levels for both immediate humanitarian response and long-term development efforts and develop/implement capacity strengthen plan and curricula for the DRM committees.

Accelerate needed policy reforms to reflect pastoralist context.

- Update and facilitate adoption of revised guidelines, policy documents and recommendations.
- Develop policy briefs, position papers, and white papers from experiences and evidence of CR WASH activities that reflect lowland priorities, and the interconnectedness of household, agriculture, and livestock needs in the face of a changing climate and corresponding risks related to water resources and WASH.

SECTION II: APPLICANT ELIGIBILITY

- Applicant must be registered and formally constituted with the GoE at the national or regional level (attach the business/or organization registration license/certificate and/or the TIN for legally registered business)
- Applicants may only submit one application per prime organization under this APS.
- Applicants must demonstrate presence or experience working in the Ethiopia lowland regions of Afar, Somali, Oromia and South Ethiopia.
- Not appear on the Specially Designated Nationals (SDN) and Blocked Persons List maintained by the U.S. Treasury for the Office of Foreign Assets Control, or “OFAC List.”
- Not appear in the System for Award Management (SAM) as ineligible to receive U.S. government funds.
- Not listed in the United Nations Security designation list.
- Be willing to sign and submit the required certifications before awarding the grant.
- For any grant award(s) resulting from this solicitation that is other than in-kind, equivalent to \$25,000 USD or more, grant recipients will be required to provide their Unique Entity Identifier (UEI). Although not required to be submitted with the APS application, however, successful applicants will be required to provide their UEI number before a grant award is issued. If the applicant already has a UEI number, it should be included in the application. Applicants are encouraged to obtain their UEI number through registration in SAM (<https://www.sam.gov>).
- Applicants must display sound management in the form of financial, administrative, and technical policies and procedures and present a system of internal controls that safeguard assets; protect against fraud, waste, and abuse; and support the achievement of program goals and objectives. CR WASH will assess this capability prior to awarding a grant.
- Any falsification of application information may result in rejection/cancellation of the award.
- Faith-based and community groups will receive equal opportunity for funding in accordance with the mandated guidelines laid out in ADS 303.3.28 except for faith-based organizations whose objectives are for discriminatory and religious purposes, and whose main objective of the grant is of a religious nature.

DISCLAIMER:

Issuance of this APS does not constitute an award commitment on behalf of the CR WASH Activity, RTI International, or USAID/Ethiopia, nor does it commit CR WASH to pay for costs incurred in the preparation and submission of an application. Furthermore, CR WASH reserves the right to reject any applications received. Similarly, an invitation to clarify your application is not a commitment to fund that application or to reimburse any costs incurred during the application's preparation.

A. PRE-AWARD RISK ASSESSMENT

All organizations selected for the award are subject to a pre-award risk assessment conducted by CR WASH, to ascertain whether the organization has the minimum management capabilities required to handle US government funds.

B. INELIGIBLE EXPENSES

The list below is illustrative and should be adapted to fit your project context as well as contractual requirements. This list should be consistent with the ineligible expenses in Section 7.3.2 of the GUC manual. CR WASH grant funds may not be utilized for the following:

- Ceremonies, parties, celebrations, or “representation” expenses.

- Purchases of restricted goods, such as: restricted agricultural commodities, motor vehicles including motorcycles, pharmaceuticals, medical equipment, contraceptive products, used equipment; without the previous approval of CR WASH, or prohibited goods, prohibited goods under USAID regulations; including but not limited to the following: abortion equipment and services, luxury goods, etc.
- Covered telecommunication and video surveillance equipment or services – per the standard provision entitled “Prohibition on Certain Telecommunication and Video Surveillance Services or Equipment”, grant funds including direct and indirect costs, cost share and program income may not be used to: (1) procure or obtain; (2) extend or renew a contract to procure or obtain; or (3) enter into a contract (or extend or renew a contract) to procure or obtain equipment, services, or systems that use covered telecommunications equipment or services (“CTES”) as a substantial or essential component of any system, or as critical technology as part of any system. This prohibition covers certain telecommunications equipment and services, including, but not limited to, phones, internet, video surveillance, and cloud servers, produced or provided by Huawei Technologies Company, ZTE Corporation, Hytera Communications Corporation, Hangzhou Hikvision Digital Technology Company, or Dahua Technology Company (or any subsidiary or affiliate of such entities) unless CR-WASH has determined that there is no available alternate eligible source for the CTES. For fixed amount awards, this restriction is only applicable if any of the milestones are for telecommunication or video surveillance services or equipment.
- Alcoholic beverages.
- Any purchase or activity which has already been made.
- Purchases or activities unnecessary to accomplish grant purposes as determined by the CR WASH Activity.
- Prior obligations of and/or, debts, fines, and penalties imposed on the Grantee.

C. SUBMISSION INFORMATION

Concept papers shall be submitted in English and may not exceed five pages. Focus: the five-page limits encourage the applicants to clearly articulate the core idea of their concept. Review efficiency: reviewers easily grasp the concept’s merit within a limited timeframe, letting them evaluate many concept notes.

Concept papers should be submitted electronically to the CR WASH to grants@cr-wash.org and should reference APS No. CR-WASH-APS-001/2024. This is an open APS and applications received within the period will be evaluated as follows.

Round 1- April 30, 2024, 11:59 P.M EAT

Round 2 – July 31, 2024, 11:59 P.M EAT

Round 3 – October 31, 2024, 11:59 P.M EAT

Any application received after the closing date for each round will be considered in the following round.

Note: Applicants to submit one concept based on their core business area, capacity, and experience.

III. APPLICATION MERIT REVIEW/EVALUATION CRITERIA

Applications will be evaluated against the evaluation criteria outlined in the table below:

COMPONENT	EVALUATION CRITERIA	SCORE
<p>Technical Approach</p>	<p>Criteria 1: Methodology (Points: 15)</p> <ul style="list-style-type: none"> • Does the proposal describe a clear and logical step-by-step process for implementing the WASH activities? (Points allocated: 10) • Are the methods described consistent with best practices and/or evidence-based approaches in the WASH sector, approach in monitoring and evaluation mechanism? (Points allocated: 5) <p>Criteria 2: Alignment with USAID CR WASH Activity Results and Impacts (Points: 15)</p> <ul style="list-style-type: none"> • Does the proposal clearly explain how the technical approach will contribute to achieving the stated objectives and IRs of the CR WASH Activity? (Points allocated: 5) • Does the approach address the specific need and challenge identified in the WASH activity documents (Points allocated: 5) • Alignment in CR WASH geographic woredas and presence (5) <p>Criteria 3: Innovation (Points: 5)</p> <ul style="list-style-type: none"> • Does the proposal include any innovative ideas or approaches to improve WASH service delivery? (Points allocated: 3) • Are the proposed innovations clearly explained and feasible to implement within the project scope? (Points allocated: 2) 	<p>35</p>
<p>Implementation and Delivery Plan</p>	<p>Criteria 1: Delivery and Implementation Plan (Points: 10)</p> <ul style="list-style-type: none"> • Clarity and comprehensiveness of the plan (Points allocated: 3) • Feasibility and logic of the proposed approach (Points allocated: 3) • Realistic and achievable schedule for project completion (Points allocated: 2) • Clear milestones and deliverables (Points allocated: 2) <p>Criteria 2: Key Staffing Plan (Points: 10)</p> <ul style="list-style-type: none"> • Roles and Responsibilities, clearly defined roles for key personnel and alignment of roles with project activities (Points allocated: 5) 	<p>20</p>

COMPONENT	EVALUATION CRITERIA	SCORE
	<ul style="list-style-type: none"> Relevant experience and expertise of key personnel and demonstrated success in managing similar projects (Points allocated: 5) 	
Past Performance and Capacity	<p>Criteria 1: Technical Skills & Expertise (Points: 5)</p> <ul style="list-style-type: none"> Expertise in areas like project management, monitoring and evaluation, or specific technical skills relevant to the intervention itself. (Points allocated: 2.5) Demonstrated experience of the team members and evaluated the qualifications and experience of the proposed team members. Consider factors such as relevant educational background, professional certifications, and prior experience in similar projects. (Points allocated: 2.5) <p>Criteria 2: Previous Experience in Proposed Intervention Points: 5)</p> <ul style="list-style-type: none"> Direct experience with similar activities (Points allocated: 2.5): Assess if the applicant has demonstrably implemented similar activities in the past. This includes considering the nature of the intervention, the grant size they managed in the target population, and achieved outcomes. Success rate in past projects (Points allocated: 2.5): Evaluate the applicant's track record of success in implementing past projects. Consider factors like project completion rates, adherence to budgets and timelines, and achievement of stated goals. <p>Criteria 3: Evidence Requested (Points: 5)</p> <ul style="list-style-type: none"> Evidence of implementation of similar activity detailing, Nature of the activity, Funding agency and reference? (Points allocated: 2.5) Brochures of the organization or website link showcasing past projects (Points allocated: 2.5) 	<p>15</p>
Gender and Social Inclusion	<p>Criteria 1: Gender Inclusion (Points: 13)</p> <ul style="list-style-type: none"> Clear targets for women's participation (e.g., percentage of women participants, leadership positions held by women). (Points allocated: 5) Activities specifically designed to address the needs and interests of women (e.g., workshops on women's empowerment, skills training for female entrepreneurs). (Points allocated: 5) Strategies to overcome barriers to women's participation (e.g., childcare services, transportation assistance, culturally appropriate outreach). (Points allocated: 3) 	<p>20</p>

COMPONENT	EVALUATION CRITERIA	SCORE
	<p>Criteria 2: Youth Inclusion and marginalized group (Points: 7):</p> <ul style="list-style-type: none"> • Clear targets for youth participation (e.g., percentage of youth participants, youth representatives on advisory committees). (Points allocated: 2.5) • Identification of relevant marginalized groups in the target area (Points allocated: 2.5) • Strategies to reach out to and engage marginalized groups (e.g., partnerships with local organizations, culturally sensitive outreach materials). (Points allocated: 1) • Activities designed to address the specific needs and challenges of marginalized groups (e.g., disability-inclusive training, programs promoting social inclusion). (Points allocated: 1) 	
<p>Extent of Contribution to USAID CR WASH Activity objectives per IRs and Targets and Deliverables</p>	<p>The extent to which proposed activities will contribute to the communities in the USAID CR WASH focal zones by achieving of any of the following performance indicators:</p> <ol style="list-style-type: none"> a) Extent the applicant technical proposal aligns and contributes to the CR WASH objectives, targets, and results (5) b) How will the results/targets be monitored, reported and lessons learned incorporated during project implementation. Point allotted (5) <p>Illustrative CR WASH indicators for reference</p> <p>Number of households or communities with new and improved water or sanitation services to be targeted and reached.</p> <p>Number of new MSMEs or Micro enterprises to be reached/or assisted.</p> <ul style="list-style-type: none"> • Number of women or youth engaged or supported. • Value of additional investments to be leveraged by the intervention (these include new loans disbursed, new investments made by implementing companies, or microfinance/remittances, etc) • For analysis/reports: explain how the studies/analysis will contribute to the CR WASH objectives and results 	10
Total Marks		100

These merit review criteria elements are described more fully below.

TECHNICAL APPROACH (35%)

The technical approach must directly contribute to the achievement of the CR WASH Activity's expected results and performance under the activity must be measurable under one or more of the CR WASH program indicators for regulatory reform, streamlined business processes, workforce development, or financial sector strengthening. Evaluation of approaches may either include approaches proven to be effective or new untried approaches with promise. Proposed mechanisms for monitoring and evaluation with objectively measurable indicators will also be appraised.

IMPLEMENTATION AND DELIVERY PLAN (20%)

Demonstrated delivery and implementation plan including key staffing plan (qualifications of key personnel to deliver the grant); cost effectiveness; and timeliness.

PAST PERFORMANCE AND CAPACITY TO IMPLEMENT THE GRANT (15%)

Evidence of the capability to undertake and accomplish the proposed activities and positively strengthen the environment for trade and investment. The application should demonstrate the organization's effectiveness in terms of internal structure, technical capacity, and key personnel, in meeting economic development goals. In addition, the organization must demonstrate adequate financial management capability. The evaluation will be based principally on the background, qualifications, reputation, appropriateness, and skills of its key personnel; and the "track record," reputation, and achievements (including development of self-sufficient, sustainable activities) of the organization.

GENDER AND SOCIAL INCLUSION (20%)

The extent to which the proposed activity includes a gender component or represents a strong commitment to women as beneficiaries.

Based on the ADS 303.3.6.2.c., Gender Issues, it is a best practice to integrate gender issues into the solicitation when applicable. Note that gender awareness may be a stand-alone criterion or can instead be integrated as appropriate to other criteria. For example:

- Feasibility of design and technical approach – Whether gender issues are appropriately integrated into the feasibility of the design and technical approach.
- Impact on target group – If the target group includes women, men, youth, etc. this should be included as part of the criteria.
- Past Performance – If gender is a key part of past performance, it can be integrated here.

CONTRIBUTION TO CR WASH OBJECTIVES PER INTERMEDIATE RESULTS (10%)

The extent to which the proposed activities contribute to USAID CR WASH Activity objectives per Intermediate Results (IRs). Review concept and proposed activities and plans to assess how they contribute to the communities in the USAID CR WASH focal zones by achieving of any of the following performance indicators:

- Number of households or communities with new and improved water or sanitation services
- Number of new MSMEs or Micro enterprises to be reached/or assisted.
- Number of women or youth engaged or supported.
- Value of additional investments to be leveraged by the intervention (these include new loans disbursed, new investments made by implementing companies, or microfinance/remittances, etc).

FINANCIAL PROPOSAL – NOT REQUIRED

A budget is not required for this APS. However, applicants must provide a summary of the total activity budget. Successfully evaluated APS applicants, if invited to Step 2, which is the co-creation stage, they will be required to submit a detailed budget and narrative.

ROLLING PRE-APPLICATION CONFERENCES/PUBLIC DISCUSSIONS

During the APS publication period, CR WASH will hold pre-application virtual conferences for each round to answer questions from potential applicants and provide an overview of the overall grant process from concept to award. Applicants should submit questions beforehand through the email provided (grants@cr-wash.org) to ensure responses are provided during the meeting. Both questions and answers will be posted at www.rti.org/rfp and publicized so that applicants have access to the information throughout the process.

A meeting link is provided on the cover page for applicants to log in and attend the virtual meeting. CR WASH will not respond to questions or inquiries made by telephone.

IV. AWARD AND ADMINISTRATION INFORMATION

All grants will be negotiated, denominated, and funded in local Ethiopian Birr currency. Grant agreements will be awarded and implemented in accordance with applicable USAID administrative requirements for grants, US Government regulations, and CR WASH Grants Under Contract Manual.

ANNEX A. APS RESPONSE FORM

1. APS Number	CR-WASH-APS-001/2024	
2. Application Reference number	Leave it Blank	
3. UEI number	If not available leave blank	
4. Date Response Submitted		
5. Name of Organization		
6. Organization Representative Contact Information	Name	
	Email	
	Mobile number	
7. Address Location		
8. Organization Website (if available)		
9. Registration Type¹		
10. Year of registration		
11. Name of Authorized Official and Title.		
12. Project Title		
13. Type of Organization (Check <u>all</u> that apply)		
14. USAID CR WASH Support Requested	USD	
	ETB	
13. Applicant contribution	USD	
	ETB	
15. Total Project Cost	USD	
	ETB	

¹ Attach certificate of registration both Federal and State

APPLICATION FORM

A. Organization/Company background – Max 1 page

Describe your organization/company (you may attach an organization or company profile if available). Provide a profile of the organization that should include a brief description of the organization, its legal authorized business activities, number of years in operation, ownership, and types of activities undertaken in the past.

B. Methodology and Technical approach - Max 4 pages

Describe how the proposed intervention is in line with USAID CR WASH Activity objectives, demonstrating effectiveness, efficiency, viability (realistic), and any innovation to deliver the approach and deliverables and timelines for the achieving results and impacts.

C. Management and Implementation Delivery Plan – Max 2 pages

Describe the overall management approach towards planning and implementation of proposed activities including an organizational chart describing the relationship of the key positions proposed for this activity. Describe the project team, CVs, financial capacity, audit, etc.

D. Past Performance - Max 1 page

Indicate recent project experience, preferably in private sector/donor funded projects implemented in the last four years.

--

E. Inclusion of women and youth – Max 1 page

Describe how the proposed activities will engage women and youth for long-lasting impact and engagement.

--

F. Extent of Contribution to USAID CR WASH Activity objectives per IRs – Max 1 page

Describe how your company/organization plans to contribute to the communities in the USAID CR WASH focal zones by achieving any of the following performance indicators (include projected figures where possible):

- Number of households or communities with new and improved water or sanitation services
- Number of new MSMEs or Micro enterprises to be reached/or assisted.
- Number of women or youth engaged or supported.
- Value of additional investments to be leveraged by the intervention (these include new loans disbursed, new investments made by implementing companies, or microfinance/remittances, etc)



USAID
FROM THE AMERICAN PEOPLE

U.S. Agency for International Development
1300 Pennsylvania Avenue, NW
Washington, DC 20523
Tel: (202) 712-0000
Fax: (202) 216-3524
www.usaid.gov