

# PIRE: Air Quality and Health

2020 Internship Showcase

Ivana Ashraf

NC State

[internships@rti.org](mailto:internships@rti.org)





# In a Remote Internship World

## Pros

- Gained valuable experience in the industry
- Easier to get to work on time
- Able to connect with an amazing team

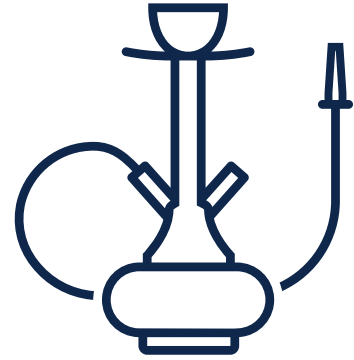
## Cons

- Could not work in the lab for hands-on experience
- Harder to connect with other interns and supervisors



## E-Cigarette or Vaping Use-Related Lung Injury (EVALI)

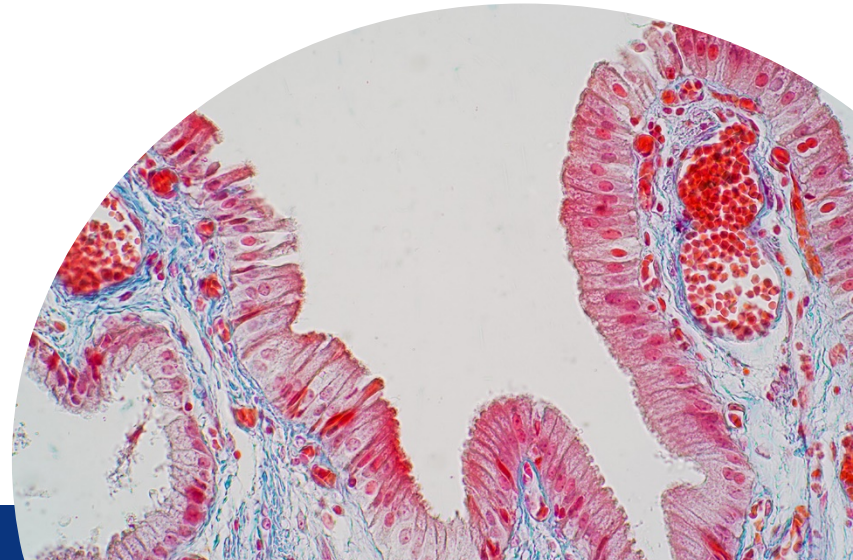
- Importance: Further research will be conducted to determine the effects of e-liquids containing Vitamin E on the human body.
- Impact: Providing empirical data to determine whether the e-liquids containing Vitamin E are harmful to the body.





## What Did We Do?

- Bronchial epithelial cells were exposed to vapors using a CellTox Sampler.
- LDH, ELISA, and TEER assays were conducted on samples exposed to PGVG and Vitamin E.
- Tests were run at 20W and 50W.





## Results

- Liquid and power were significant factors for toxicity.
- Vitamin E with higher power induced higher toxicity (50W as opposed to 20W).
- A few outliers in the data need to be further analyzed.



# Acknowledgments

6

Dr.  
Jonathan  
Thornburg

Dr. Jean  
Kim

Dr. Seung-  
Hyun Cho

Erin  
Dowell

# Image Sources

- **Getty Image**

<https://www.gettyimages.com/detail/photo/simple-columnar-epithelium-is-a-columnar-epithelium-royalty-free-image/985358918>



# Thank you

Contact: Ivana Ashraf | email: [internships@rti.org](mailto:internships@rti.org)