

turning knowledge into practice

Dynamics of Children's Enrollment in Public Health Insurance: A Three-State Comparison

Presented by

Susan G. Haber, Sc.D., RTI International

Andrew Allison, Ph.D., Kansas Health Institute

Elizabeth Shenkman, Ph.D., University of Florida

Presented at

Twenty-Seventh Annual APPAM Research Conference

Washington, DC

November 5, 2006



411 Waverley Oaks Road ■ Suite 330 ■ Waltham, MA 02452-8414

Background

- Previous studies have shown that many children receive only episodic coverage through SCHIP and Medicaid but they have not looked at enrollment in public health insurance (PHI) more broadly
- Study questions
 - How long do children remain enrolled in PHI?
 - Do children who disenroll from PHI re-enroll later?
 - Do children transition between eligibility categories?
 - Do patterns vary across states and eligibility groups?

Characteristics of PHI Coverage for Children

	<u>Kansas</u>	<u>Oregon</u>	<u>Texas</u>
SCHIP Program Type	Free-standing	Medicaid look-alike	Free-standing
SCHIP Income Limit (% FPL)	200%	170%	200%
SCHIP Premiums	Yes (above 150% FPL)	No	Yes (above 150% FPL)
Recertification			
-SCHIP	12 months	6 months	12 months
-Poverty-level Medicaid (PLM)	12 months	6 months	6 months
-TANF	12 months	Variable	6 months

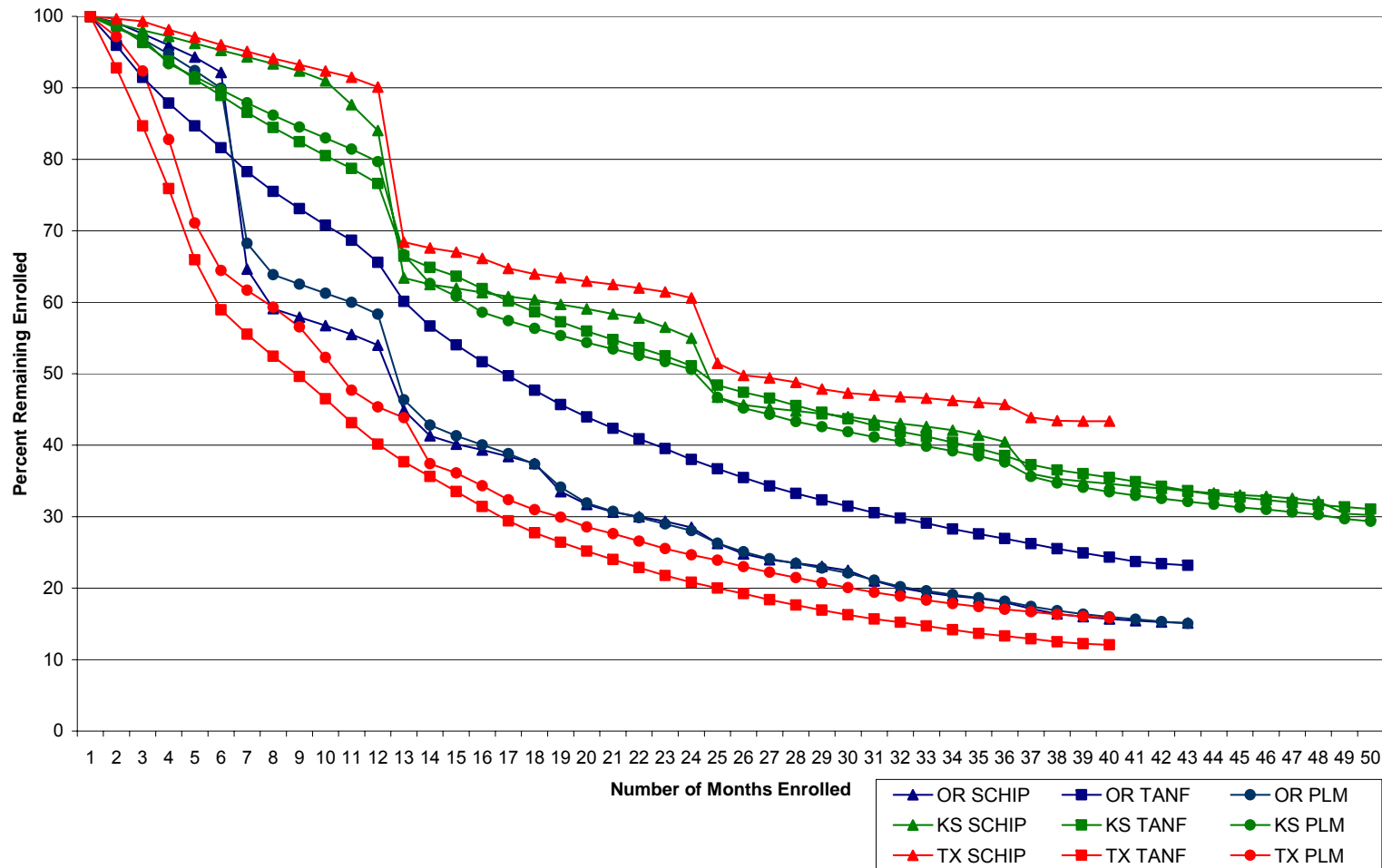
Study Population

- All children with some period of eligibility in SCHIP, PLM, or TANF since the beginning of the state's SCHIP program
 - Texas limited to selected (primarily urban) areas
- Study period
 - Kansas: January 1999 - February 2003
 - Oregon: July 1998 - January 2002
 - Texas: May 2000 – August 2003

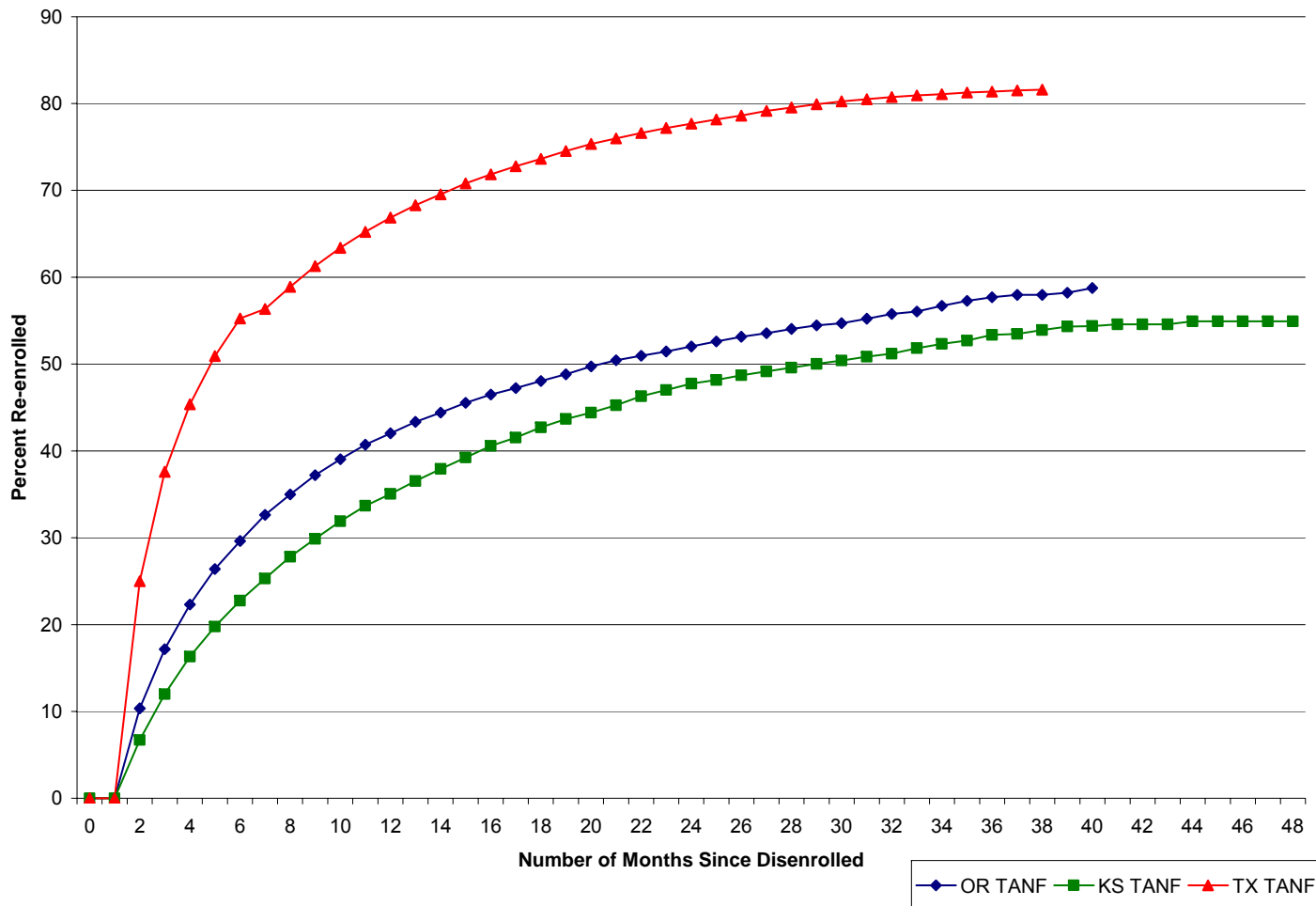
Data

- Linked administrative eligibility data for SCHIP and Medicaid in Kansas, Oregon, and Texas
- Constructed record of monthly enrollment in any type of PHI for each child in the study population
- Two month break in eligibility considered a disenrollment
- Analyses focus on first spell of eligibility beginning during study period
- Child classified as SCHIP, PLM or TANF based on eligibility category at beginning of spell

Percent of Children Remaining Enrolled in PHI



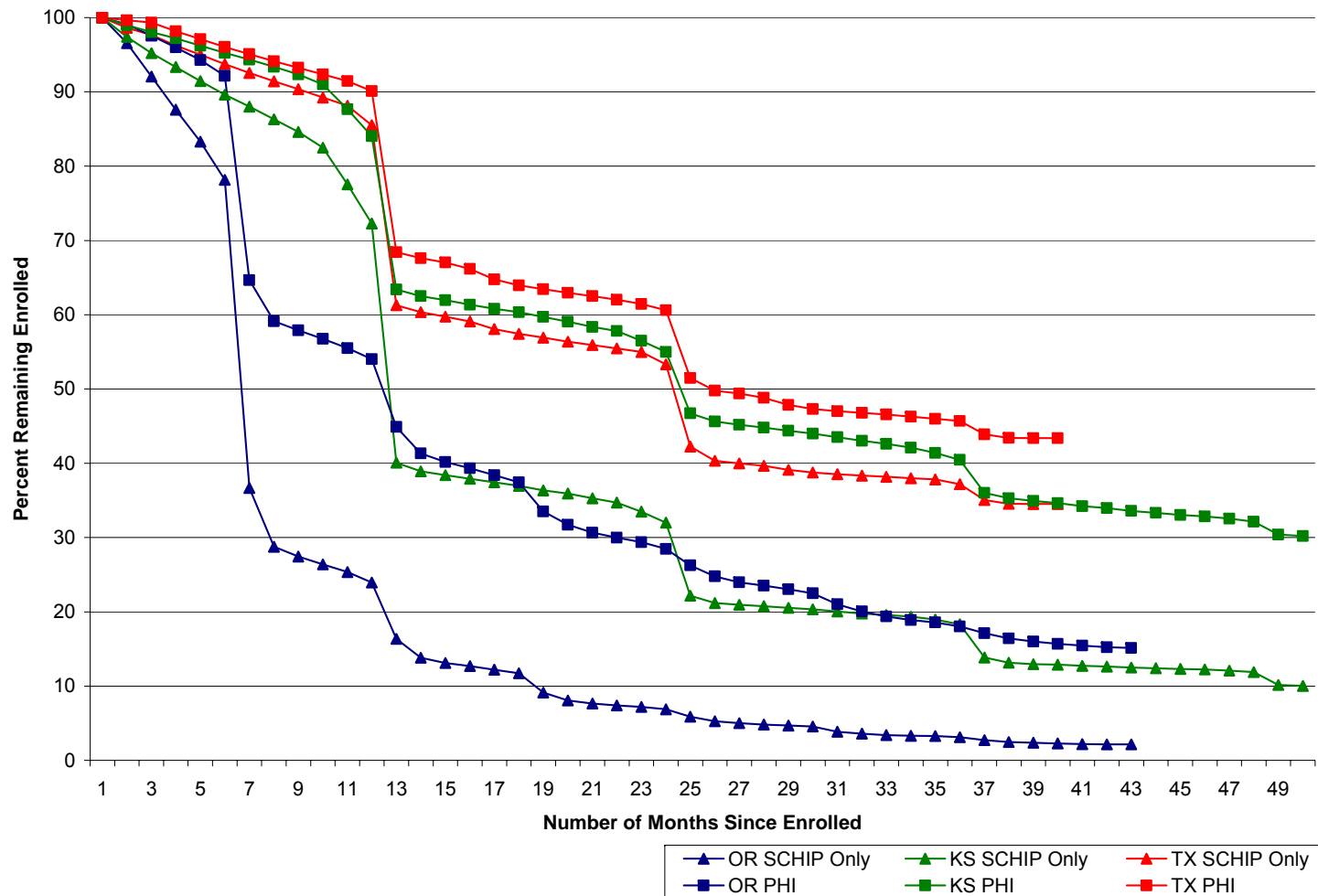
Percent of TANF Children Re-enrolling in PHI



Next Eligibility Category for Returning Disenrollees

	<u>SCHIP</u>	<u>TANF</u>	<u>PLM</u>	<u>Other Medicaid</u>
<u>Kansas</u>				
SCHIP	48	9	40	3
TANF	10	35	52	3
PLM	18	21	58	3
<u>Oregon</u>				
SCHIP	37	10	50	3
TANF	8	37	51	4
PLM	13	15	68	4
<u>Texas</u>				
SCHIP	51	3	47	<1
TANF	4	47	47	3
PLM	12	10	77	1

Percent of SCHIP Children Remaining Enrolled: SCHIP Only vs. PHI



Conclusions

- Continuity of coverage varies across states and eligibility categories
 - May be due to differences in administrative procedures
 - Need further analysis to understand implications for continuity of care
- Medicaid and SCHIP are complementary programs
 - Many children move between PHI eligibility categories
 - Need to design policies to coordinate application processes and service delivery as children move between programs