



GIS for Health Research

RTI International applies the power of geospatial science and technology to help our clients achieve their public health research goals.

GIS Applications in Health, Survey Research, and Economics

RTI provides a full range of geographic information system (GIS) services to support public health, healthcare economics, and epidemiological research.

Cartographic Modeling

Our staff members have used cartographic modeling techniques to model medical service markets, risk factors for disease, and other health outcomes to support informed decision making. We also develop applications using demographic and statistical models in a GIS environment to model surfaces and computer variables for statistical analyses.

Exposure and Human Health Risk Assessment

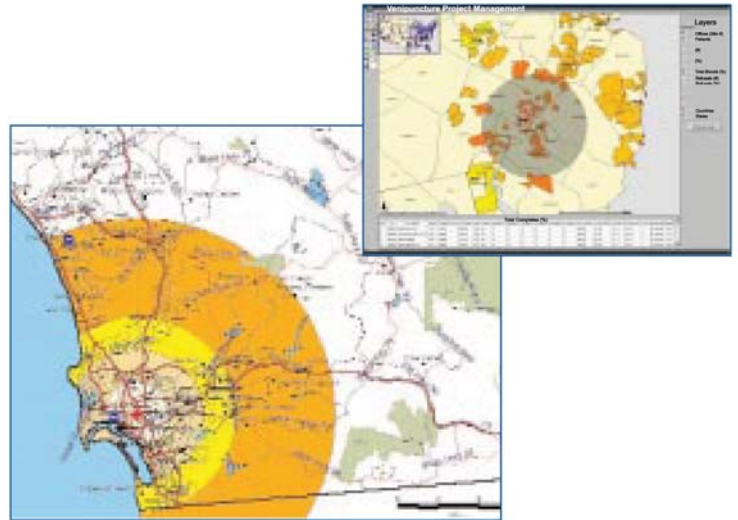
We are experienced in developing risk models to estimate human population health risks and have worked with the U.S. Environmental Protection Agency to develop GIS databases and tools for human health risk assessment. We also model the potential for exposure to environmental contaminants using GIS methods.

Data Management and QA

RTI manages and maintains large nationwide geodatabases of demographic, health, and environmental information, thereby reducing the costs and increasing the efficiency of building individual project databases. Because we deal with wide-ranging geospatial databases, we have experience in assessing and correcting data quality problems of secondary data and in proper QA/QC procedures to ensure that primary geospatial data are handled correctly.

Mapping

Mapping is the cornerstone in communicating geographic information. Our application experience in the health/GIS field includes mapping disease incidence and mortality rates. We are also leaders in the field of survey mapping, generating tens of thousands of detailed maps in support of field interview-based survey data collection. We have produced a number of atlases that comprehensively communicate the data, analyses, and results of many projects.



Internet Delivery and Applications Development

RTI's GIS capabilities include development of custom desktop and Internet map server applications. We use a wide range of application development tools to create desktop and web-based GIS applications to meet specific client requirements. We have experience in developing interactive, web-based mapping sites to promote project management and locational data collection.

RTI's GIS Resources

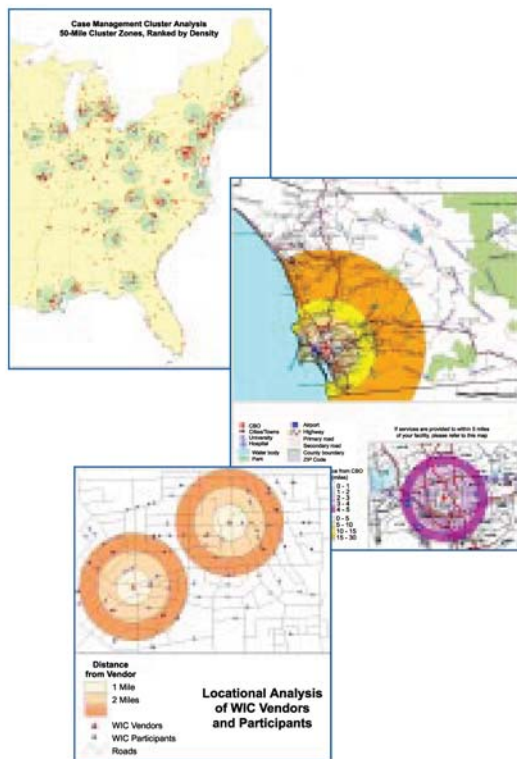
RTI has an extensive UNIX and Windows 2000 client-server network running the latest application development production GIS tools. Our GIS software includes ArcGIS, ArcView, ArcIMS, ArcSDE, and Oracle Spatial. Development languages and tools include Visual Basic, Java, Avenue, AML, ASP, and ArcObjects.

RTI has applied GIS technology and spatial analysis to cutting-edge research since 1986. Our GIS professionals have an unusual depth of experience in the relatively new field of geographic information technologies. Our project managers and senior analysts average more than 10 years in the field, with experience in private industry, government, and scientific research.

(continued)



GIS for Health Research *(continued)*



Scientific Collaboration

Our GIS team collaborates with RTI research scientists who have experience in more than 130 disciplines, including epidemiology, health and social policy, international health and development, survey and statistics, and environmental health. These teams capitalize on the combined power of health science and geographic science to provide outstanding value to our clients.

For more information about GIS for health research, contact

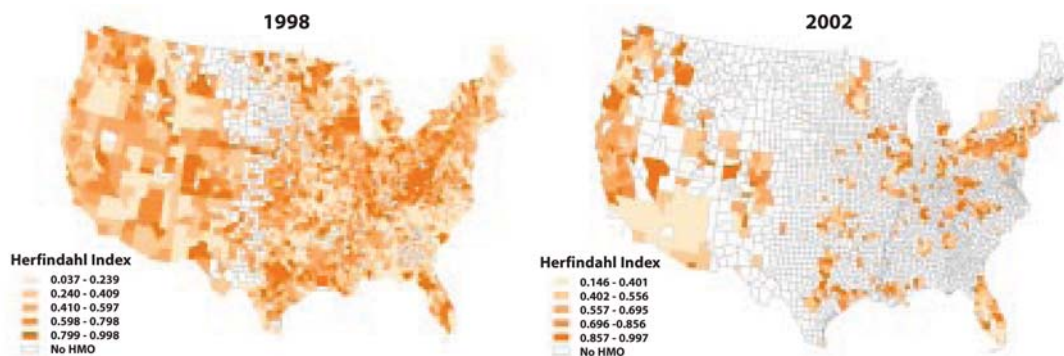
Bill Wheaton
 Environmental, Health, and Safety Division
 PHONE: 919.541.6158
 E-MAIL: wdw@rti.org

Stephen V. Pereira
 International Development Group
 PHONE: 919.541.6078
 E-MAIL: svp@rti.org

RTI International
 3040 Cornwallis Road, PO Box 12194
 Research Triangle Park, NC 27709-2194 USA

RTI-5455 1/2008

Reduction in Choice for the Elderly: Increased Concentration of Medicare Managed Care Enrollees in Medicare HMO Plans



RTI Medicare policy researchers use GIS to analyze the impact of policy changes on access to Medicare services for the elderly.

All brand names and product names used in this brochure are trademarks, registered trademarks, or trade names of their respective holders. ArcGIS, ArcView, ArcIMS, ArcSDE, ArcObjects, AML, and Avenue are trademarks, registered trademarks, or service marks of ESRI. Oracle Spatial is a registered trademark of Oracle Corporation. Visual Basic is a trademark of Microsoft Corporation. Java is a trademark of Sun Microsystems. ASP is a trademark of Microsoft.



RTI International is one of the world's leading research institutes, dedicated to improving the human condition by turning knowledge into practice. With projects in more than 40 countries and a staff of more than 2,600, RTI offers innovative research and technical solutions to governments and businesses worldwide in the areas of health and pharmaceuticals, education and training, surveys and statistics, advanced technology, democratic governance, economic and social development, energy, and the environment. For more information, visit www.rti.org.

RTI International is a trade name of Research Triangle Institute.